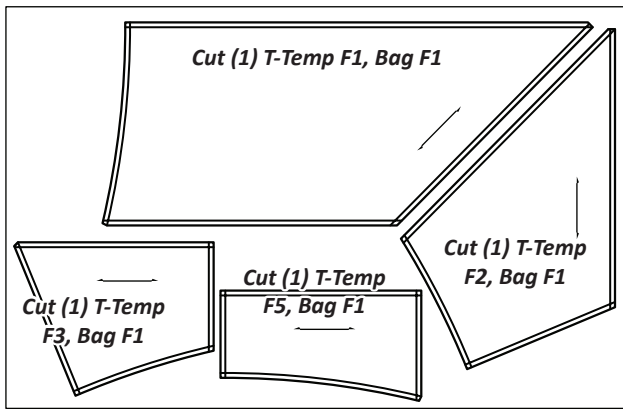
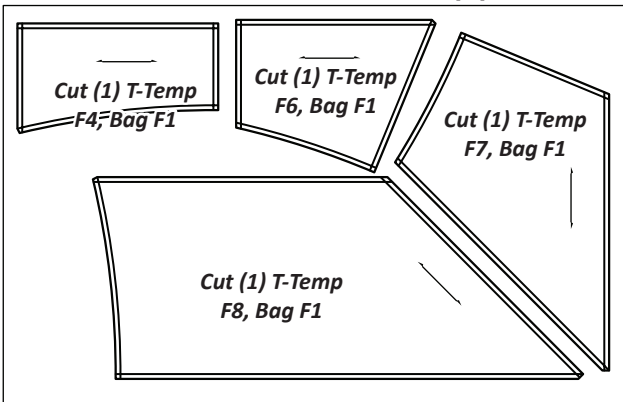


► (1) TP 340



► (1) TP 341



► **Border Fabric Information:**

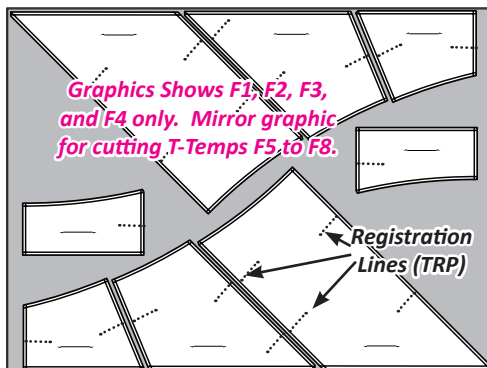
The table below includes yardage and a fabric number for the Congo Border T-Templates. Paste a swatch of your chosen fabric in the box in the Assigned Colors column!

| T-Temps F1 to F8: Make (4) of Each  |                       |                |
|-------------------------------------|-----------------------|----------------|
| GROUP-F FABRIC #                    | YARDAGE INCH          | ASSIGNED COLOR |
| Fabric F1<br>(T-Templates F1 to F8) | 3-5/8 yd<br>or (126") | FABRIC SWATCH  |

**CUTTING INSTRUCTIONS**

**Step 1:** Cut (4) 31-1/2" x 42" strips of fabric and stack them *right-side-up*.

**Step 2:** Position the *T-Templates F1, F2, F3, and F4* onto (2) pieces of fabric stacked as shown to the right. Use a Ruler and rotary cutter to carefully cut around each T-Template.

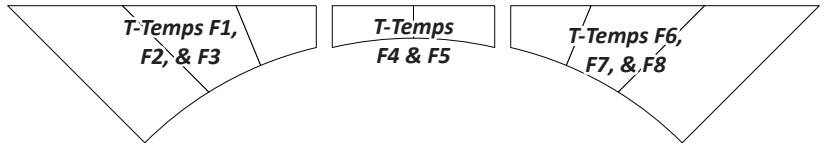


**Step 3:** For *T-Templates F5, F6, F7, and F8*, mirror the above graphic, placing the T-Templates *right-side-up* on the *right-side* of the remaining (2) pieces of fabric (graphic not shown).

**Step 4:** The T-Templates have registration lines (marked as dotted lines with a TRP as shown in the graphic above). Unthread your machine and sew through the paper and the stack of fabrics with just the needle, marking the registration lines on each fabric.

**Step 5:** Re-thread the machine, and set the stitch length = 2.8 or greater. Sew on the lines marked by the needle-punching. Trim the threads, clip the fabric pieces to the appropriate template.

**Step 6:** Sew (4) groups of the following, then place all the border pieces back into Bag #F1. Match the TRP lines, then remove the basting stitches when the seams are sewn.



**QUILT ASSEMBLY**

**NOTE - Machine Settings:** Set your machine to sew a quarter-inch seam allowance before you begin the quilt assembly and curved piecing.

Reference LP 019 and LP 020, which are newsprints included in this Booklet. These newsprint sheets include all of the assembly graphics (showing the front-side of the quilt). We have placed them on the larger sheets so the graphics are bigger, we can show the entire quilt, and also so you can pin these to a design wall or lie them out near your machine to reference them as you sew.

**Step 1:** Remove all of the units from each of the Group A to F Bags and arrange them on a design wall as shown in Illustration 1 on LP 019. Remove any remaining papers from the back. Refer to the general instructions for information on how to remove the papers if you need some assistance.

**Step 2: Group DR to Group C:** Sew *Group DR (Right Group D)* to the left edge of Group C. Press the seams as shown by the arrows in Illustration 2 on LP 019.

**Step 3: Group DL to Group C:** Sew *Group DL* to the right edge of Group C. Press the seams as shown by the arrows in Illustration 3 on LP 019.

**Step 4: Group BR to Group C:** Sew *Group BR* to the left edge of Group C. Press the seams as shown by the arrows in Illustration 4 on LP 019.

**Step 5: Group BL to Group C:** Sew *Group BL* to the right edge of Group C. Press the seams as shown by the arrows in Illustration 5 on LP 019.

**Step 6: Group E to Groups BR/BL:** Review Step 6. Find the (4) Group C/DR/DL/BR/BL pieces that sit in the corners of the quilt. Sew a Group E onto one side (Group BR) and another Group E onto the other side (Group BL). Press the seams towards Group E as shown by the arrows in Illustration 6, LP 019.

**Step 7: Group A to Group BR:** Sew (4) Group A to the top, bottom, right and left Group C/DR/DL/BR/BL pieces. Sew Group A along the angled edge of Group BR. Press the seams toward Group A as shown in Illustration 7, LP 020.

**Step 8: Group A to Group B Y-Seam:** Reference Illustration 8. A Second Group A is sewn to the same group