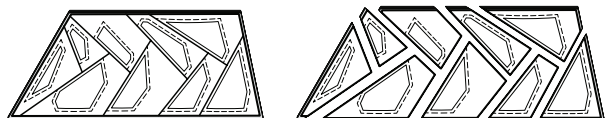


Step 5: Re-stack the sub-cut pieces *right-side-up* beneath the TLS, then slice through the paper and fabric following the Cut Lines in numerical order on the layout sheet.

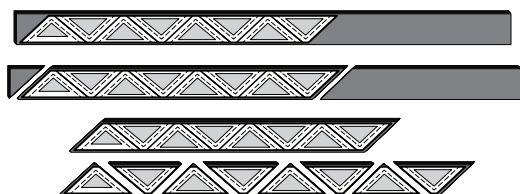


Step 6: Clip the Sec. Template and pieces beneath together and place into Bag #DR.

Accent Fabrics D3 to D10: Cut and stack (8) 2-1/2" by 42" strips facing *right-side-up*.



Step 1: Position (1) *Unit DR & DL Accent Template Layout Sheet* onto the stack. Cut the template and fabric apart on the Cut Lines, moving from one to the next in numerical order. When the cutting is completed, you will have (8) pieces beneath each Template.



Step 2: If you have cut all of the strips from the same fabric, clip the pieces together and place the DL-Sections in Bag #DL and the DR-Sections into Bag #DR.

Step 3: If you are using different fabrics, you must sort the pieces by color. Sort the triangles as follows:

- (8) Fabric D3 triangles under the Sec. DL-2 Template
- (8) Fabric D4 triangles under the DL-5 Template
- (8) Fabric D5 triangles under the DL-8 Template
- (8) Fabric D6 triangles under the DL-11 Template
- (8) Fabric D7 triangles under the DR-2 Template
- (8) Fabric D8 triangles under the DR-5 Template
- (8) Fabric D9 triangles under the DR-8 Template
- (8) Fabric D10 triangles under the DR-11 Template

Accent Fabric D4: Cut (2) 7" by 42" strips and stack them facing *right-side-up*.



Step 1: Position the *T-Template DL* onto the strip stack and cut (4) stacks of fabric pieces the same size as the T-Template. Then, position *T-Template DR* onto the strip stack and cut (4) stacks.



Step 2: Clip the fabric pieces together and place the *T-Template DL* stack into Bag #DL and *T-Template DR* stack into Bag #DR.

STACKING: BAGS DL & DR, UNITS DL & DR



Unit DR Sew Side
Sort the pieces for Units DL & DR in numerical order. You should have (8) fabric pieces beneath each template. Position the templates and fabric pieces facing *right-side-up*, with the *sew-sides* aligned at the top. Sec. 1 does not have a sew side.



► Stacking

The stacking process begins with Sec. 13 on the bottom. The pieces are then stacked in reverse order finishing with Sec. 1 on top as shown.

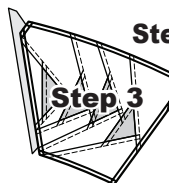
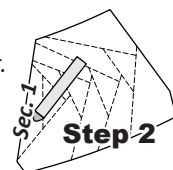
FOUNDATION PAPER PIECING, BAG DR



Step 1: Place Unit DR *right-side-up* onto your table and position as shown.

NOTE - Tracing the Dashed Lines: Place the foundation paper onto a light table. Flip the foundation paper over and trace the dashed lines printed on the front side of the foundation paper, onto the backside of the paper.

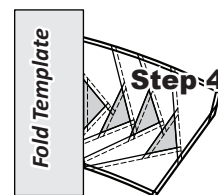
Step 2: Find Sec. 1 on the foundation paper. Place a small amount of fabric glue on the *backside* of the paper under Sec. 1.



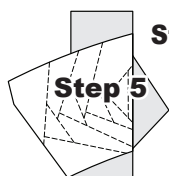
Step 3: Position the first piece of fabric for Sec. 1 *wrong-side-up* on your table. Lift the foundation paper, slide the fabric under Sec. 1 and glue the first piece of fabric to the backside of the paper. Steps 2 & 3 are repeated for each foundation unit before moving onto Step 4.

NOTE - Fabric Placement: The *wrong-side* of the fabric is against the backside of the paper. The fabric must extend beyond the edges of the dashed lines to cover the underneath side of Sec. 1.

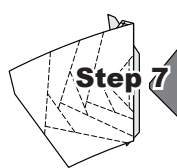
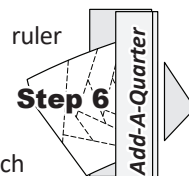
Step 4: Place the fold template over the top of Sec. 1. Line the edge up with the solid black line marked Line 1.



Step 5: Fold the paper back over the top of the fold template.



Step 6: Place the *Add-A-Quarter* ruler next to the folded back section lip-side down and trim the fabric with your rotary cutter. This leaves you with a quarter-inch seam allowance which, is lined up with the sew side on the next piece of fabric.



Step 7: Place the fabric piece for Sec. 2, *right-side-up* next to the folded back paper as shown.

Step 8: Lift the foundation paper and slide the fabric under Sec. 2. Line the sew-side up with

