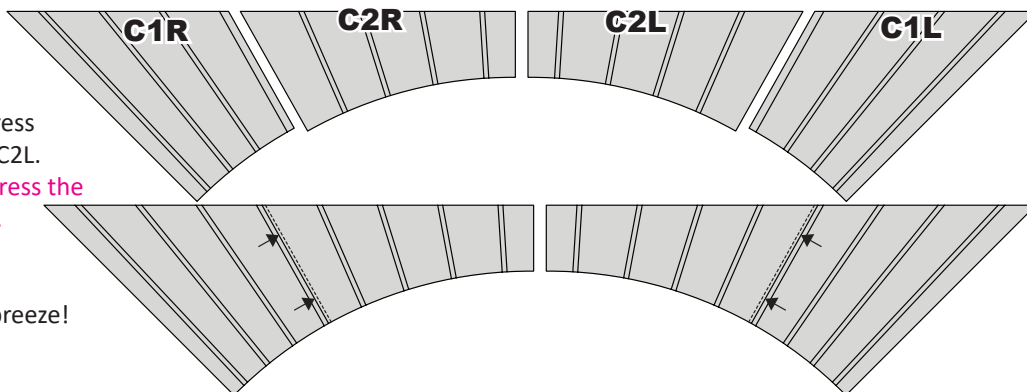


► Assembling Group C

- Set your machine to sew a 1/4" seam.
- Unit C2L is sewn to Unit C1L. Press the seams facing towards Unit C2L.
- Unit C2R is sewn to Unit C1R. Press the seams facing towards Unit C2R.
- Remember to use the Smart Corners and TRP Lines to make sewing these units together a breeze!



QUILT ASSEMBLY

The following information will walk you through the process of assembly for the Willow Center and Sunrise Groups B and C.

Step 1: Illustration 1 (Page 24): Place the (4) Willow Group pieces A-E, together with the Sunrise Mixers pieces Group B and C on the design wall according to Illustration 1 on Page 24.

Step 2: Illustrations 2-4 (Page 24 & 25): Join the Willow Center and Sunrise Groups B and C as shown, using the Curved Piecing instructions on this page. Press the seams in the direction of the arrows in Illustration 2, 3 and 4.

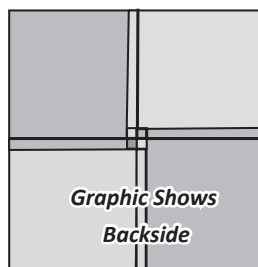
Step 3: Illustration 5 (Page 26): Join the Left side and right side of each quadrant of the quilt. Press the seams in the direction shown in Illustration 5.

Step 4: Illustration 6 (Page 26): Join the 4 quadrants of the quilt. Press the seams in the direction shown by the arrows. To achieve this pressing concept, you will need to pick back some stitches at the very center of the quilt.

4-Patch Pressing Instructions: A few stitches are picked back at each intersecting seam. The seams are then pulled in opposing directions before pressing.

Step 5: Your quilt is now ready for quilting! Remove any remaining paper, if you have not done so already.

► Tweaking Graphic



CURVED PIECING GROUP B TO GROUPS A AND C

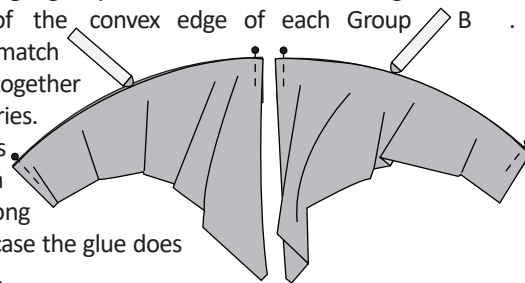
NOTE - Machine Settings: Set your machine up to sew a 1/4" seam allowance before you begin the curved piecing.

Group B Foundation Papers: The foundation papers are left on the backside of the Unit B papers until after the Curved Piecing is complete for Step 1-3. Graphics are not shown for sewing Group C to Group B, but they are shown for sewing Group C & B to Group A. It is an identical process, so we only showed one set of graphics and chose the second step so you could see the completely Assembled Group.

Step 1: Position Sunrise Group C onto the top of Sunrise Group B, *right-sides-together*. Match and pin the first edge using two (2) pins, weaving the pins through both units along the sides to hold the edges together. The weaving provides a more secure hold than simply pinning the edges one time.

Step 2: Match and pin the second edge using two (2) pins, to hold the edges.

Step 3: Then match and pin the registration lines along the curved edges. Using a glue pen, dab a small amount of glue around the perimeter of the convex edge of each Group B. Quickly shape and match the curved edges together before the glue dries. After the edges are glued add a few more pins along the edges just in case the glue does not hold very well.



Step 4: Remove the foundation papers from the backside of Group B before you sew the pieces together.

Step 5: Position the pieces at your machine with Group C next to the presser foot. This will result with Group B being on the bottom next to the feed dogs.

NOTE - The Purple Thang: The Purple Thang works great as a third finger to help hold the pieces together when sewing the curves. It can be used to smooth out pleats and hold the edges together.

Step 6: Sew the pieces together. Make sure your machine is set to sew a quarter-inch seam allowance. Sew a few stitches, pulling the pins out as you sew. Complete the sewing on the Group B and Group C units. Press the seam towards Group C.

Step 7: Use this same Curved Piecing Technique to sew the Willow Center wedges to the Sunrise Group B/C border pieces. Reference the graphics in Illustration 4 on Page 25 for pressing information. Note that you can press this seam either direction (towards the Center or Border). In this group of mixers, you may find it lies better if pressed towards the **border** because there is the least bulk in this direction. But, in other patterns that use this layout, it might make the most sense to press towards the **Center**. It is up to you, just press all the seams the same directions per the Stacked Seams note on Page 24!

