

Vintage Rose

Booklet 3, Group B, Units B1-B4 & S1-S4

Booklet 2: Includes the Foundation Papers, Templates, Template Layout Sheets, and Instructions needed to complete:

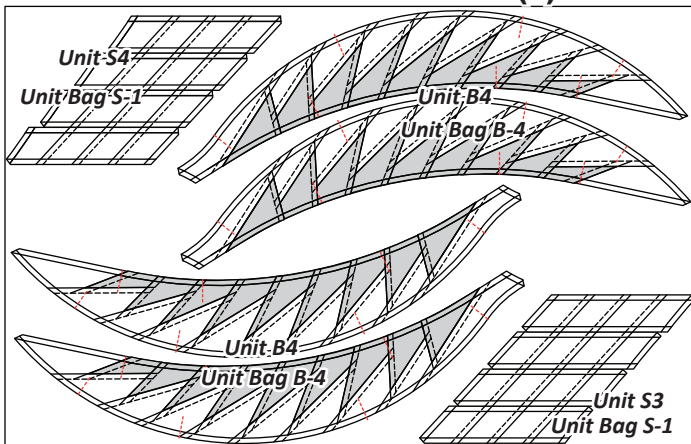
- Units B1-B4 & Units S1-S4: Rose Bud and Thorns

Newsprint: The following newsprint is included in Booklet 2.

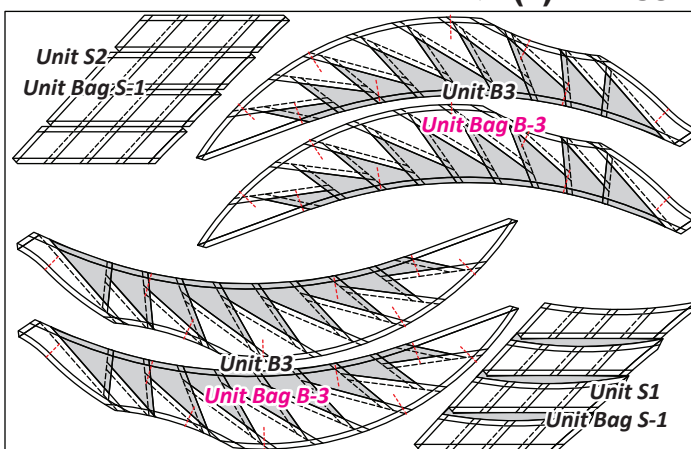
- NP 434 Unit B4: Unit S3, S4, & B4 2 Sheet
- NP 435 Unit B3: Unit S1, S2, & B3 2 Sheet
- NP 539 Unit B1 & B2 1 Sheet
- TP 254 Group B: Templates 1 Sheet
- TP 255 Group B: Templates 1 Sheet
- TP 287 Group B: Templates 2 Sheet

The Foundation Papers, Templates and Template Layout Sheets are cut out at this time and placed in the assigned bags listed below the newsprint graphics. Reference Page 3 of the Instruction Booklet under **Foundation Papers and Templates* on how to cut out the Foundation Papers and Template Layout Sheets.

▶ (2) NP 434



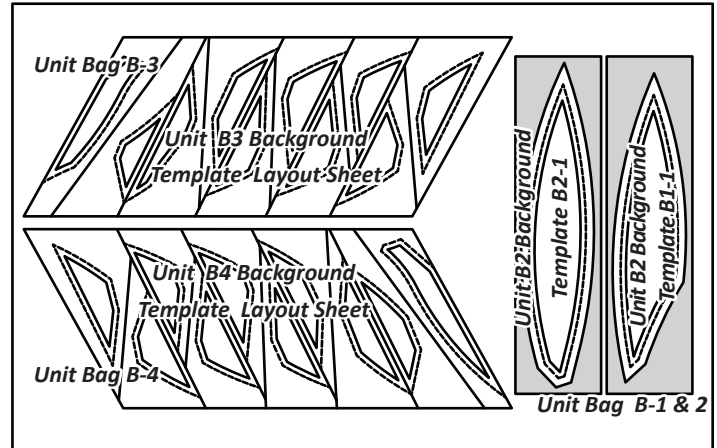
▶ (2) NP 435



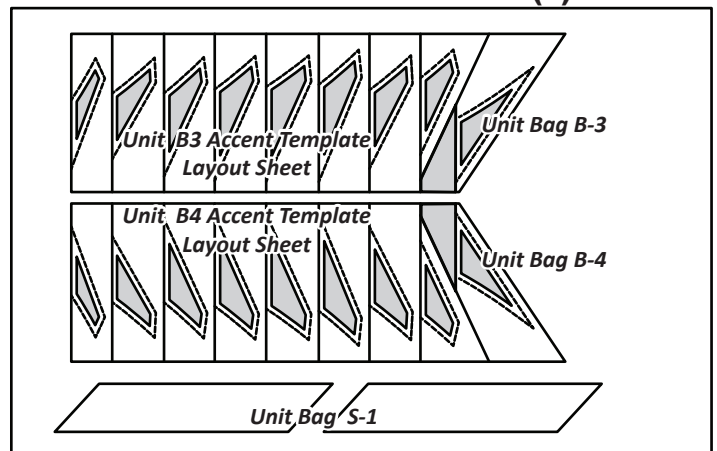
Ziploc Bags: (4) large Ziploc bags are needed to keep your fabrics, templates, and papers organized. Label as follows:

- Group B: [Unit Bag B-1 & 2] [Unit Bag B-3] [Unit Bag B-4]
- Group B: [Unit Bag S-1]

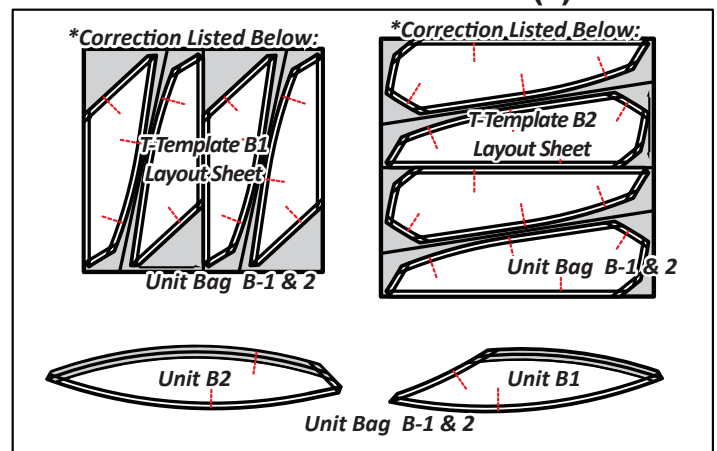
▶ (1) TP 254



▶ (1) TP 255



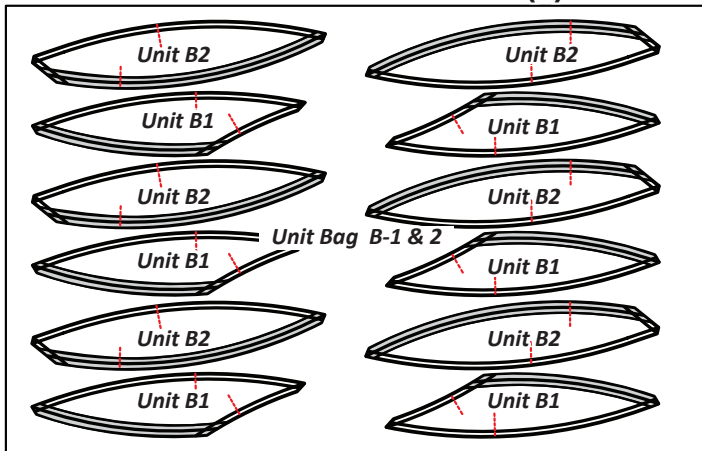
▶ (2) TP 287



***Corrections:** Please make the following correction for the Cut Sizes, on both T-Templates B1 & B2 [TP 287].

- *T-Template B1 Layout Sheet: Cut Size 11" by 42" Strips
- *T-Template B2 Layout Sheet: Cut Size 13" by 42" Strips

► (1) NP 539



Fabric Swatch Chart: When you read your Fabric Swatch Chart you will find (7) Fabric #s listed. If you are splitting the Fabric #s into (2) color groups then place a fabric swatch in each box referenced for Group A and Group B.

Group B: Unit B1-B4, Fabric Swatch Chart

FABRIC # REFERENCE	FABRIC GROUP A	FABRIC GROUP B
Fabric B1: T-Temp B1 & B2: Background	B1:a Fabric Swatch	B1:b Fabric Swatch
Fabric B2: Vein (OPTIONAL) Unit B2 & B1 Accent	B2:a Fabric Swatch	B2:b Fabric Swatch
Fabric B3: Rose Petal Unit B1-1: Background	B3:a Fabric Swatch	B3:b Fabric Swatch
Fabric B4: Rose Petal Unit B2-1: Background	B4:a Fabric Swatch	B4:b Fabric Swatch
Fabric B5L: Thorns Unit B3: Background (TLS)	B5L:a Fabric Swatch	B5L:b Fabric Swatch
Fabric B6L: Thorns Unit B3: Accent (TLS)	B6L:a Fabric Swatch	B6L:b Fabric Swatch
Fabric B5R: Thorns Unit B4: Background (TLS)	B5R:a Fabric Swatch	B5R:b Fabric Swatch
Fabric B6R: Thorns Unit B4: Accent (TLS)	B6R:a Fabric Swatch	B6R:b Fabric Swatch

General Color Information: At this time, take a few minutes and study the quilt samples shown on the cover sheets. As with Group A, some of the quilts we designed using (2) or more fabrics for the background pieces and accent pieces. In the following chart we only provided a Swatch Box for (2) Fabric Groups. If you choose to use more than two colors for any one section you will need to adjust your swatches accordingly through out these instructions. In many cases, shops made the B5L and B5R fabrics the same. In this case, they are simply called B5. The same applies to Fabric B6R and B6L. If the same fabric was used, it is called B6.

NOTE - If you are making the Rainbow Quilt, please reference the Rainbow cutting instructions provided in the Introduction Booklet.

Assigned Fabric #: We have assigned Fabric #s to each of the Sec. # on the Foundation Units below. These Fabric #s pair up with the Yardage Charts provided for each unit in the Introduction Booklet. Before you begin cutting you should also pair the Fabric # up to the Templates and Template layout sheets by adding a small swatch of fabric to each layout sheet. If you use Quiltster to pre-color your quilt, you will find the Fabric #s also match up with the numbers assigned in Quiltster.

► **Color Group: A**

- Fabric B1:a -B6R:a

► **Color Group: B**

- Fabric B1:b-B6R:b

GROUP B, UNIT CUTTING INSTRUCTIONS

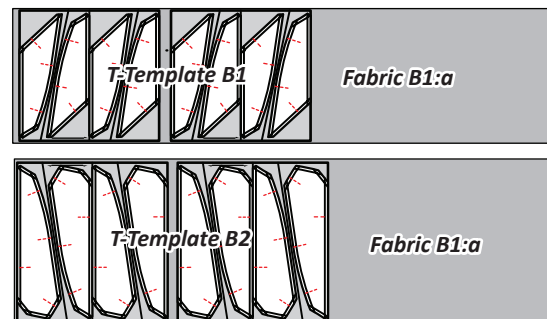
Before cutting the fabrics, take a few minutes to get organized. Cut and paste small fabric swatches onto the sections associated with each fabric on the foundation papers and their respective Templates and Template Layout Sheets. This really helps to keep you organized while cutting and sewing fabrics from multiple color groups.

► **Cutting Hints Background T-Template B1 & B2**

If you selected one color for your background pieces you will need to cut (1) 11" by 42" strip and (1) 13" by 42" strip from Fabric B1:a. If you selected two colors for your background pieces you will need to cut (1) 13" by 42" strip from each Fabric B1:a & B1:b.

Fabric B1a: If you chose one fabric, cut (2) 12" x 11" rectangles

using the **T-Template B1 Layout Sheet** from the 11" strip and (2) 12-1/2" x 13" rectangles from the 13" strip using the **T-Template B2 Layout Sheet.**



NOTE - Vein: The Vein shown in Color Group B is optional. Review Pages 3 & 4 to decide if you want to include it. Quiltster includes block options for both.