

ASSEMBLY OF YOUR QUILT

The following information will walk you through the process of assembly for Groups A, B, and C of your design.

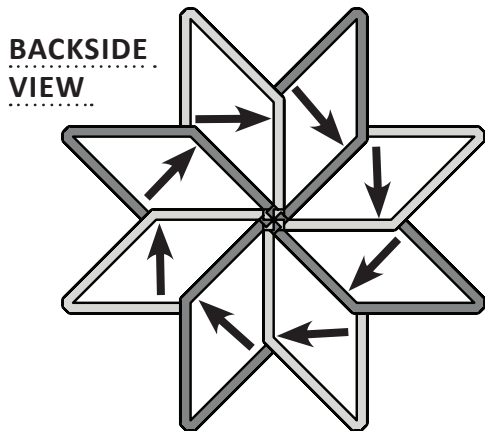
Step 1: Illustration 1 (Page 28): Place all of the Group A, Group B and Group C pieces on the design wall according to Illustration 1 on Page 28.

Step 2: Illustration 2 (Page 28): Join Group A, B, and C as shown, using the Curved Piecing instructions on this page. Press the seams in the direction of the arrows in Illustration 2.

Step 3: Illustration 3 (Page 29): Join the Left side and right side of each quadrant of the quilt. Press the seams in the direction shown in Illustration 3.

Step 4: Illustration 4 (Page 29): Join the 4 quadrants of the quilt. Press the seams in the direction shown by the arrows. To achieve this pressing concept, you will need to pick back some stitches at the very center of the quilt. Find the hidden stitches and just pick them back. When done properly, you can press the center of the quilt perfectly flat to cause a small octagon to form (an octagon forms instead of a star because you have smart corners) at the back of the intersection. It takes some practice to get this perfect, but when done properly, your quilt will not bunch up in the center. Reference the Star Tweaking Diagram below for a visual graphic of what the intersection will look like when it is complete (you will not have the star points). Your quilt is now ready for quilting! Remove any remaining paper, if you have not done so already.

► STAR TWEAKING GRAPHIC



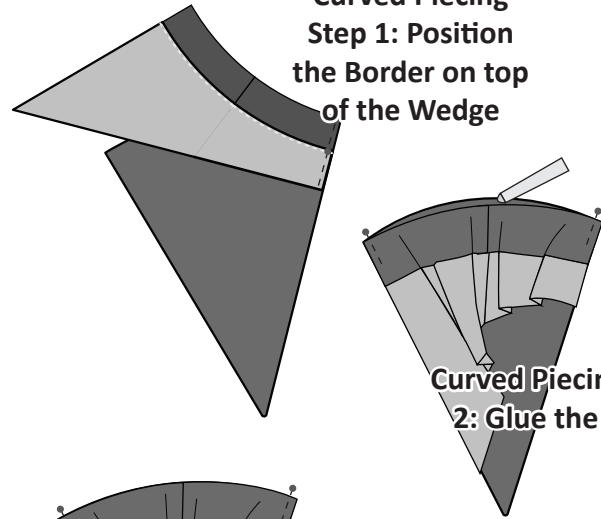
CURVED PIECING GROUP B TO GROUPS A AND C

NOTE - Machine Settings: Set your machine to sew a quarter-inch seam allowance before you begin the curved piecing.

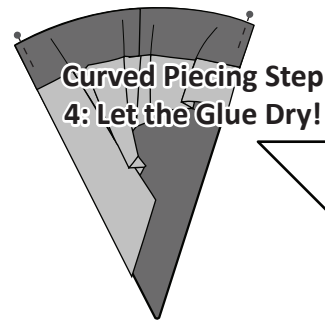
NOTE - Graphics: Graphics are not shown for sewing Group C to Group B, but they are shown for sewing Group C & B to Group A. It is an identical process, so we only showed one set of graphics and chose the second step so you could see the completely Assembled Group.

Step 1: Position Group C onto the top of Group B, *right-sides-together*. Match and pin the first edge using two (2) pins, weaving the pins through both units along the sides to hold the edges together. The weaving provides a more secure hold than simply pinning the edges one time.

Curved Piecing Step 1: Position the Border on top of the Wedge

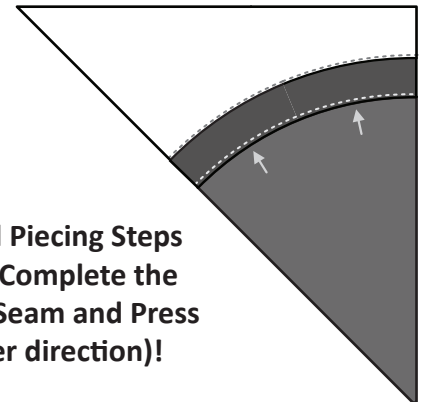


Curved Piecing Step 2: Glue the edge



Curved Piecing Step 4: Let the Glue Dry!

Curved Piecing Steps 5 & 6: Complete the Curved Seam and Press (either direction)!



Step 2: Match and pin the second edge using two (2) pins, to hold the edges. Using a glue pen, dab a small amount of glue around the perimeter of the convex edge of each Group B. Quickly shape and match the curved edges together before the glue dries.

Step 3: Position the pieces at your machine with Group C next to the presser foot. This will result with Group B being on the bottom next to the feed dogs.

NOTE - The Purple Thang: The Purple Thang works great as a third finger to help hold the pieces together when sewing the curves. It can be used to smooth out pleats and hold the edges together.

Step 4: Sew the pieces together. Make sure your machine is set to sew a quarter-inch seam allowance. Sew a few stitches, pulling the pins out as you sew. Press the seam towards Group C.

Step 5: Complete sewing all of Group B to Group C.

Step 6: Use this same Curved Piecing Technique to sew the Group A wedges to the Group B/C border pieces. Reference the graphics above and in Illustration 2 on Page 28 for pressing information. Note that you can press this seam either direction (towards Group A or Group B). In the Allisyn's Wondered Land pattern is recommended to press it towards Group A because there is the least bulk in this direction. But, in other patterns that use this layout, it might make the most sense to press towards Group B. It is up to you, just press all the seams the same directions per the Note at the bottom of [Page 28!](#)