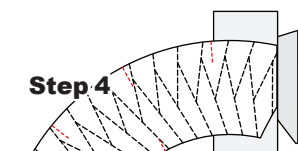
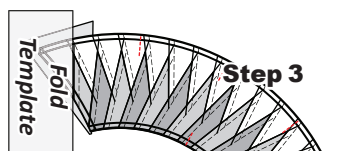
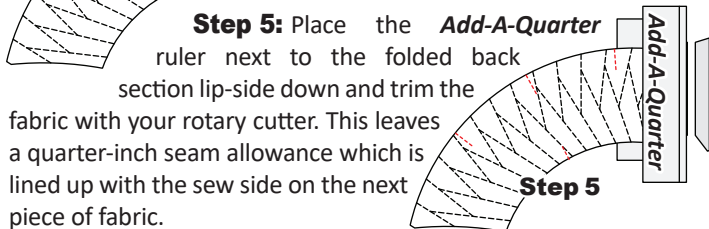


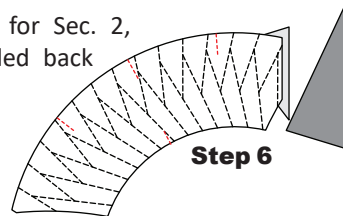
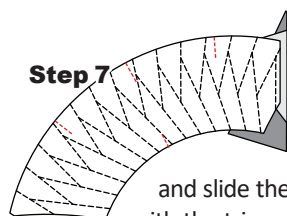
**Step 3:** Place the fold template over the top of Sec. 1. Line the edge up with the solid black line marked Line 1.



**Step 4:** Fold the paper back over the top of the fold template.



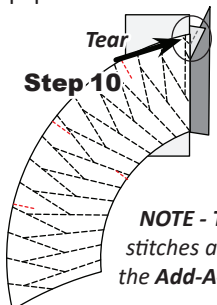
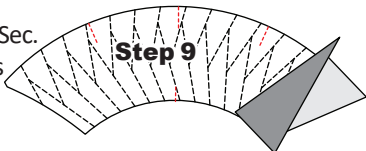
**Step 6:** Place the fabric piece for Sec. 2, *right-side up* next to the folded back paper as shown.



**Step 7:** Lift the foundation paper and slide the fabric under Sec. 2. Line the sew-side up with the trimmed seam allowance. Make sure the fabric extends beyond the boundaries of the dashed lines for Sec. 2. Repeat **Steps 3-7** for each foundation paper before moving onto Step 8.

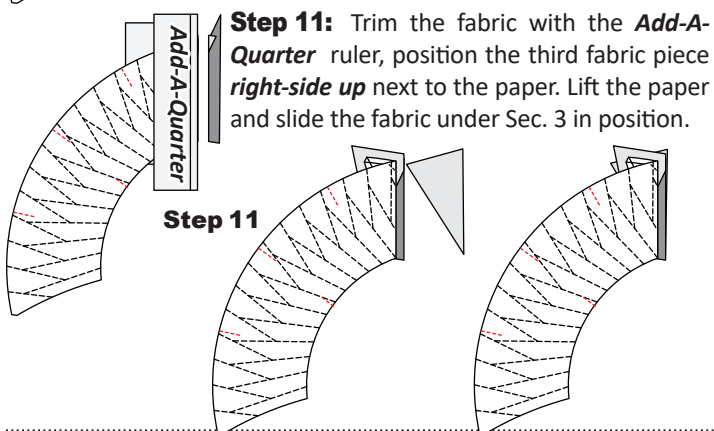
**Step 8:** Sew on Line 1. The stitches should start and stop about 1/8" past the beginning and the end of each stitch line. Complete the sewing on each Unit before moving onto the next step.

**Step 9:** Loosen the glue under Sec. 1, then press the fabric pieces open on the backside of each paper.



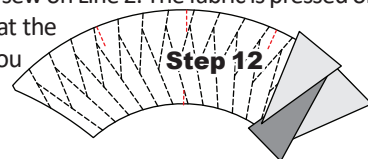
**Step 10:** Position the fold template over the top of Sections 1 and 2, lining the edge up with Line 2. Fold the paper back and tear the paper along the stitches on Line 1. Stop tearing when you hit the fold template.

**NOTE - Tear Back the Paper:** Tearing the paper along the stitches allows the fabric to relax making it possible to place the *Add-A-Quarter* ruler along the folded edge.



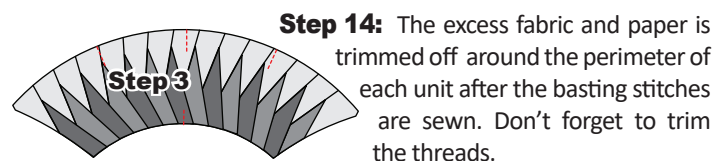
**Step 11:** Trim the fabric with the *Add-A-Quarter* ruler, position the third fabric piece *right-side up* next to the paper. Lift the paper and slide the fabric under Sec. 3 in position.

**Step 12:** Open the paper, and sew on Line 2. The fabric is pressed on the backside of each unit. Repeat the paper piecing process until you have completed each unit.



### ► Transition Registration Points

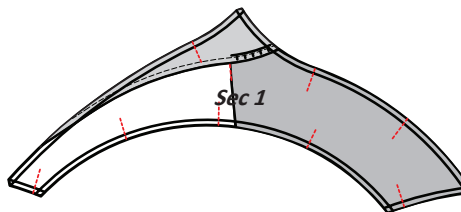
**Step 13:** After the paper piecing is complete, the registration lines are sewn on the foundation papers. There are *six registration lines* printed on each foundation paper. These (TRP) lines are important so don't skip them. Remember the stitching begins along the edge of the paper and stops at the end of the dotted line.



The foundation paper can be removed from the backside of each unit at this time, however it is best to leave the foundation paper attached to your fabric until you are ready to assemble the quilt. At this time you can place both units back into Unit Bag D-2.

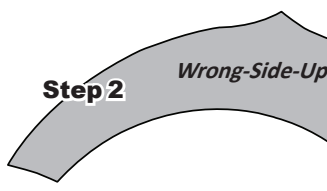
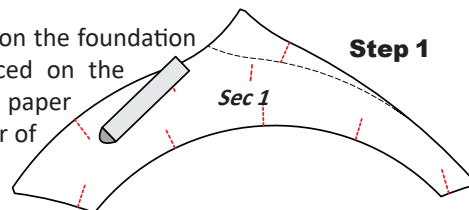
**Step 14:** The excess fabric and paper is trimmed off around the perimeter of each unit after the basting stitches are sewn. Don't forget to trim the threads.

## FOUNDATION PAPER PIECING: UNIT D3



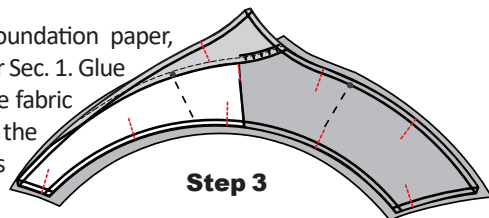
**NOTE - Tracing the Dashed Lines:** Optional

**Step 1:** Find Sec. 1 on the foundation paper. Glue is placed on the *backside* of the paper around the perimeter of Sec. 1.



**Step 2:** Position the first piece of fabric for Sec. 1 *wrong-side-up* on your table.

**Step 3:** Lift the foundation paper, slide the fabric under Sec. 1. Glue is used to adhere the fabric to the backside of the paper. Repeat Steps 1 and 2 for each foundation unit.



**NOTE - Secure your Fabrics with Pins:** A couple pins should be added to keep the fabric temporarily from moving.