

Booklet 2, Group A, Unit A

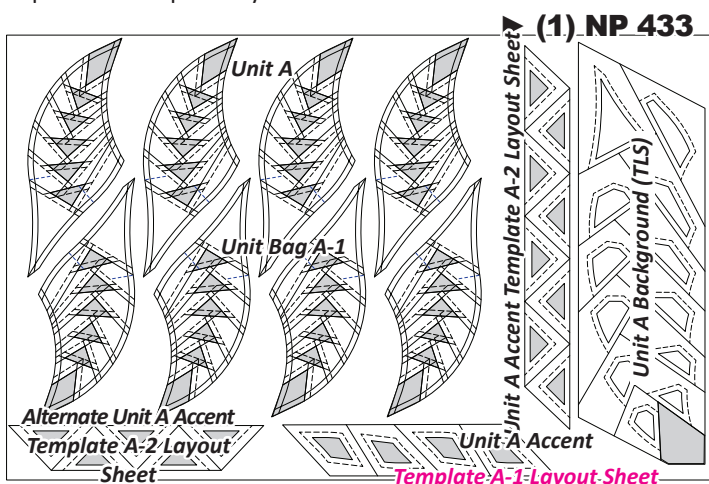
Booklet 2: Includes the foundation papers, template layout sheets, and instructions needed to complete:

- Unit A: Center Lily

Newsprint: The following newsprint is included in Booklet 2.

- NP-433 Unit A, Unit A (TLS) 1 Sheet

The Foundation Papers, Templates and Template Layout Sheets are cut out at this time and placed in the assigned bags listed below the newsprint graphic. Reference Page 3 of the Instruction Booklet under ***Foundation Papers and Templates** on how to cut out the Foundation Papers and Template Layout Sheets.



Ziploc Bags: (1) large Ziploc bag is needed to keep your fabrics, templates, and papers organized. Label as follows:

- Group A: [Unit Bag A-1]

Clip the Unit A papers together into (2) groups of four papers. Label the groups as [Fabric Group:A] and [Fabric Group:B]. Place these papers with the Unit A Template Layout Sheets in Unit Bag A-1.

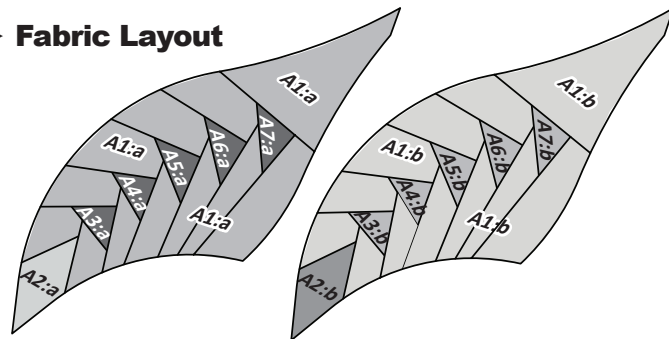
General Color Information: At this time you should take a few minutes and study the different quilt samples shown on the cover sheets. The quilts were created with several color options. This was made possible by dividing the Cutting Instructions for each Unit into two color groups, [Fabric Group: A] and [Fabric Group: B]. This allows us to use more than one color with each Fabric #.

► **Color Group: A** ► **Color Group: B**

- Fabric A1:a-A7:a • Fabric A1:b-A7:b

Assigned Fabric #: We have assigned Fabric #s to each of the Sec. #s on the Foundation Units. These Fabric #s pair up with the Yardage Charts provided for each unit in the Introduction Booklet. These Fabric # will also be used to reference the Templates and Template Layout Sheets used to cut the fabric pieces throughout these instructions.

► **Fabric Layout**



Fabric Swatch Chart: When you read your Fabric Swatch Chart you will find (7) Fabric #s listed. If you are dividing the Fabric #s into (2) color groups, then place one fabric swatch in each box referenced for Group A and Group B.

Group A: Unit A, Fabric Swatch Chart

FABRIC # REFERENCE	FABRIC GROUP A	FABRIC GROUP B
Fabric A1: Unit A: Background (TLS)	A1:a Fabric Swatch	A1:b Fabric Swatch
Fabric A2 Unit A: Accent Temp A-1, Sec. 1	A2:a Fabric Swatch	A2:b Fabric Swatch
Fabric A3 Unit A: Accent Temp A-2, Sec. 4	A3:a Fabric Swatch	A3:b Fabric Swatch
Fabric A4 Unit A: Accent Temp A-2, Sec. 7	A4:a Fabric Swatch	A4:b Fabric Swatch
Fabric A5 Unit A: Accent Temp A-2, Sec. 10	A5:a Fabric Swatch	A5:b Fabric Swatch
Fabric A6 Unit A: Accent Temp A-2, Sec. 13	A6:a Fabric Swatch	A6:b Fabric Swatch
Fabric A7 Unit A: Accent Temp A-2, Sec. 16	A7:a Fabric Swatch	A7:b Fabric Swatch

GROUP A,CUTTING INSTRUCTIONS

Before you begin cutting fabrics, take a few minutes to get organized. Cut and paste small fabric swatches onto the foundation papers and their respective Template Layout Sheets. A small swatch of each color, Fabric A1- A7, pasted on the Sec. # in which they will be sewn will keep you organized. If you are cutting for **both** fabric groups, A & B then cut and paste fabric swatches for both groups.