

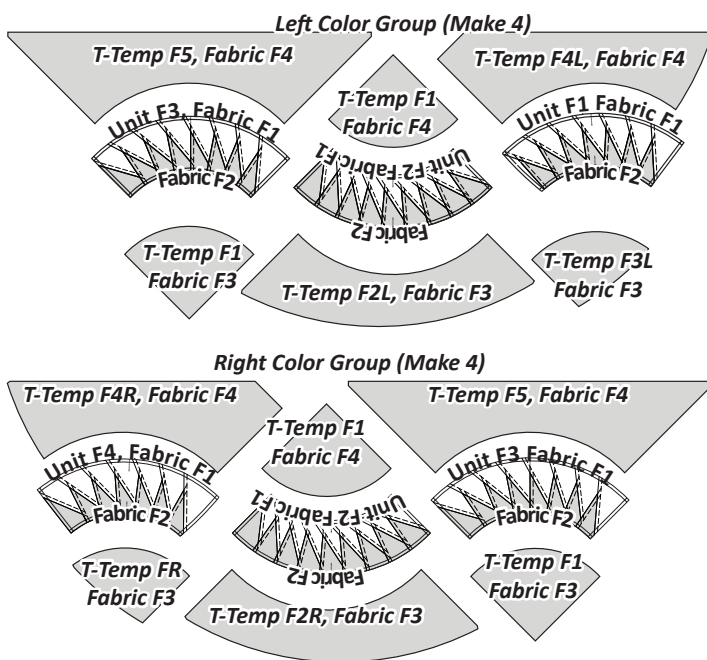
**Units F1, F2, F3, and F4 Yardage:  
Make (4) F1 and F4 and (8) F2 and F3**

GROUP-F FABRIC #	YARDAGE INCH	ASSIGNED COLOR
Fabric F1 Units F1 to F4 Bkgrnd (TLS)	2 yd or (72")	FABRIC SWATCH
Fabric F2 (Border Unit) Units F1 to F4 Accent (TLS)	1 3/4 yd or (60")	FABRIC SWATCH

**T-Template F1, F2R, F2L, F3R, F3L, F4R, F4L, and F5 Yardage, Make (4) Each**

GROUP-F FABRIC #	YARDAGE INCH	ASSIGNED COLOR
Fabric F3 (T-Temp F1, F2R, F2L, F3R, & F3L)	2 yd or (72")	FABRIC SWATCH
Fabric F4 (T-Temp F1, F4R, F4L & F5)	2-3/4 yd or (99")	FABRIC SWATCH

► **Group F, Color Layout**



**NOTE - Color Layout Graphics Note:** Units are shown from the Back and T-Templates from the Front in the Color Layout Graphic. When you lay out the final units, all from the front side, Group 1 and Group 2 will switch places!

**GROUP F SUB-CUTTING INFORMATION**

**Step 1:** From Fabric F1, sub-cut the following strips and place them into the appropriate bags:

- (2) 6" x 42" strips for Bags #12, Unit F1
- (4) 6" x 42" strips for Bag #13, Unit F2
- (4) 6" x 42" strips for Bag #14, Unit F3
- (2) 6" x 42" strips for Bag #15, Unit F4

**Step 2:** From Fabric F2, sub-cut (10) 6" x 42" strips and place them into the appropriate bags:

- Place (6) strips into Bag #12. Pieces will be placed in Bags #14 and #15 later.
- Place (4) strips into Bag #13.

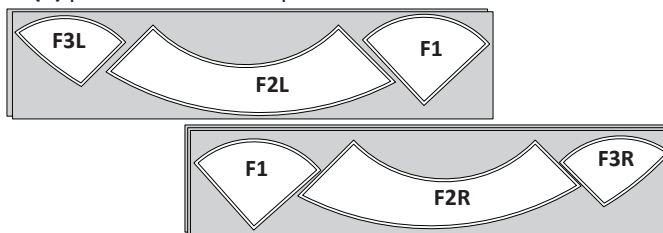
**Step 3:** From Fabric F3, sub-cut (8) 9" x 42" strips and place these into Bag #16.

**Step 4:** From Fabric F4, sub-cut (12) 8" x 42" strips and place these into Bag #17.

**CUTTING INSTRUCTIONS: BAG #16  
TEMPLATES F1, F2L, F2R, F3L, & F3R**

**Step 1:** Remove the (8) 9" x 42" strips cut from Fabric F3 along with the F1, F2L, F2R, F3L, and F3R Templates in Bag #16.

**Step 2:** The strips are stacked right-side-up, into two groups of (4) strips. Position the three templates onto your strips as shown. Cut (4) pieces for each template.



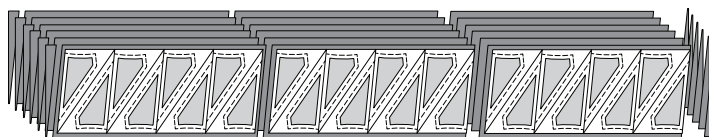
**Step 3:** Clip the fabric and paper templates together and place pieces back into Bag #16. Template F1 is re-used in Bag #18.

**NOTE - Keep Your Templates!** Do not lose or discard these templates at this point! The templates are marked with RP Lines and you will need to mark these on your fabrics later in the pattern and then sew 1" RP lines before you can complete the assembly.

**CUTTING INSTRUCTIONS:  
BAGS #12, #14, AND #15:  
UNITS F1, F3, & F4**

**Step 1:** Remove the (6) 6" x 42" strips cut from Fabric F2 in Bags #12 along with both Unit F1, F3, & F4 Accent Template Layout Sheets. The fabric strips are stacked facing right-side-up.

**Step 2:** Position the layout sheets as shown onto your strips and cut three stacks of (6) pieces.



**Step 3:** Restack into (2) stacks of (8) pieces (discard the extra) and position (1) TLS onto each stack. Cut on the Cut Lines to separate the pieces. Paper clip the edges before cutting. Place the complete stacks cut with one of the TLS into Bag #14 to be sewn with Unit F3.

