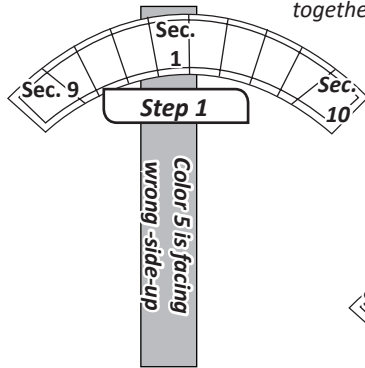
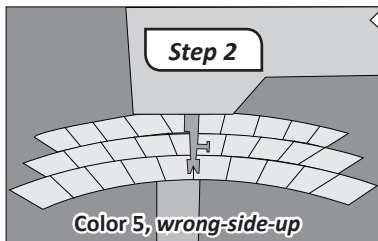
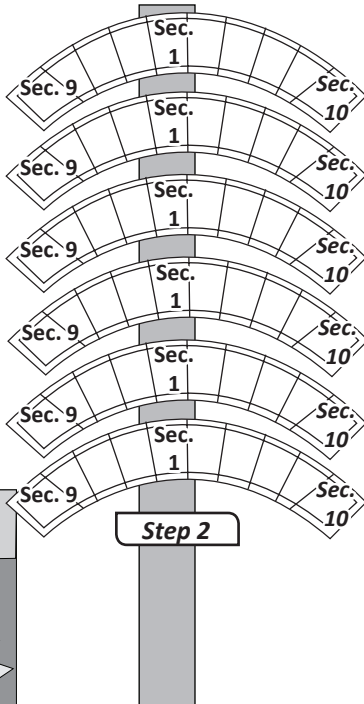


NOTE - Starting Strip Placement: Colors 4 and 5 are facing right-sides-together.



Step 1: Starting at your machine, position strip #1, (Color 5) and strip #2, (Color 4) **right-sides-together**. Color 5 is on the top.

Step 2: The strip piecing begins again starting with Unit B. The dashed line next to Line 1, is lined up with the edge of both fabric strips. The sewing begins with the first foundation paper and ends with the eighth (8th) on each strip set.



Step 3: When you are done sewing, carry the strips with the papers to the ironing board. Refer back to page 4 as a reference, repeating the same steps for pressing and trimming the seam allowances. Continue adding the strips for Sec. 3, 4, and 5.

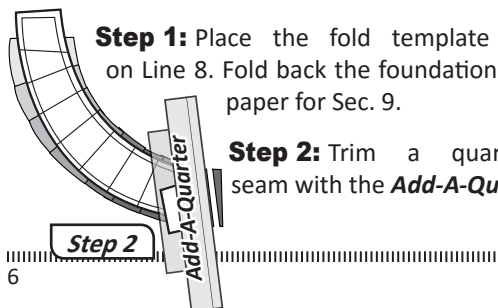
- Sec. 3, is sewn onto strip #3 = Color 3
- Sec. 4, is sewn onto strip #4 = Color 2
- Sec. 5, is sewn onto strip #5 = Color 1

After you complete Sec. 5, the papers are flipped up-side-down, and the strip piecing is continued for Sec. 6, 7, and 8.

- Sec. 6, is sewn onto strip #6 = Color 6
- Sec. 7, is sewn onto strip #7 = Color 7
- Sec. 8, is sewn onto strip #8 = Color 8

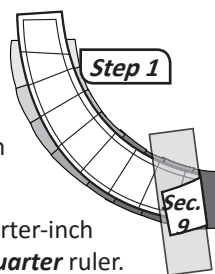
When the strip piecing is completed for each **Ring Color Set**, proceed with the following steps to complete the trimming for the corner units.

► Trimming the Corners, Sections 9 & 10

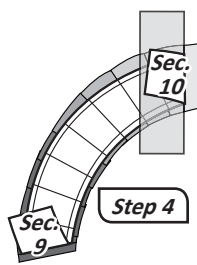


Step 1: Place the fold template on Line 8. Fold back the foundation paper for Sec. 9.

Step 2: Trim a quarter-inch seam with the **Add-A-Quarter** ruler.



Step 3: Reposition the units so Sec. 10 is at the top.



Step 4: Place the fold template on Line 9. Fold back the foundation paper for Sec. 10.

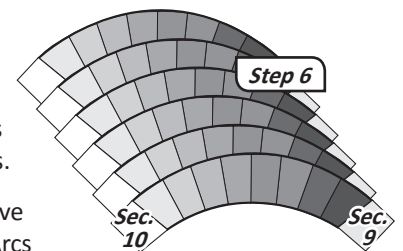
Step 5: Trim a quarter-inch seam allowance using your **Add-A-Quarter** ruler.

Repeat the previous steps to complete the remaining Ring Color Sets for Unit B.

Step 6: Trim the pieces **on the solid black line** along the outer edge of the foundation paper. If you have the Creative Grids Rulers, you can use these to trim the curved edges.

Do not remove the foundation paper at this time. It will be removed after the curved piecing is complete for the center units.

At this point, you should have **(12)** trimmed Wedding Ring Arcs for each Unit A and Unit B.



CUTTING THE CORNER SQUARES

Step 1: From each of the Corner Fabrics A1:a to A1:d, **cut (1) 3" strips**.

Step 2: Stack the strips **right-side-up** and then cut **(6) 3" Squares** from each of the **(4)** colors [Total of **(24)**].

Step 3: *The corner pieces are not sewn onto the foundation papers at this time! Place the squares back into Bag #2 to be added to the quilt during the assembly process in Chapter 3.*



NOTE - Creative Grids Template: If you are using the Creative Grid Templates **DO NOT** use the corner template to cut your corner pieces. Paper piecing is required to add the corners on the foundation papers, therefore the fabrics are cut larger than the template provided in the package. The template in the package is only used if you are not using the foundation papers.