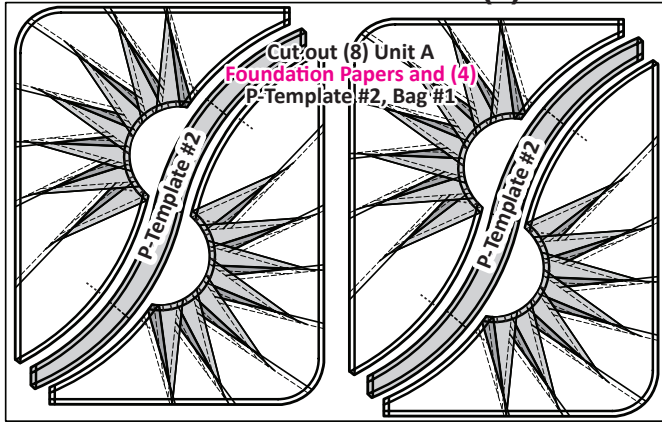


GROUP A: UNIT A

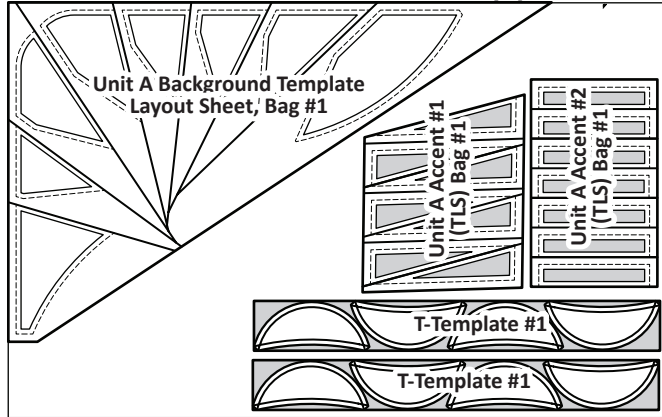
► Foundation Papers and Templates:

Step 1: Cut out (8) Unit A Foundation Papers [NP 428], along with (1) each of the P-Templates and Template Layout Sheets printed on [TP 248]. Place these pieces into one bag.

► (2) NP 428



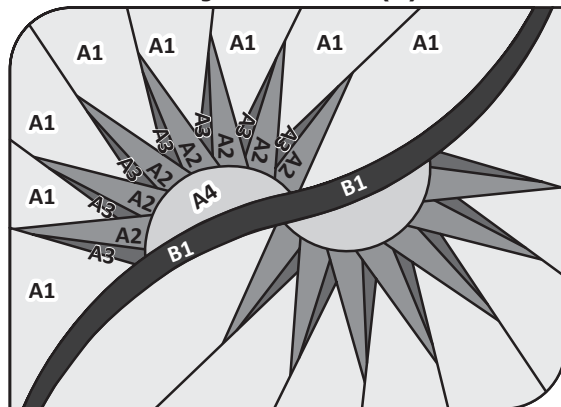
► (1) TP 248



BROKEN DAISY FABRIC INFORMATION:

The Unit Chart includes yardage and fabric references for the templates and Template Layout Sheets. This table is your guide for not only selecting your own colors, but keeping you organized. Don't forget to cut a swatch of your chosen fabric to paste in the box in the Assigned Colors column!

► Fabric Color Layout: Make (4) Placemats

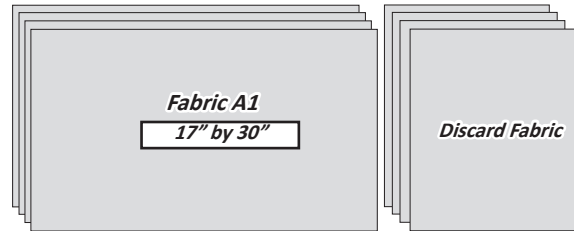


Unit A Yardage: Cutting for (4) Placemats

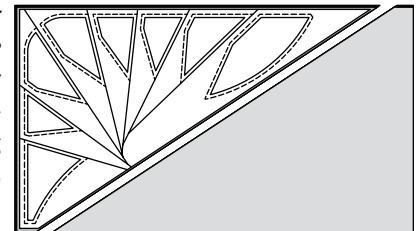
UNIT-A FABRIC #	YARDAGE (OR) STRIP SIZE	ASSIGNED COLOR
<u>COVERSHEET COLORWAY</u>		
Background Fabric A1: Unit A Background (TLS)	2 YDS (or) 65" x 42" Strip	FABRIC SWATCH
Accent Fabric A2: Unit A Accent #1 (TLS)	1/2 YD (or) 16-1/2" x 42" Strip	FABRIC SWATCH
Accent Fabric A3: Unit A Accent #2 (TLS)	3/8 YD (or) 13" x 42" Strip	FABRIC SWATCH
Accent Fabric A4: T-Template #1	1/8 YD (or) 2-1/2" x 42" Strip	FABRIC SWATCH
Accent Fabric B1: P-Template #2	3/8 YD (or) 13-1/2" x 42" Strip	FABRIC SWATCH

► Background (TLS) (Fabric A1)

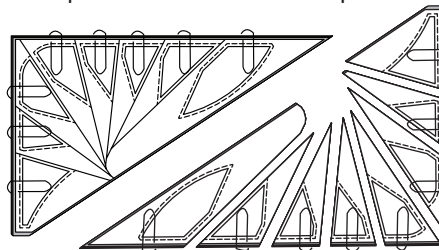
Step 1: Cut (4) 17" by 42" strips from Fabric A1. Stack the (4) strips facing *right-side-up*. Sub-cut one rectangle measuring 17" by 30" from each strip. Discard the remaining fabric.



Step 2: Position the *Unit A Background Template Layout Sheet* on top your 30" by 17" pieces and sub-cut into (8) pieces matching the same size and shape as the Template Layout Sheet.



Step 3: Position the (8) pieces *right-side-up* under the *Unit A Background (TLS)*. Slice through the paper and fabric on Lines 1-7 to separate the individual templates.



Step 4: Clip the templates and fabric pieces together for each section and place into Bag #1.

► Accent #1 (TLS) (Fabric A2)

Step 5: Cut (2) 8-1/4" by 42" strips from Fabric A2. Stack and position the strips facing *right-side-up*.

