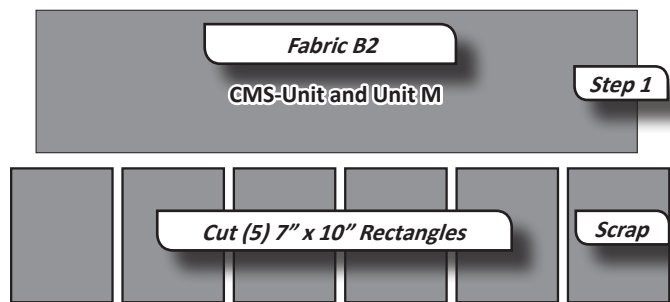
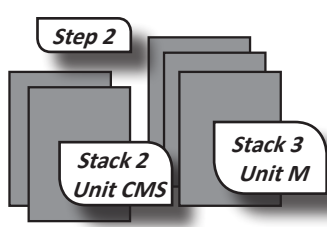


Step 1: Crosscut (5) 7" x 10" rectangles from each strip as referenced in the table (LINE 21, Page 7).

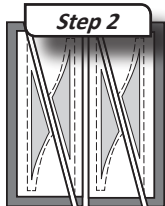
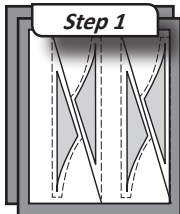


Step 2: Place (2) rectangles in Bag #4 to be cut with the *Medium Center Star Template Layout Sheet*. Place (3) rectangles into Bag #5 to be cut with the *Medium Melon Star Template Layout Sheet*. (LINES 22 and 23, Page 7).



► **Group 1: Medium Center Star TLS: Bag #4**

Step 1: Remove the (2) rectangles from Fabric B2 in Bag #4 and stack them *right-side-up* to be cut with the *Medium Center Star Template Layout Sheet*. Position one (1) copy of the *Medium Center Star Template Layout Sheet* from Bag #4 onto the stack.

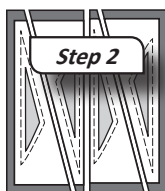
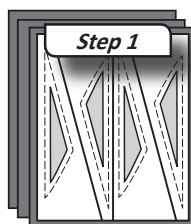


Step 2: Slice through the paper and fabric following the Cut Lines in numerical order.

Step 3: Clip the templates and fabric pieces together and place back into Bag #4 with the CMS Units.

► **Group 2: Medium Melon Star TLS: Bag #5**

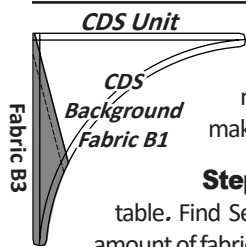
Step 1: Remove the (3) rectangles in Bag #5 and re-stack, *right-side-up* to be cut with the *Medium Melon Star Template Layout Sheet* from Bag #5.



Step 2: Slice through the paper and fabric following the Cut Lines in numerical order.

Step 3: Clip the templates and fabric pieces together and place into Bag #5 with the M-Units.

■ **FOUNDATION PAPER PIECING: UNIT CDS: BAG #3**

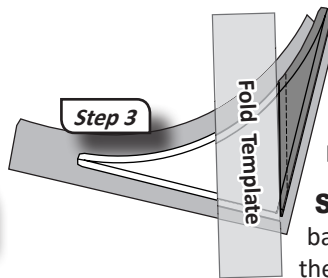
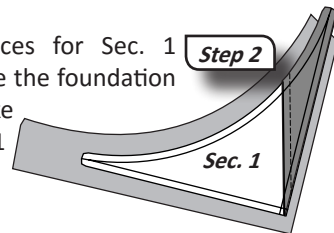


Reference the Cutting Table on Page 7 (LINE 3) to determine the number of CDS Units you will need to make. (For the 30" x 30" Table Topper, make (8) Units).

Step 1: Place the CDS unit *printed-side-up* on your table. Find Sec. 1 on the foundation paper and place a small amount of fabric glue on the *wrong-side* of the paper under Sec. 1.

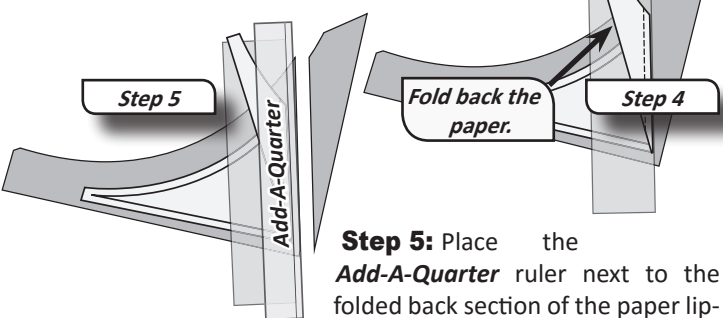
NOTE - Too Much Glue! When adding the glue to the paper, take one very light swipe with the glue stick. The glue is used to adhere the fabric temporarily to the foundation paper until both pieces have been sewn to the paper.

Step 2: Position the fabric pieces for Sec. 1 *wrong-side-up* on your table. Glue the foundation unit onto the fabric as shown. Make sure the underneath side of Sec. 1 is covered with the fabric. Do not worry about the Sec. 2 tip.

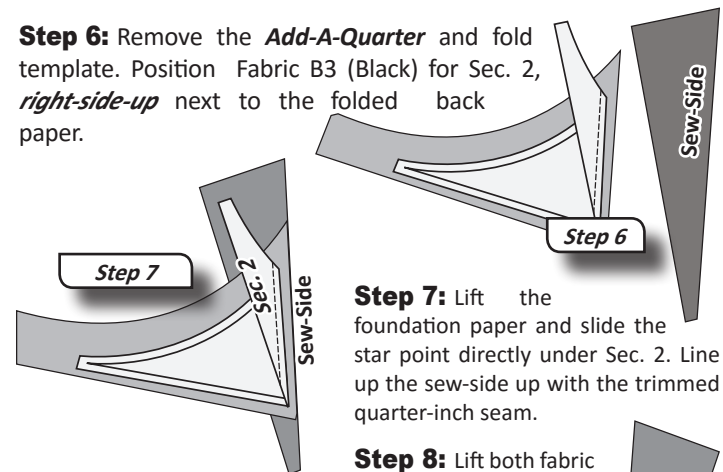


Step 3: Place the fold template over the top of Sec. 1. Line the edge of the fold template up with Line 1.

Step 4: Fold the leg of the star point back over the top of the fold template.



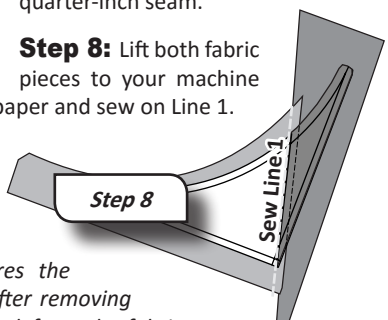
Step 5: Place the *Add-A-Quarter* ruler next to the folded back section of the paper lip-side down and trim the fabric with your rotary cutter. This leaves you with a quarter-inch seam allowance with which to line up the next piece of fabric.



Step 6: Remove the *Add-A-Quarter* and fold template. Position Fabric B3 (Black) for Sec. 2, *right-side-up* next to the folded back paper.

Step 7: Lift the foundation paper and slide the star point directly under Sec. 2. Line up the sew-side up with the trimmed quarter-inch seam.

Step 8: Lift both fabric pieces to your machine along with the paper. Open the paper and sew on Line 1.



NOTE - Loosen the Glue: When you are done sewing, loosen the glue under Sec. 1. This should be done before you press. The heat from the iron adheres the papers to the fabric and even after removing the paper, there is still remnants left on the fabric. On a light background fabric, this can leave a shadow on your fabric and you can see it from the front side. If you forget, get out your spray bottle and spray the fabric until it is removed.