

FEATHER 2: GROUP C: UNITS CR AND CL BAGS #4 & #5 CUTTING INSTRUCTIONS

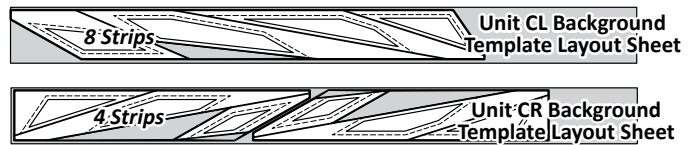
► Foundation Papers and Templates:

Step 1: Cut out (8) each of Unit CR and all of the associated Template Layout Sheets [NP 162]. Cut out (8) of each Unit CL and the associated Templates and Template Layout Sheets from [NP 163]. See the newsprint graphics below for information on how to organize your units and templates into bags. *Refer back to General Information for Foundation papers and templates for additional instructions on how to prepare your foundation papers and templates.

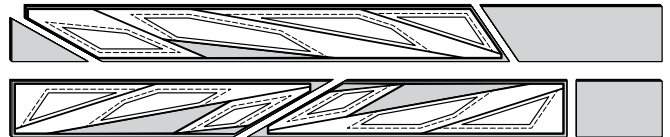
Unit Chart: Unit CL & CR: Make (8), Ea.		
GROUP B FABRIC #	YARDAGE INCH	ASSIGNED COLOR
Background Fabric C1 Unit CR & CL (Background TLS)	1-3/8 yd or (45")	FABRIC SWATCH
Accent Fabric C2 Unit CR & CL: (Accent TLS)	1 yd or (32")	FABRIC SWATCH

► Fabric C1: Background TLS CR & CL

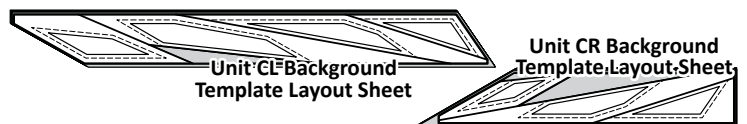
Step 1: Cut (12) 3-3/4" by 42" strips from Fabric C1. Stack the strips facing *right-side-up* into (2) stacks, (1) with (4) strips and the other with (8) strips. Position the *Unit CR Background Template Layout Sheet Sec. 2, 4, & 6, onto the stack of (4) strips and the Unit CL Background Template Layout Sheet on the stack with (8) strips.



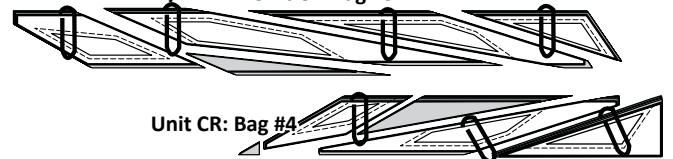
Step 2: Cut around the TLS on each strip set, then reposition the *Unit CR Background Template Layout Sheet by flipping it over and cut around it again.



Step 3: Restack the (8) pieces cut with the Unit CR Background TLS beneath the TLS, *right-side-up*. Do the same with the Unit CL Background TLS and pieces you cut with it.

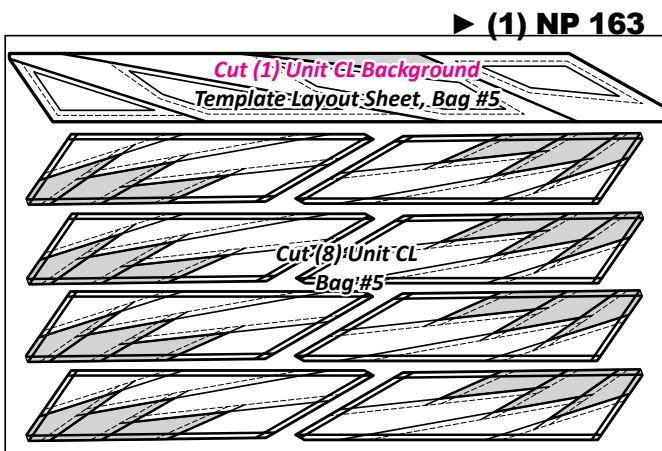
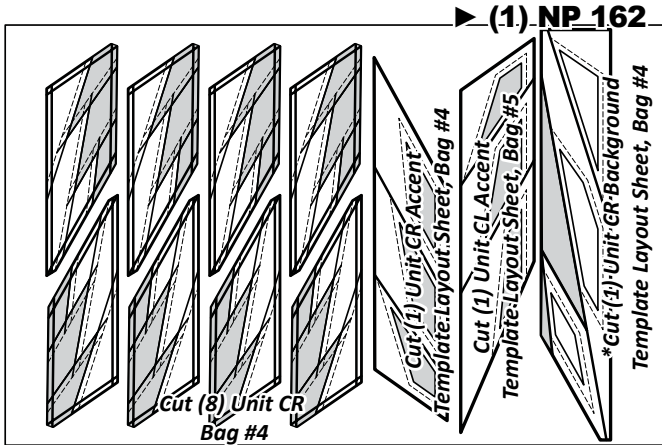
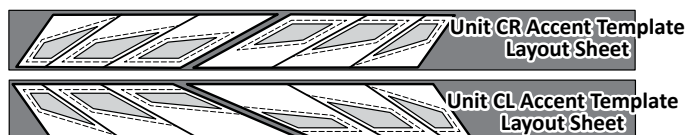


Step 4: The cutting is completed by slicing through the paper on each cut line to separate the individual sections. Paper clips are used to keep the fabric and template pieces together. Place the Unit CR Template Stacks into Bag #4 with the Unit CR Foundation Papers, and the Unit CL Template Stacks in Bag #5 with the Unit CL Foundation Papers. Unit CL: Bag #5



► Fabric C2: Accent TLS CL & CR

Step 1: Cut (8) 4" by 42" strips from Fabric C2. Stack the strips facing *right-side-up* into (2) stacks with (4) strips. Position the Unit CR Accent Template Layout Sheet onto (1) stack of (4) strips and the Unit CL Accent Template Layout Sheet on the other.



NOTE - *Correction in Original Newsprint: On NP 162, the Unit CR Accent Template Layout Sheet Sec. 2, 4, & 6, that is NOT hatched should be labeled as Unit CR Background. Refer to the graphic above and relabel the Template properly.

► Feather 2 Fabric Information:

The table in the next column includes yardage, fabric references, and which fabrics should go with which cutting templates to complete Units CL and CR. This table is your guide for not only selecting your own colors, but keeping you organized. Don't forget to cut a swatch of your chosen fabric to paste in the box in the Assigned Colors column! This will help you stay organized!

► Group C Color Layout

