

## Round 2: Cutting Instructions: Colors C2, C6, and C1: Bags #4 & #5

**Cutting the Strips:** You should have three fabrics, (Colors C2, C6, & C1) with Bags #4 and #5 from when you built the fabric charts. These fabrics are used to complete the piecing for the left and right B Units in Round 2.

The following strips are cut from each color. The strips are then used to complete the subcutting for the template layout sheets in Bags #4 & #5.

**Color C2, Background:** Cut (8) 4" by 42" strips across the width of the fabric.

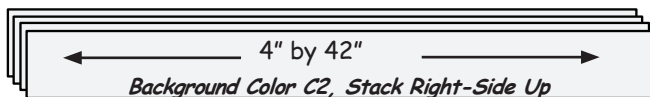
**Color C6, Accent Feather:** Cut (8) 4" by 42" strips across the width of the fabric.

**Color C1, Accent Center Star:** Cut (3) 2-1/4" by 42" strips across the width of your fabric.

### Background Fabric, Color C2 Subcutting Instructions

#### Unit BR: Background Template Layout Sheet, Bag #5

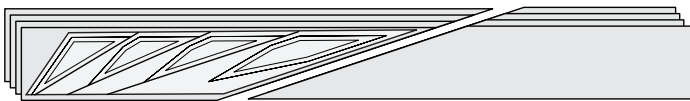
**Step 1:** Open and stack (4) of the 4" by 42" strips cut from Background Color C2, *right-side-up* into (1) stack.



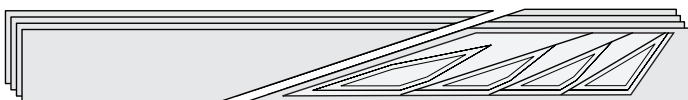
**Step 2:** Position the *Unit BR Background, Template Layout Sheet* as shown below onto the (4) strips.



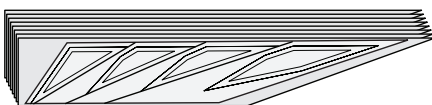
**Step 3:** Subcut (4) fabric pieces to match the size and shape of the template layout sheet as shown.



**Step 4:** Rotate the template layout sheet 180 degrees and reposition it onto the strips. Cut (4) more pieces.



**Step 5:** Center the (8) pieces you cut under the template layout sheet as shown.

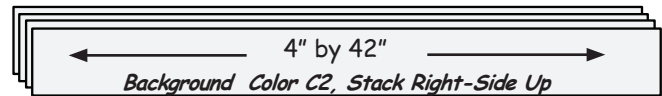


**Step 6:** Slice through the paper and fabric on Lines 1-3, in order. Clip the templates and fabric pieces together for each section and place them back into Bag #5 with the foundation papers for Unit BR.

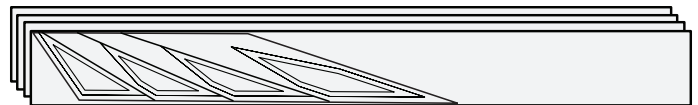


#### Unit BL: Background Template Layout Sheet: Bag #4

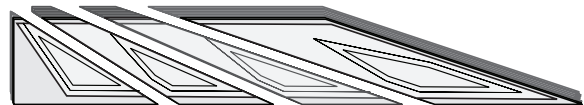
**Step 1:** Open and stack the (4) remaining 4" by 42" strips cut from Background Color C2, *right-side-up* into (1) stack.



**Step 2:** Use the *Unit BL Background, Template Layout Sheet* and cut (8) fabric pieces to match the size and shape of the template layout sheet. Repeat the previous steps, cut the first (4) pieces, then rotate and reposition the layout sheet to cut the last (4) pieces.



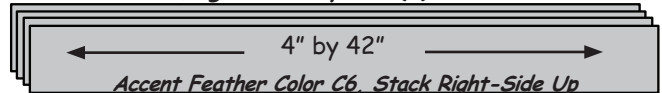
**Step 3:** Center the (8) pieces under the template layout sheet and slice through the paper and fabric on Lines 1-3 to separate each section. Clip the templates onto the fabric pieces and place them back into Bag #4 with the foundation papers for Unit BL.



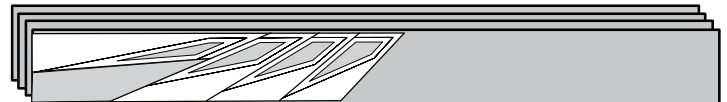
### Accent Feather Fabric, Color C6 Subcutting Instructions

#### Unit BR: Feather (Spike) Template Layout Sheet: Bag #5

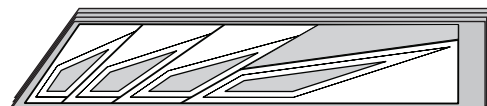
**Step 1:** Open and stack (4) of the 4" by 42" strips cut from Accent Color C6, *right-side-up* into (1) stack.



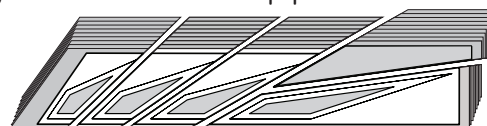
**Step 2:** Position the *Unit BR Feather (Spike), Template Layout Sheet* as shown below onto the strips. Subcut (4) fabric pieces to match the size and shape of the template layout sheet.



**Step 3:** Rotate the template layout sheet 180 degrees and reposition it onto the strips. Cut (4) more pieces.

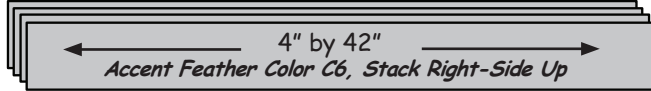


**Step 4:** Center the (8) pieces you cut under the template layout sheet and slice through the paper and fabric on Lines 1-4. Clip the templates onto the fabric pieces and place the pieces back into Bag #5 with the foundation papers for Unit BR.

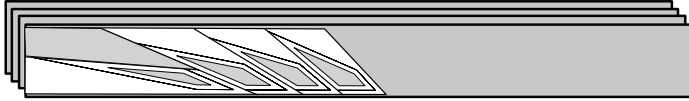


**Unit BL: Feather (Spike) Template Layout Sheet: Bag #4**

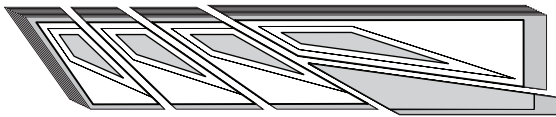
**Step 1:** Open and stack the (4) remaining 4" by 42" strips cut from Color C6, *right-side-up* into (1) stack.



**Step 2:** Use the *Unit BL Feather (Spike) Template Layout Sheet* and cut (8) fabric pieces to match the size and shape of the template layout sheet. Repeat the previous steps, rotate and reposition the layout sheet as needed to cut the (8) pieces.



**Step 3:** Center the (8) pieces under the template layout sheet as shown. Slice through the paper and fabric on Lines 1-4. Clip the templates onto the fabric pieces and place the pieces back into Bag #4 with the foundation papers for Unit BL.



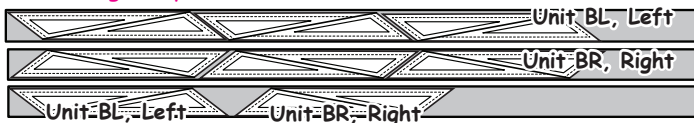
**Accent Center Star Fabric, Color C1 Subcutting Instructions**

**Unit BR & BL: Sec. 9 Center Star Template Layout Sheet: Bags #4 & #5**

1. Open and stack the (3) 2-1/4" by 42" strips cut from the Center Star, Accent Color C1, *right-side-up* into (1) stack.



2: Use the *Unit BR & BL Center Star Template Layout Sheets* and cut (4) fabric pieces to match the size and shape of each left and right layout sheet.



3. Slice through the paper and fabric on Line 1. Clip the templates and (8) fabric pieces together for each unit. Place the BL pieces in Bag #4 and the BR pieces into Bag #5.

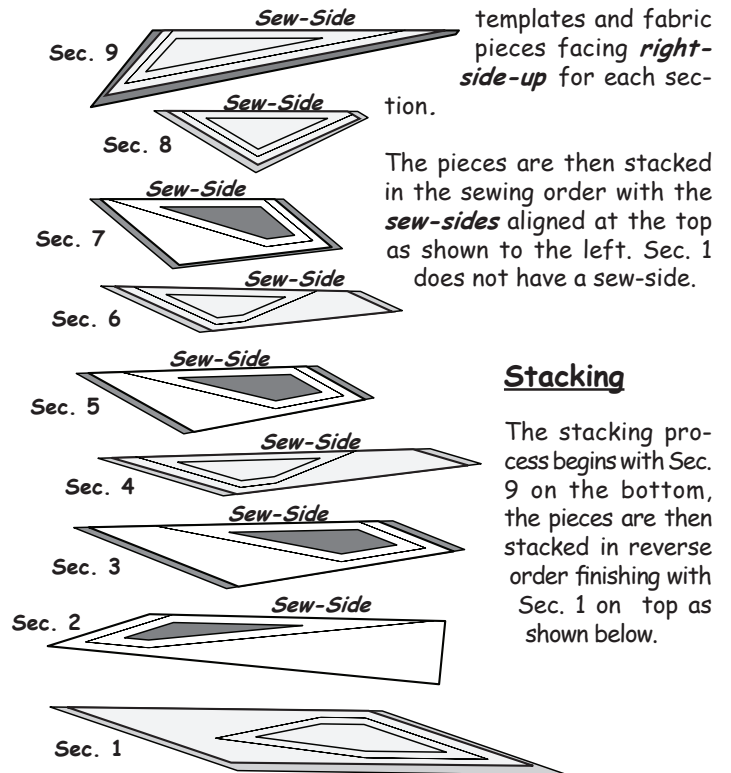


**Preparing and Stacking the Fabric Pieces for Foundation Paper Piecing Unit BR, Bag #5**

Before you begin paper piecing match the template and fabric pieces in Bag #5 up with the Sec. #s on the foundation papers. Position your pieces as follows facing *right-side-up*.

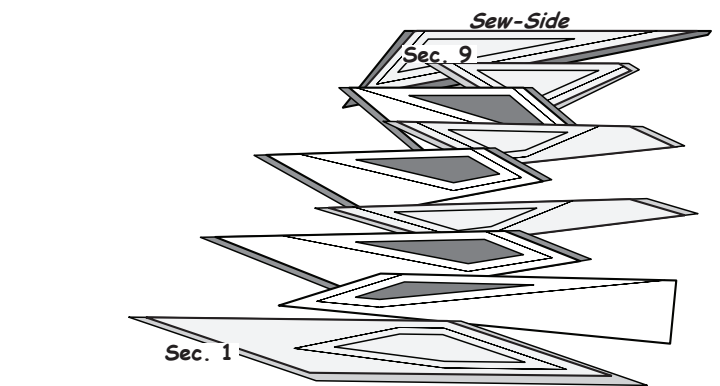
**Sorting**

Sort the pieces in chronological order on your table with the



**Stacking**

The stacking process begins with Sec. 9 on the bottom, the pieces are then stacked in reverse order finishing with Sec. 1 on top as shown below.



**Foundation Paper Piecing Unit BR, Bag #5**

**Step 1:** Place Unit BR *right-side-up* on your table and position as shown.

**Note:** Place the foundation paper onto a light table. Flip the foundation paper over and trace the dashed lines printed on the front side of the foundation paper, onto the backside of the paper.

**Step 2:** Find Sec. 1 on the foundation paper. Place a small amount of fabric glue on the *wrong-side* of the paper under Sec. 1.

**Step 3:** Position the first piece of fabric for Sec. 1 *wrong-side-up* on your table. Lift the foundation paper, slide the fabric under Sec. 1 and glue the first