

well worth the time you will save in making this quilt. Each time I publish a pattern, I usually have made several versions of each quilt top using different techniques. When I made the original quilt for this pattern, I designed small templates for each of the separate background pieces. Then, I started sewing the blocks together. I spent more time picking out seams than I did sewing. I found it very confusing trying to figure out which units to sew the background pieces onto in order to complete the quilt properly. Having designed two other patterns using cutout templates in the past, I decided to go back and re-figure the yardages and layout for this pattern using cutout templates. I was concerned that there might be considerable waste, but found the difference in yardage was less than two yards! On the other hand, the process saved several days of picking out seams and the finished quilt top came out hanging straight and laid very flat.

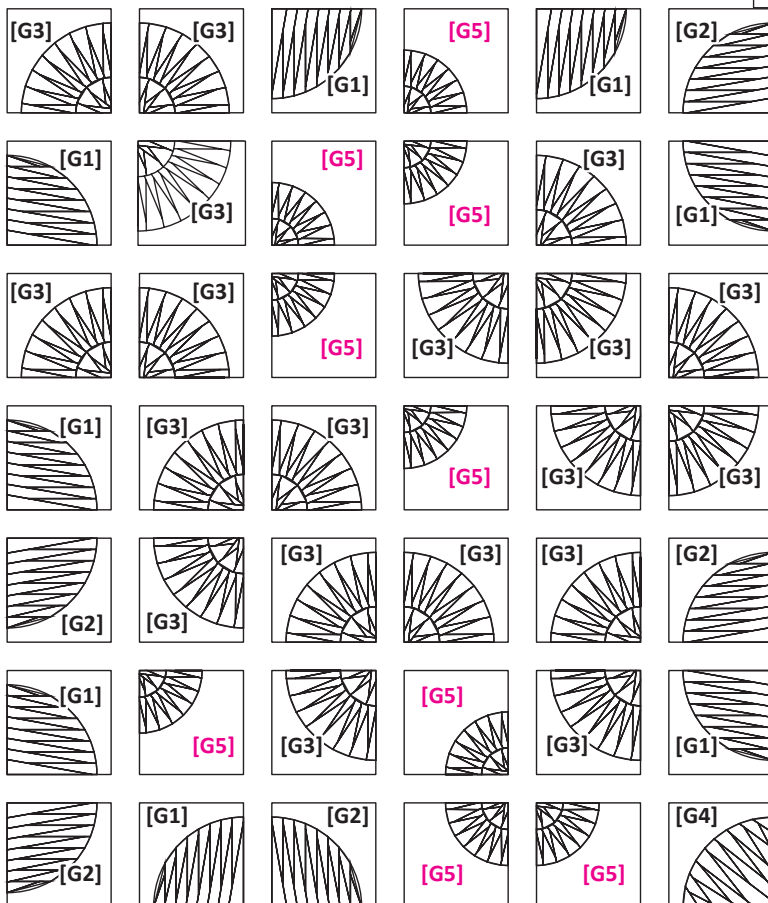
► **Step 1, Layer 1, Illustration 1:**

Find the Following Pieces: Layer 1 includes the following pieces.

- (33) B-1 Templates (Bag #8)
- (9) B-2 Templates (Bag #8)
- (19) of the Unit A/Unit B Pairs (Bag #1)
- (9) of the Unit C/Unit D Pairs (Bag #3)
- (8) Unit EL (Bag #6)
- (5) Unit ER (Bag #5)
- (1) Unit G (Bag #7).

Sewing T-Template B1: Sew (8) *T-Template B1* onto Units EL (Group 1 [G1]) and (5) *T-Template B1* to Unit ER (Group 2 [G2]) and (19) *T-Template B1* are sewn onto the Unit A/Unit B pairs (Group 3 [G3]). The last (1) *T-Template B1* is sewn onto the Unit G (Group 4 [G4]).

► **Illustration 1: Layer 1**



Sewing T-Template B2: Nine (9) B2-Units are sewn onto the Unit C/Unit D Pairs [G5].

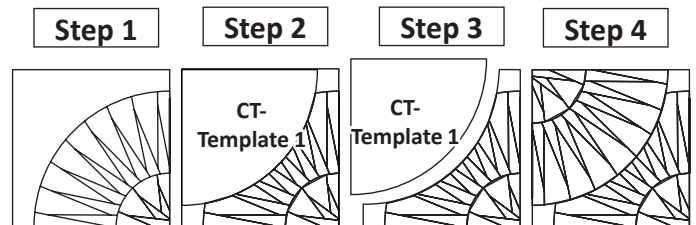
Curved Piecing: Pin both sides with two pins. Find and match the center point on both pieces. Gather up the outer edge of the top unit into your hand as mentioned before in the curved piecing section. Begin to pleating the top piece forcing it to match the curve on the bottom piece. Press all the curved seams toward the B1 and B2 background pieces.

► **Special note about the next four steps:**

My personal recommendation is to complete Steps 2 through 5 for each block shown in Illustration 1, one block at a time by cutting out one quarter-circle then replace the quarter circle with the replacement unit. When the first block is done then move onto the next block. This will avoid confusion keeping the blocks intact as you work through your second and third layers.

► **Step 2, Cutout Temps (CT-Temps 1, 2, & 3):**

Before moving on to the second layer, you need to use the cutout templates, CT-1, CT-2, and CT-3, to cut out a series of quarter-circle spaces from the first layer. These templates are found in Bag #8. The graphics below show the four steps for using the cutout templates.



Position the cutout template on the right side of the fabric as shown in the Cutout Graphics above, Step 2. Make sure the edges of the template and the edges of your block line up perfectly straight. Use your rotary cutter and carefully cut around the outside edge of the convex curve on your template. Lift the template and remove the quarter-circle fabric. The quarter-circle fabric is replaced with one of the following pieces.

CT-1 Template: The CT-1 Template is used to cut away the quarter-squares circles for the Unit A/Unit B Pairs and Units EL and ER. You will need to cut away a total of (16) cutouts:

- (9) cutouts are replaced with nine (9) Unit A/Unit B Pairs.
- (5) cutouts are replaced with (5) Unit ER. Make sure these are cut out of the blocks OPPOSITE of the matching Unit EL pieces.
- (2) cutouts are replaced with (2) Unit EL. Again, make sure you are pairing the Unit EL with the matching Unit ER!

CT-2 Template: The CT-2 Template is used to cut away the quarter-squares circles for:

- (19) Unit C/Unit D Pairs.

CT-3 Template: The CT-3 Template is used to cut away the quarter-circles for:

- (8) leftover Unit B.