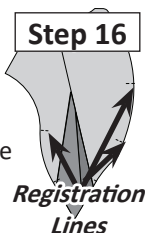


Step 16: Trim around Unit C on the exterior solid line. This will not only trim away the excess fabric and paper, but also trim away the thread ends from the basting stitches, making it easier to remove the threads after the placemat is assembled. Do not remove the papers at this time!



NOTE - Trimming Curved Units: When trimming the curved units, carefully roll the rotary cutter along the curved edge of the foundation paper. All the units in this pattern were drafted and designed using curved seams. If you choose not to use the Registration Lines as described above, you can always simply mark these on the fabric with a marking pencil, but stitching the registration lines works best.

CUTTING INSTRUCTION: UNIT D

The cutting options for Unit D have been divide by colorway. [Option 1: =Colorway 1]. [Option 2:= Colorway 2, page 11].

Option 1, Unit D: Background Fabric A4 and Accent Fabric A5 are used to complete the strip piecing for Unit D. Both Fabrics A4 & A5 have been divided into (3) colors so we could repeat the (6) fabrics previously used to complete Unit C.

Unit D Yardage, Bag #2: Make (12) Total		
OPTION 1, FABRIC #	YARDAGE (OR) STRIP SIZE	ASSIGNED COLOR
COLORWAY 1 (Make 12 Petals)*		
Background Fabric A4:a Strip 1 and Strip 3	1/4 Yd (or) 7-1/4" x 42" Strip	FABRIC SWATCH
Background Fabric A4:b Strip 1 and Strip 3	1/4 Yd (or) 7-1/4" x 42" Strip	FABRIC SWATCH
Background Fabric A4:c Strip 1 and Strip 3	1/4 Yd (or) 7-1/4" x 42" Strip	FABRIC SWATCH
Accent Fabric A5:a Strip 2	1/4 yd (or) 5" x 42" Strip	FABRIC SWATCH
Accent Fabric A5:b Strip 2	1/4 yd (or) 5" x 42" Strip	FABRIC SWATCH
Accent Fabric A5:c Strip 2	1/4 yd (or) 5" x 42" Strip	FABRIC SWATCH

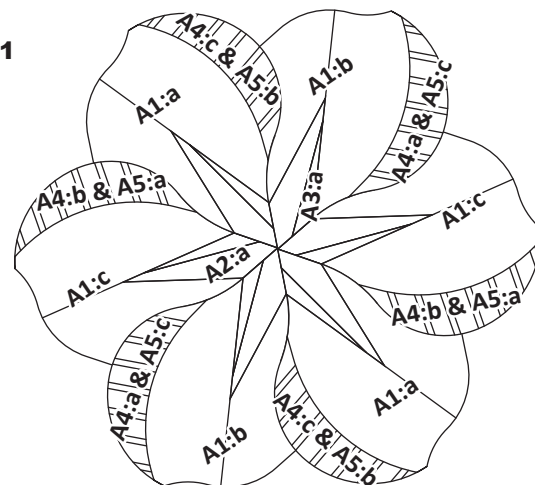
Cut and paste a small fabric swatch onto each of the Units as shown below. Then proceed to the fabric chart and cut the fabric according to the **inches** shown in the **Yardage or Strip Size Column** from each fabric and place the sub-cut yardage into the noted bag.

► COLORWAY 1: (Purple Flower)



NOTE - * In COLORWAY 1, we used the same fabrics for Fabrics A4:a and A5:b, then for A4:b and A5:c, and finally for A4:c and A5:a. We added 7-1/4" to 5" and got 12-1/2". So, the total yardage required for both is 3/8 Yard.

► Option 1, Colorway 1



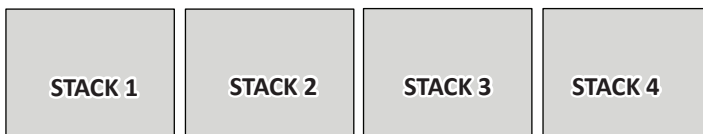
BAG #2 CUTTING INSTRUCTIONS, COLORWAY 1, OPTION 1

► Fabrics A4:a to A4:c: Strips 1 and 3

Step 1: Stack the (3) 7-1/4" x 42" strips cut from Fabrics A4:a to A4:c, facing **right-side-up** in order the following order. Color A4:c on the bottom, A4:a in the middle, and color A4:b on the top.

Stack right-side-up in reverse order starting with Fabric A4:c bottom, A4:a middle, A4:b top.

Step 2: Cut the strips into (4) stacks of 7-1/4" x 10-1/2" strips. Do not change the stacking order.

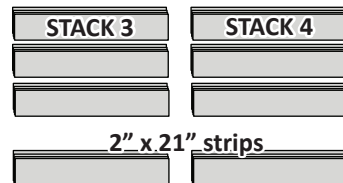


Step 3: Subcut (4) 1-3/4" x 10-1/2" strip sets from Stacks 1, & 2. Label the (8) sets as Strip 3. You should have three pieces in each strip set, one each of color, A1:c, A1:a, A1:b.

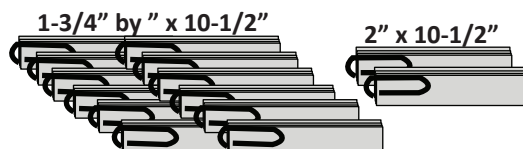


NOTE - If the strip measurements don't come out perfect don't worry, the strips will be plenty big enough!

Step 4: Subcut (3) 1-3/4" x 10-1/2" strip sets from Stacks 3 & 4, label the (6) sets as Strip 3. The remaining (2) strip sets should measure about 2" by 10-1/2". Label these sets as Strip 1.



Step 5: Clip each of the strips together with a paper clip, maintaining the fabric order and place back into Bag #2. Keep the 2" set separate from the rest.



► **Fabrics A5:a to A5:d: Strip 2**

Step 1: Remove Fabrics A5:a to A5:c from Bag #2. Stack the fabrics *right-side-up* in the following order:

1. Fabric A5:b on Bottom, then
2. Fabric A5:c, then
3. Fabric A5:a on the Top.

**Stack right-side-up,
A5:b bottom, A5:c middle, and A5:a top.**

Step 2: Subcut the fabric strips into **(4)** stacks of 5" x 10-1/2" strips.



Step 3: Finally, sub-cut Stack 1, 2, & 3 into **(4)** sets of 1-1/4" x 10-1/2" strips.

Step 4: Sub-cut Stack 4 into **(2)** sets of 1-1/4" x 10-1/2" strips. Reserve the remaining strip for any errors or discard.



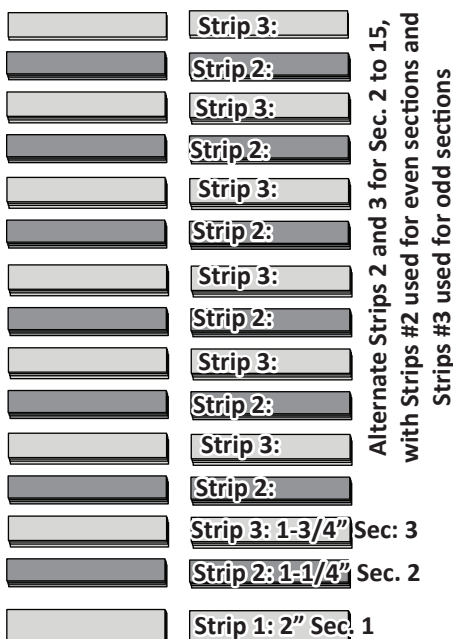
Step 5: Clip all the stacks together and place back into Bag #2.

SORTING AND STACKING THE STRIPS

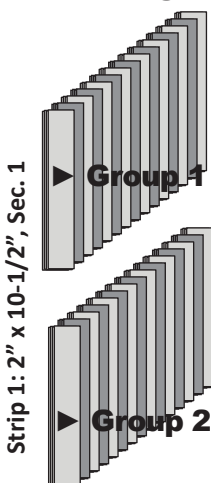
To prepare your strips for strip piecing, arrange the strips in the following order. You will need to build **(2)** sets. One set is for the papers in Group 1 and the other set is for the papers in Group 2. The stacking order in each group starts with the 1-3/4", **Strip 3** on the bottom for Sec. 15, then the 1-1/4", **Strip 2** for Sec. 14. Continue stacking, alternating strips 2, & 3, (7) each. The stacking is finished by placing **Strip 1**, which is 2" wide on the top of your pile. **Strip 1** is sewn under Sec.1 on the foundation paper.

► Sorting

Sec. 15

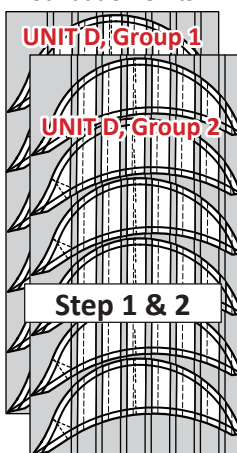


► Stacking



FOUNDATION STRIP PIECING UNIT D

Step 1: Remove the foundation papers from Bag #2. Using your rotary cutter separate each foundation paper into **(3)** sets of **(2)** Foundation Units.



NOTE - The papers are cut apart for Piecing option 1. This was done so we could alternate the colors on each of the flower instead of keeping them the same color.

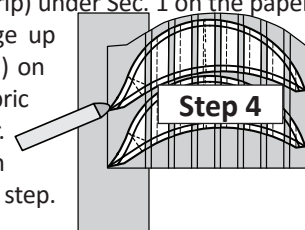

Step 2: Number the papers in each group. **Group 1:** 1, 2, & 3. **Group 2:** 1, 2, & 3. Place the papers in each Group with one *Strip Set*.

Step 3: Trace Line 2 on the backside of each paper in Groups 1-3. This line is used to line your first set of strips up to in Steps 4 and 5 below.


Fabric Placement: The fabrics in Groups 1 & 2 are paired with the papers in each group.

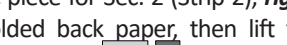
1. Fabric A4:b & A5:a are paired with Paper #1 in Groups 1 & 2.
2. Fabric A4:a & A5:c are paired with Paper #2 in Groups 1 & 2.
3. Fabric A4:c & A5:b are paired with Paper #3 in Groups 1 & 2.

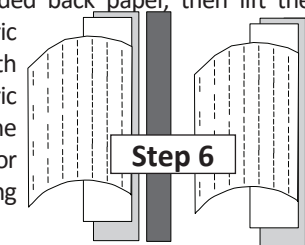
Step 4: Find Sec. 1 on the backside of the foundation paper. Adhere a small amount of fabric glue on the backside of the paper under Sec. 1. Position Strip #1, (2" strip) under Sec. 1 on the paper wrong-side up, match the strip edge up with Line 2 (the one you just traced) on the paper. The wrong-side of the fabric is glued to the backside of the paper. Repeat Step 1 for each foundation unit 1-6 before you go on to the next step.



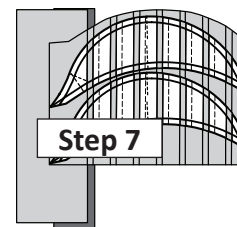
Step 5: Place the fold template over the top of Sec. 1. Line the edge up with the solid black line marked Line 1. Fold the paper back over the top of the fold template. This you leave you a 1/4" seam allowance showing along the edge of the paper.

 **Step 6:** Place the fabric piece for Sec. 2 (Strip 2), *right-side-up* next to the folded back paper, then lift the foundation paper and slide the fabric under Sec. 2. Line the sew-side up with the edge of Strip 1. Make sure the fabric extends beyond the boundaries of the dashed lines for Sec. 2. Repeat **Step 6** for each foundation paper before moving onto the next step.

 **Step 6**

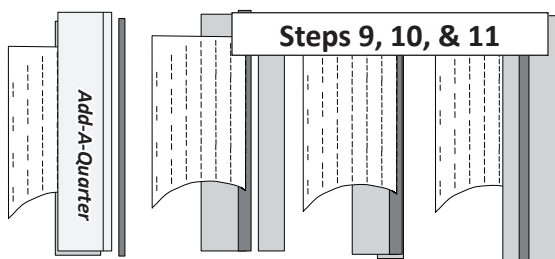


Step 7: Open up the foundation paper and sew on Line 1. The stitches should start and stop about 1/8" past the beginning and the end of each paper unit. Complete the sewing on each Unit before moving onto the next step.



Step 8: Loosen the glue under Sec. 1, then press the fabric pieces open on the backside of each paper. Repeat Step 8 for all papers before moving on to Step 9.

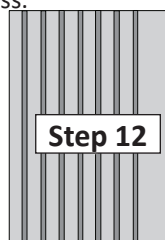
Step 9: Position the fold template over the top of Sections 1 and 2, lining the edge up with Line 2. Fold the paper back over the fold template. Then, position the **Add-A-Quarter** ruler along the folded edge and trim away the excess fabric.



Step 10: Position the third fabric piece **right-side-up** next to the paper. Lift the paper and slide the fabric under Sec. 3 in position.

Step 11: Open the paper, sew on Line 2 and press.

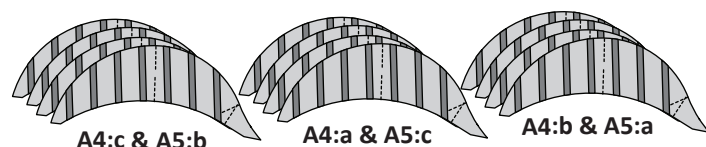
Step 12: Continue adding the remaining sections in this manner until the paper piecing is completed. From the front-side the strip pieced sections will look like the graphic to the left.



Step 13: Before trimming, find the (RP) Registration Lines printed on your papers around the perimeter of Unit D. Using a basting stitch of at least 2.8, sew through the paper and fabric on the dotted Lines to mark them.

It is easiest to just start at the top, sew to the end of the first RP line you get to, then pick up your needle and sew to the next. Then, you can snip the threads between and when you trim the papers apart, all the excess threads will be clipped away nicely. This discourages you from pulling on them later.

Step 14: It is now time to trim around each individual Unit D on your Strip Piecing paper. Trim around Unit D on the exterior solid line. This will not only trim away the excess fabric and paper, but also trim away the thread ends from the basting stitches, making it easier to remove the threads after the placemat is assembled. Do not remove the papers at this time!



NOTE - Trimming Curved Units: When trimming the curved units, carefully roll the rotary cutter along the curved edge of the foundation paper. All the units in this pattern were drafted and designed using curved seams. If you choose not to use the Registration Lines as described above, you can always simply mark these on the fabric with a marking pencil, but stitching the registration lines works best.

BAG #3 CUTTING INSTRUCTIONS, COLORWAY 2, OPTION 2

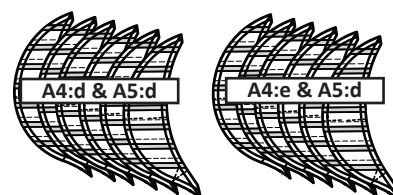
Unit D, Option 2 was designed for strip piecing (6) unit pieces without cutting the papers apart. Fabric A4:=(2) Background Fabrics A4:d & A4:e Fabric A5:=(1) Accent Fabrics A5:d.

Unit D Yardage, Bag #3: Make (12) Total

OPTION 2, FABRIC #	YARDAGE (OR) STRIP SIZE	ASSIGNED COLOR
<u>COLORWAY 2:a & 2:b (Make 12 Petals)*</u>		
Background Fabric A4:d Strip 1 and Strip 3	1/4 Yd (or) 7-1/4" x 42" Strip	FABRIC SWATCH
Background Fabric A4:e Strip 1 and Strip 3	1/4 Yd (or) 7-1/4" x 42" Strip	FABRIC SWATCH
Accent Fabric A5:d** Strip 2	3/8 yd (or) 10" x 42" Strip	FABRIC SWATCH

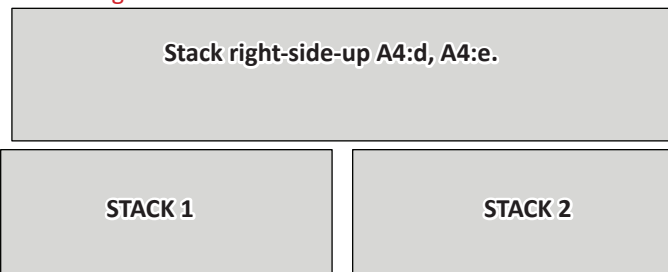
► COLORWAY 2: (Blue Flower)

NOTE - Color Layout
Provide Back Cover.

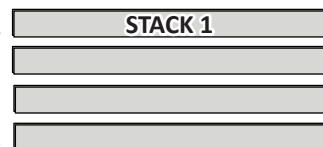


Fabrics A4:d to A4:e: Strips 1 and 3

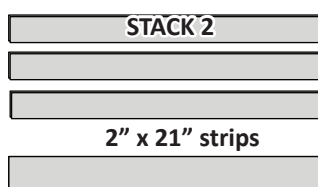
Step 1: Stack the (2) 7-1/4" x 42" strips cut from Fabrics A4:d & A4:e, facing **right-side-up**. The stacking order does not matter. Subcut the strips into (2) 7-1/4" x 21-1/2" strips. Do not change the stacking order.



Step 2: Subcut (4) 1-3/4" x 21" strip sets from Stack 1. Label these sets as **Strip 3**. You should have two pieces in each strip set, one each of color, A4:d, A4:e.



NOTE - If the strip measurements don't come out perfect don't worry, the strips will be plenty big enough!



Step 3: Subcut (3) 1-3/4" x 21" strip sets from Stack 2, label the sets as **Strip 3**. The remaining strip sets should measure about 2" by 21". Label this set as **Strip 1**.

Step 4: Clip each strip set together with a paper clip, and place back into Bag #3. Keep the 2" set separate from the rest.

► Fabrics A5:d Strip 2

Step 1: Remove Fabric A5:d Bag #3. Cut (2) 5" x 42" strips. Stack the fabrics *right-side-up*.

Stack right-side-up,
A5:d

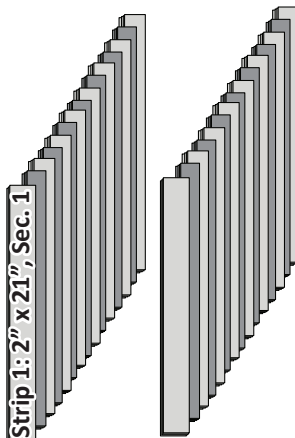
Step 2: Subcut (2) 5" x 21" pieces. Then sub-cut both stacks into (4) strip sets measuring 1-1/4" x 21". Label the sets as *Strip 2*. Discard the last set. You only need (7) strip sets.



Step 3: Clip all the stacks together and place back into Bag #3.

■ SORTING AND STACKING THE STRIPS

To prepare your strips for strip piecing, arrange the strips in same order as you did for Option 1. The only difference is the strip length. *You will need to build (2) sets, alternating Strips 3 & 2 and ending with Strip 1 on top for Sec.1.*

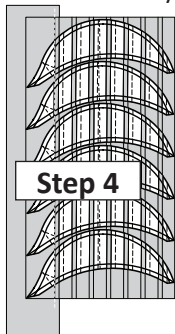


■ FOUNDATION STRIP PIECING UNIT D

Step 1: Remove the foundation papers from Bag #2. The papers are not cut apart for the paper Piecing Option 2.

Step 2: Number the papers in each group. Group 1, Group 2.

Step 3: Trace the Line 2 on the backside of each paper. This line is used to line your first set of strips up to in Steps 4 and 5 below.



Step 4: Find Sec. 1 on the backside of the foundation paper. Adhere a small amount of fabric glue on the backside of the paper under Sec. 1, then line the edge of Strip 1, (2" strip) on the backside of the paper under Sec. 1, to the Line 2 (the one you just traced) on the backside of the paper. The wrong-side of the fabric is glued to the backside of the paper. Repeat Step 4 for each foundation paper.

Step 5: Place the fold template over the top of Sec. 1. Line the edge up with the solid black line marked Line 1. Fold the paper back over the top of the fold template. This you leave you a 1/4" seam allowance showing along the edge of the paper.

Step 6: Place the fabric piece for Sec. 2 (Strip 2), *right-side-up* next to the folded back paper, the foundation paper and

slide the fabric under Sec. 2. Line the sew-side up with the edge of Strip 1.

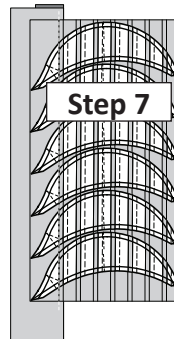
Make sure the fabric extends beyond the boundaries of the dashed lines for Sec. 2. Repeat **Step 6** for each foundation paper before moving onto the next step.

Step 6

Step 7: Open the foundation paper and sew on Line 1. The stitches should start and stop about 1/8" past the beginning and end of each paper unit.

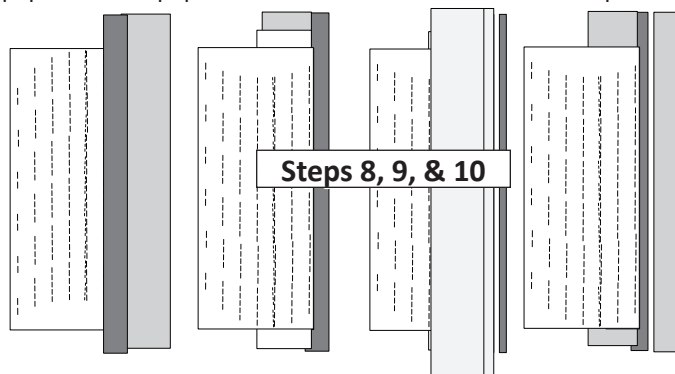
Step 8: Loosen the glue under Sec. 1, then press the fabric pieces open on the backside of each paper.

Repeat Step 8 for all papers before moving on to Step 9.



Step 9: Position the fold template over the top of Sections 1 and 2, lining the edge up with Line 2. Fold the paper back over the fold template. Then, position the *Add-A-Quarter* ruler along the folded edge and trim away the excess fabric.

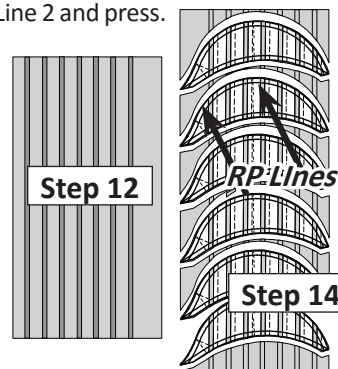
Step 10: Position the third fabric piece *right-side-up* next to the paper. Lift the paper and slide the fabric under Sec. 3 in position.



Step 11: Open the paper, sew on Line 2 and press.

Step 12: Continue sewing adding the strips under each sections until the paper piecing is completed.

Step 13: Before trimming, find the (RP) Registration Lines printed on your papers. Using a basting stitch sew through the paper and fabric on the dotted Lines to mark them.



Step 14: Trim around the Unit D foundation Units. Sort the colors into two groups. Colorway 2:a and Colorway 2:b.
* Refer to the Center Page Flower Layouts.

A4:e & A5:d
A4:d & A5:d
A4:d & A5:d
A4:e & A5:d
A4:d & A5:d
A4:d & A5:d

► Colorway 2:a

A4:e & A5:d
A4:e & A5:d
A4:d & A5:d
A4:e & A5:d
A4:e & A5:d
A4:d & A5:d

► Colorway 2:b

Step 15: Do not remove the papers at this time!