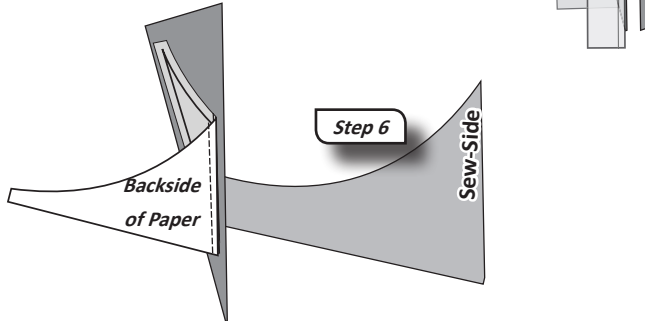
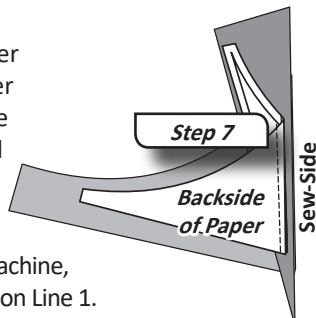


**Step 5:** Place the *Add-A-Quarter* ruler next to the folded back section on the paper lip-side down and trim the fabric with your rotary cutter. This leaves you with a quarter-inch seam allowance.

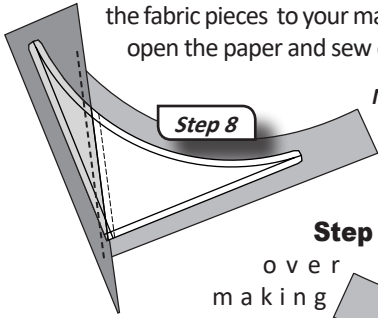
**Step 6:** Remove both the *Add-A-Quarter* and fold template. Place the fabric piece for Sec. 2, *right-side-up* next to the folded back paper as shown.



**Step 7:** Lift the foundation paper and slide the fabric for Sec. 2 under the foundation paper. Line up the sew-side up with the trimmed quarter-inch seam.



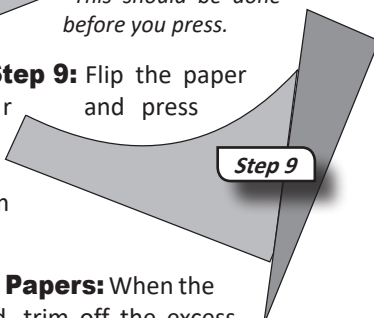
**Step 8:** Take the paper and the fabric pieces to your machine, open the paper and sew on Line 1.



**NOTE - Loosen the Glue:** Loosen the glue under Sec. 1 at this time. This should be done before you press.

**Step 9:** Flip the paper over and press

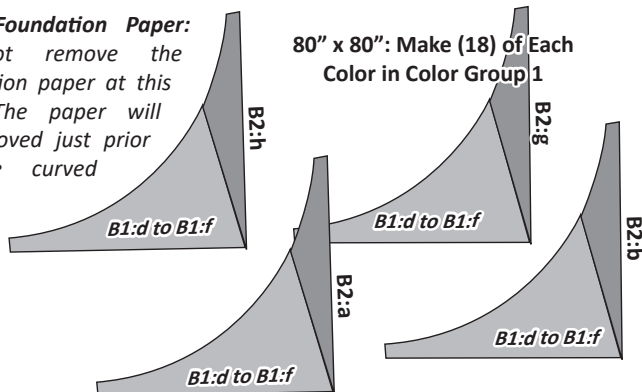
making sure you don't press any folds into the seam lines.



**Trimming the Foundation Papers:** When the foundation piecing is finished, trim off the excess fabric and foundation paper around the edge of each unit. Don't forget the Smart Corners!

**NOTE - Foundation Paper:** Do not remove the foundation paper at this time. The paper will be removed just prior to the curved piecing.

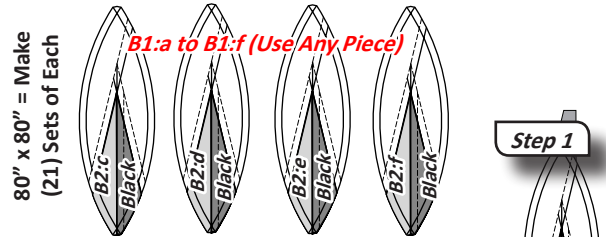
80" x 80": Make (18) of Each Color in Color Group 1



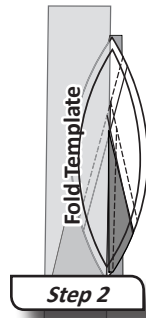
**NOTE - Various Sizes:** The number of blocks you make will vary based on the size quilt you chose to make.

## FOUNDATION PAPER PIECING: UNIT M: BAG #5

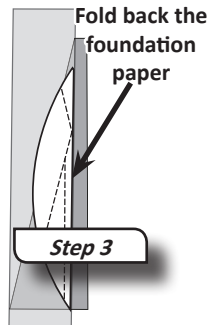
Reference the Cutting Table on Page 10 (**LINE 5**) to determine the number of M Units you will need to make. (For the 80" x 80" Quilt, this is **(84)** Units).



**Step 1:** Place the foundation paper *printed-side-up* on your table. Now, place a small amount of fabric glue on the back-side of the paper under Sec. 1. Place the first piece of fabric for Sec. 1 *wrong-side-up* onto your table, then slide the fabric under the foundation paper and center the fabric, under Sec 1.

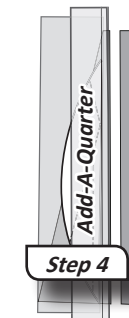


**Step 2:** Place the fold template over Sec. 1, lining the edge up with Line 1.



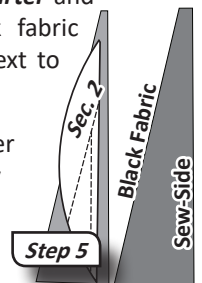
**Step 3:** Fold the foundation paper back over the top of the fold template.

**Step 4:** Place the *Add-A-Quarter* ruler next to the folded back section on the paper lip-side down and trim a quarter-inch seam allowance.



**Step 5:** Remove the *Add-A-Quarter* and fold template. Place the black fabric piece for Sec. 2 *right-side-up* next to the folded back paper as shown.

**Step 6:** Lift the foundation paper and slide the black fabric directly under Fabric #1. Line up the sew-side up with the trimmed quarter-inch seam.

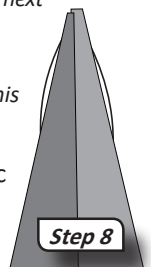


**Step 7:** Lift both fabric pieces to your machine along with the paper. Open the paper and sew on Line 1. Start at the beginning of Line 1 and sew to the bottom of Line 1. Always extend the sewing lines past the seam allowances.

**NOTE - Thread Management Tip:** If you sew through the seam allowance just past the dashed line on the foundation paper, the loose will automatically be trimmed from the backside of the paper when you trim your next seam allowance with the *Add-A-Quarter* ruler.

**NOTE - Loosen the Glue:** Loosen the glue under Sec. 1 at this time. This should be done before you press.

**Step 8:** Flip the paper over and press the fabric pieces to the open position on the right-side of the fabric.



## CHAPTER 3: ASSEMBLY OF THE WEDDING STAR QUILT

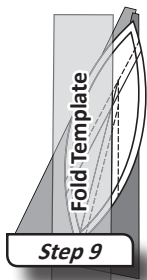
The Quilt Assembly Instructions starting on [Page 15](#), provide more detail for the nine steps below, including pressing directions and detailed graphics.

1. *Part 1, Unit Block 1: Sew Unit A (Bag #1) to Unit CDS (Bag #3), then sew these to Unit M (Bag #5).*
2. *Part 2, Unit Block 2: Sew the remaining Unit A (Bag #1) to Unit M (Bag #5). These pieces are used to complete Block 7.*
3. *Part 3, Unit Block 3: Sew Unit CMS (Bag #4) to Unit B (Bag #2).*
4. *Part 4, Unit Block 4: Add the Corner Squares to Block 3.*
5. *Part 5, Unit Block 5: Sew the Corner Squares onto the remaining Unit B (Bag #2) These pieces are used to complete Block 8.*
6. *Part 6, Unit Block 6: Sew Block 1 [Unit A/Unit CDS/Unit M] to Block 4 [Unit CMS/Unit B].*
7. *Part 7, Unit Block 7: Sew Block 2 [Unit A/Unit M] to Block 4 [Unit CMS/Unit B].*
8. *Part 8, Unit Block 8: Sew Block 5 [Unit B] to Block 1 [Unit A/Unit CDS/Unit M].*
9. *Assemble the Unit Block Groups. Illustration 1-5 Pages 10 & 11.*

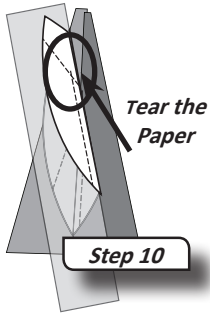
### GENERAL TIPS FOR REMOVING THE PAPER

**Foundation Paper:** You may be tempted to remove all of the foundation paper from the backside of each unit once the units are completed, but in some cases it is best not to remove the paper. The foundation paper serves as a stabilizer in the process of sewing the units together and should not be removed until instructed to do so. I have outlined which sections on each unit should have the papers removed and which ones should have the paper left attached to assist in the quilt assembly process of 'Building the Blocks'. If you follow these recommendations, as you build the units it will improve your accuracy and will minimize the overall time you spend piecing the quilt together.

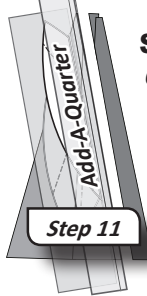
**When Removing the Paper:** Place your finger at the end of each seam. Pinch the fabric and paper at the beginning of your stitches. Pull back on the paper and begin tearing the paper away from the fabric. Start with the last piece sewn onto the foundation paper and remove the paper in descending order finishing with the first piece.



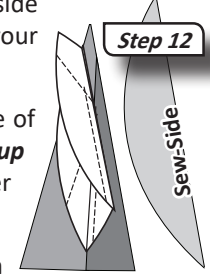
**Step 9:** Place the fold template over the top of Sec. 1 and 2. Line the edge up with Line 2.



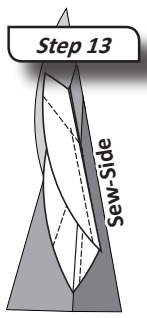
**Step 10:** Lift the paper and tear the fabric loose from the paper at the beginning of Line 2. This allows the fabric to lay flat, making it easier to fold the paper back over the fold template.



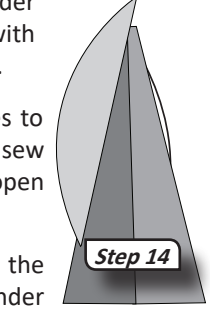
**Step 11:** Place the **Add-A-Quarter** ruler next to the folded back section on the paper, lip-side down, and trim the fabric with your rotary cutter.



**Step 12:** Place the next piece of fabric for Sec. 3, **right-side-up** next to the folded back paper as shown.



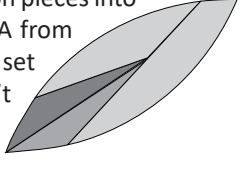
**Step 13:** Lift the foundation paper and slide the fabric under Sec. 3. Line the sew-side up with the trimmed quarter-inch seam.



**Step 14:** Take the fabric pieces to your machine, open the paper, sew on Line 2, and press the fabrics open on the backside of the paper.

**Continue:** To finish the unit, the last piece of fabric is positioned and sewn under Sec. 4.

**Trimming the Foundation Papers:** When the foundation piecing is finished, trim off the excess fabric and paper. The Melon Template from the Creative Grids Ruler Set can be used to assist with the curved trimming. Set aside (3) Melon Units from each of the (4) colors groups. Place these (12) Melon pieces into the same sub-bag that included (12) Unit A from Ring Color Sets 8, 9, and 10, which were set aside in Chapter 1 of the pattern. Don't forget to trim the Smart Corners, then **REMOVE** the Foundation Papers!



### GENERAL CURVED PIECING EXAMPLE UNIT A TO A MELON

The following graphics show the general steps for curved piecing .you will use to complete the piecing for this quilt. We have graphics using Unit CDS and Unit A to create the first part of Unit Block 1. All other curved units use the same general approach.

**Quarter-Inch Seams:** Sewing a quarter-inch seam allowance is very important when sewing the curved seams. If your seam allowances are not accurate, you will notice some distortion in the sizes of your blocks as you sew the squares together. Sewing with a quarter-inch foot will make this job a lot easier.

**Glue Pen:** I use a fabric glue pen to secure the raw edges of the curved seams together before sewing the **quarter-inch** seams. This prevents stretching the fabric along the bias edge while sewing the curved seams.

**Smart Corners:** At this point in assembly, Smart Corners show you how great they really are! When you lay each of your units on top of the pieces below for curved piecing, all of the Corners can be lined up perfectly so that no Dog Ears exist. You get Perfect Placement every time!

