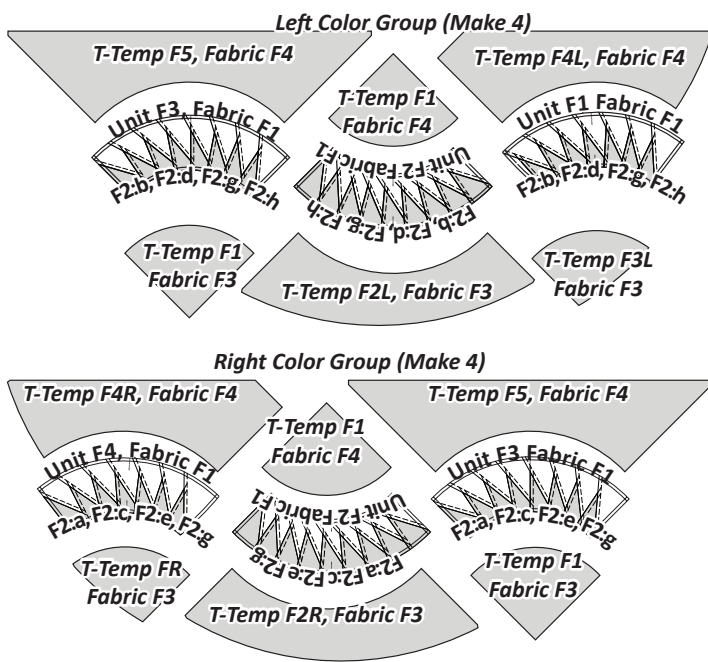


► Group F, Color Layout



Note: Units are shown from the Back and T-Templates from the Front in the Color Layout Graphic. When you lay out the final units, all from the front side, Group 1 and Group 2 will switch places!

GROUP F SUB-CUTTING INFORMATION

Step 1: From Fabric F1, sub-cut the following strips and place them into the appropriate bags:

- (2) 6" x 42" strips for Bags #13, Unit F1
- (4) 6" x 42" strips for Bag #14, Unit F2
- (4) 6" x 42" strips for Bag #15, Unit F3
- (2) 6" x 42" strips for Bag #16, Unit F4

Step 2: From EACH Fabric F2:a to F2:h, sub-cut the following strips and place them into the appropriate bags:

- (2) 6" x 42" strips per fabric and place them in the following bag:
 - Place (1) strip from F2:b, F2:d, F2:f, F2:h into Bag #13 (Left Color Group)
 - Place (1) strip from each fabric F2:a - F2:h into Bag #14. Pieces will be placed in Bag #15, later
 - Place (1) strip from F2:a, F2:c, F2:e, F2:g into Bag #16 (Right Color Group)

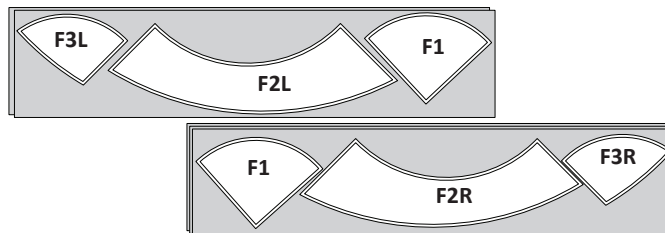
Step 3: From Fabric F3, sub-cut (8) 9" x 42" strips and place these into Bag #17.

Step 4: From Fabric F4, sub-cut (12) 8" x 42" strips and place these into Bag #18.

CUTTING INSTRUCTIONS: BAG #17 TEMPLATES F1, F2L, F2R, F3L, & F3R

Step 1: Remove the (8) 9" x 42" strips cut from Fabric F3 along with the F1, F2L, F2R, F3L, and F3R Templates in Bag #17.

Step 2: The strips are stacked *right-side-up*, into two groups of (4) strips. Position the three templates onto your strips as shown. Cut (4) pieces for each template.



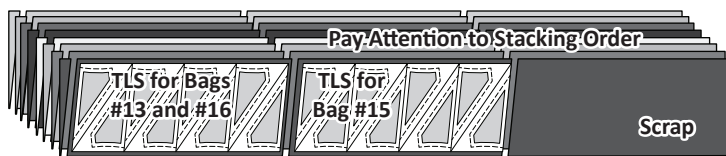
Step 3: Clip the fabric and paper templates together and place pieces back into Bag #17. Template F1 is re-used in Bag #18.

NOTE - Keep Your Templates! Do not lose or discard these templates at this point! The templates are marked with RP Lines and you will need to mark these on your fabrics later in the pattern and then sew 1" RP lines before you can complete the assembly.

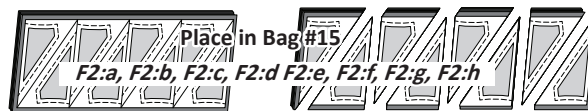
CUTTING INSTRUCTIONS: BAG #13 TO BAG #16: UNITS F1, F3, & F4

Step 1: Remove the (8) 6" x 42" strips cut from Fabrics F2:a to F2:h in Bags #13 and #16 along with both Unit F1, F3, & F4 Accent Template Layout Sheets. The fabric strips are stacked facing *right-side-up*, with the strips in Bag #13 placed on the top of the stack and those in Bag #16 on the bottom.

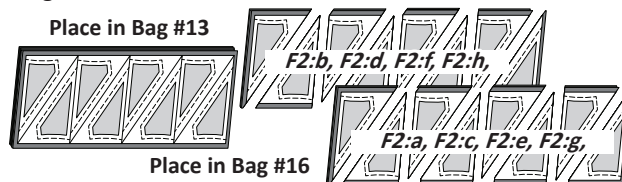
Step 2: Position the layout sheet as before onto your strips and cut two stacks of (8) pieces.



Step 3: Maintain the (2) stacks of (8) pieces and position (1) TLS onto each stack. Cut on the Cut Lines to separate the pieces. Paper clip the edges before cutting. Place the complete stacks cut with one of the TLS into Bag #15 to be sewn with Unit F3.



Step 4: Split the remaining stack, by color (placing the (4) fabrics from F2:b, F2:d, F2:f, and F2:h, in that order, back into Bag #13 with the Template. Place the (4) Fabrics cut from F2:a, F2:c, F2:e and F2:g back into Bag #16.



NOTE - The Bag #16 stacks will not have Templates so, you may want to label them Temp F3 and mark the Sew-Sides before you place them into their bags.

Step 5: Remove the (8) 6" x 42" strips cut from Fabric F1 that were previously placed in Bags #13, #15, and #16 along with both Unit F1, F3, & F4 Background Template Layout Sheets and the single template for Unit F1, Sec. 1 Temp 1 in Bag #1. The fabric strips are stacked *right-*