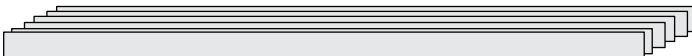


Background Fabrics: Cut the required number of 2-1/2" strips, from each of the background fabrics listed on the chart. Reserve the leftover fabrics for other Group Chapters.

Step 4: Stack and cut (5) 2-1/2" by 42" strips each from Fabric B1. Set these aside.



Step 5: Stack and cut (6) 2-1/2" by 42" strips each from Fabric B2. Set these aside.



Step 6: Stack and cut (4) 2-1/2" by 42" strips each from Fabric B3, B4, B5, and B6. Set these aside.



► Preparing the Strips:

Step 1: The strips are now stacked facing *right-side up* into three stacks of (9) Strips. Reference Illustration 1, 2, & 3 below. When you are done stacking you should have:

- (3) stacks each of the Accent Strips, Group 1, Group 2, & Group 3.
- (3) stack each of the Background Strips, Group 1, Group 2, & Group 3.

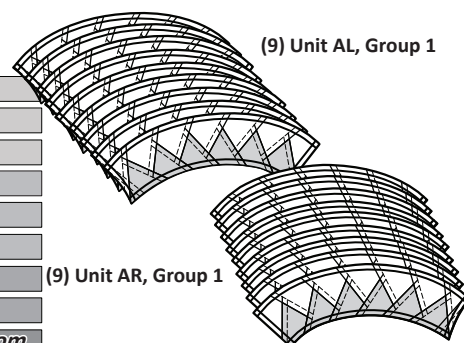
► Illustration 1, Strip Group 1 (Pairs 1-9)

GROUP 1, ACCENT

| | |
|--------------------------|---------------|
| <i>Fabric A1 Blue</i> | <i>Top</i> |
| <i>Fabric A1 Blue</i> | |
| <i>Fabric A1 Blue</i> | |
| <i>Fabric A2 Mint</i> | |
| <i>Fabric A2 Mint</i> | |
| <i>Fabric A2 Mint</i> | |
| <i>Fabric A3 Leaf</i> | |
| <i>Fabric A3 Leaf</i> | |
| <i>Fabric A4 Emerald</i> | <i>Bottom</i> |

GROUP 1, BACKGROUND

| | |
|-------------------------|---------------|
| <i>Fabric B1 Iris</i> | <i>Top</i> |
| <i>Fabric B1 Iris</i> | |
| <i>Fabric B1 Iris</i> | |
| <i>Fabric B2 Cloud</i> | |
| <i>Fabric B2 Cloud</i> | |
| <i>Fabric B5 Pastel</i> | |
| <i>Fabric B3 Mist</i> | |
| <i>Fabric B3 Mist</i> | |
| <i>Fabric B6 White</i> | <i>Bottom</i> |



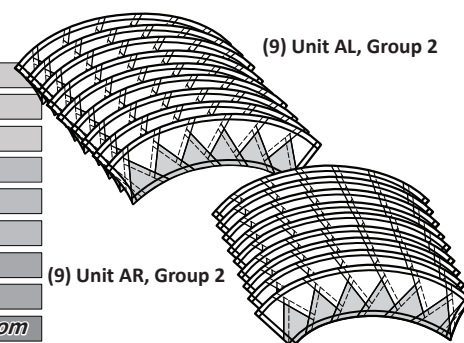
► Illustration 2, Strip Group 2 (Pairs 10-18)

GROUP 2, ACCENT

| | |
|--------------------------|---------------|
| <i>Fabric A5 Paprika</i> | <i>Top</i> |
| <i>Fabric A6 Garden</i> | |
| <i>Fabric A6 Garden</i> | |
| <i>Fabric A7 Amber</i> | |
| <i>Fabric A7 Amber</i> | |
| <i>Fabric A8 Red</i> | |
| <i>Fabric A9 Royal</i> | |
| <i>Fabric A9 Royal</i> | |
| <i>Fabric A10 Sky</i> | <i>Bottom</i> |

GROUP 2, BACKGROUND

| | |
|-------------------------|---------------|
| <i>Fabric B5 Pastel</i> | <i>Top</i> |
| <i>Fabric B4 Ice</i> | |
| <i>Fabric B4 Ice</i> | |
| <i>Fabric B1 Iris</i> | |
| <i>Fabric B1 Iris</i> | |
| <i>Fabric B5 Pastel</i> | |
| <i>Fabric B2 Cloud</i> | |
| <i>Fabric B2 Cloud</i> | |
| <i>Fabric B2 Cloud</i> | <i>Bottom</i> |



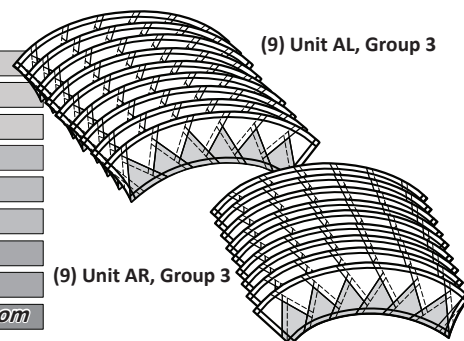
► Illustration 3, Strip Group 3 (Pairs 19-27)

GROUP 3, ACCENT

| | |
|--------------------------|---------------|
| <i>Fabric A10 Sky</i> | <i>Top</i> |
| <i>Fabric A11 Fern</i> | |
| <i>Fabric A12 Poison</i> | |
| <i>Fabric A12 Poison</i> | |
| <i>Fabric A13 Jade</i> | |
| <i>Fabric A13 Jade</i> | |
| <i>Fabric A14 Purple</i> | |
| <i>Fabric A15 Violet</i> | |
| <i>Fabric A15 Violet</i> | <i>Bottom</i> |

GROUP 3, BACKGROUND

| | |
|-------------------------|---------------|
| <i>Fabric B2 Cloud</i> | <i>Top</i> |
| <i>Fabric B6 White</i> | |
| <i>Fabric B4 Ice</i> | |
| <i>Fabric B4 Ice</i> | |
| <i>Fabric B3 Mist</i> | |
| <i>Fabric B3 Mist</i> | |
| <i>Fabric B5 Pastel</i> | |
| <i>Fabric B6 White</i> | |
| <i>Fabric B6 White</i> | <i>Bottom</i> |



Step 2: The Accent and Background Strips are paired, Accent Group 1 is paired up with Background Group 1. Group 2 to 2 and Group 3 to 3. The stacking order will set you up so you can complete the chain piecing process on the foundation papers.

Stacking: The stacking process begins with the largest Fabric # in each Group Set on the bottom. The strips are then stacked in reverse order finishing with the lowest number in each Group Set on the top. Set the strips aside and complete the stacking for Group 2 and 3. (See Illustrations #1 to #3 below).

Template Layout Sheets: We have provided you with (3) sets each of the Template Layout Sheets for Unit AL & AR Accent, and the Unit AL and AR Background. One set is placed with each Group.

Foundation Papers: Place (9) each of the foundation papers, Unit AL and AR, with each Group of strips. The papers are paired up with the strips in each Group and assigned the same Fabric #s. A *Fabric Swatch* from each strip, pasted onto the foundation papers will help keep the strips paired up as you begin your foundation paper piecing.

Staying Organized: After you complete the cutting described in the next section, you may want to put each of the three Strip Groups into sub-bags so you don't accidentally grab the backgrounds from the wrong group to sew to the accents from a different group. You will need (3) sub-bags for each, Bag #1AR and #1AL.

► Accent Fabric: Cutting Instructions Units AL & AR, Group 1

Step 1: Group 1 Accent Strips: Begin with the (9) accent strips from Strip Group 1 and place them on your table facing **right-side up**. Do not disturb the stacking order.

Group 1: Color A1 Blue

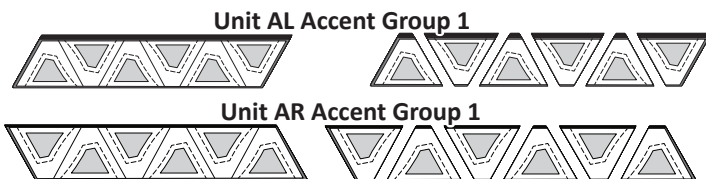
Step 2: One each of the **Unit AL and AR Accent Template Layout Sheets** found in Bags #1AL and #1AR are positioned onto the strips as shown.

NOTE - Prevent Slipping: Paper clips are used to keep the fabric and template pieces together before and after cutting. I normally slip one paper clip on each section # on the foundation papers before I cut the section pieces apart.



Step 3: Cut around each Template Layout Sheet, then the cutting is completed by slicing through the paper on each cut line to separate the individual sections included on each layout sheet.

Step 4: Place the **Unit AL Accent Template** pieces into a sub-bag labeled Strip Group 1 AL and place into Bag #1AL. Repeat this for the **Unit AR Accent Template** pieces and Bag #1AR.



► Background Fabric: Cutting Instructions Unit AL & AR Group 1

Step 1: Group 1 Background Strips: Begin with the (9) background strips from Group 1 and place them on your table facing **right-side up**. Do not disturb the stacking order.

Group 1: Background Fabric B1 Iris

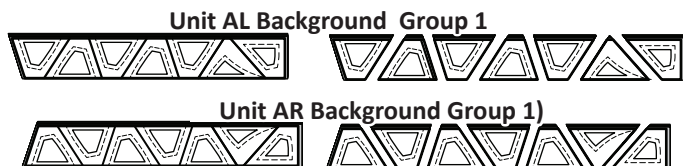
Step 2: One each **Unit AL and AR Background Template Layout Sheets** found in Bags #1AL and #1AR are positioned onto the strips as shown.

NOTE - Prevent Slipping: Paper clips are used to keep the fabric and template pieces together before and after cutting.

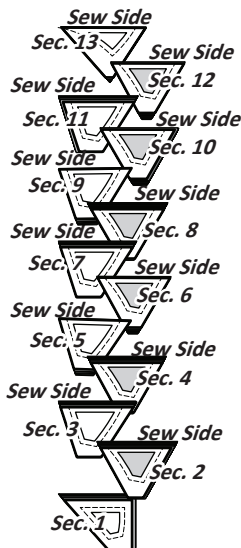


Step 3: Cut around each Template Layout Sheet, then The cutting is completed by slicing through the paper on each cut line to separate the individual sections for each layout sheet.

Step 4: Place the **Unit AL Background Template** pieces into a sub-bag labeled Strip Group 1 AL Bag #1AL. Repeat this for the **Unit AR Background Template** pieces and Bag #1AR.



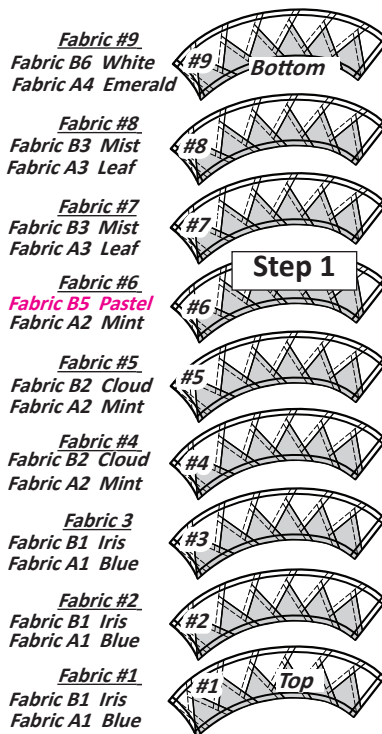
Finishing the Cutting: When you finish the cutting for Group 1, double check your bags and make sure the pieces for the left and right units are kept separate in their own sub-bags. After Group 1 is complete, repeat the same process for Strip Groups 2 and 3, then double check to make sure you haven't mixed the groups or the left and right stacks! Check once more!



► Stacking: Unit AL Group 1

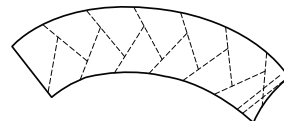
Starting with the pieces in Bag #1AL Group 1, position the templates and fabric pieces facing **right-side up**, with the **sew-sides** aligned at the top as shown to the left. Sec. 1 does not have a sew side. The pieces are stacked in the order they are sewn.

Stacking: The stacking process begins with Sec. 13 on the bottom. The pieces are stacked in reverse order finishing with Sec. 1 on top.



► Foundation Piecing: Unit AL

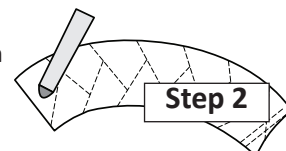
NOTE - Tracing the Dashed Lines: Place the foundation paper onto a light table. Flip the foundation paper over and trace the dashed lines printed on the front side of the foundation paper, onto the backside of the paper. You will only need to trace the first few pieces to get you started.



Step 1: Remove the Unit A papers from Bag #1AL, Group 1. Number and stack the papers 1-9 as shown to the left. The numbers should be written on the backside of the paper under Sec. 13.

NOTE - The fabric pieces were stacked and cut in order placing **Fabric #9**, the last piece in your stack on the bottom and **Fabric #1**, being the first piece on the top. The first piece of fabric in your stack is always referred to as **Fabric #1** in the paper piecing process. Each fabric follows in numerical order. **Fabric #1** is paired up with the first foundation paper labeled #1. The second piece of fabric is paired up with paper #2, the third piece is paired with paper #3, and so forth. Each time you begin the sewing process over, the same colors will fall in place leaving you with matching colors on each foundation unit.

Step 2: Find Sec. 1 on the foundation paper. Place a small amount of fabric glue on the backside of the paper under Sec. 1.



Rainbow Color Block Layout

Fabric Swatches should be cut, arranged and pasted onto the block layout below and before you begin cutting your fabric. Do not cover up the Fabric #s, as you will need them to refer back to once you begin cutting your fabric. If you choose to use a selection of different fabrics, you will need to assign our fabric #s to your fabric. This will help you keep organized when you begin cutting and stacking the strips and background piece. Addition yardage information, including how to calculate your own yardage if you use a different color layout is provided on Page 3 under 'Cutting Strips' and also on Page 22 under 'Generic Clamshell Yardage'. It is pretty simple to calculate the yardage so don't be afraid to take a little time and do your own thing! You can also use Quiltster!

