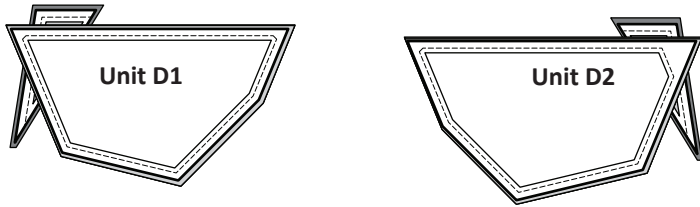


► **Stacking: Unit D1 & D2:**

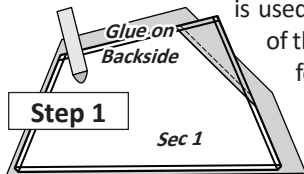
Position the templates and fabric pieces as shown for each unit facing *right-side-up*.



FOUNDATION PAPER PIECING: BORDER

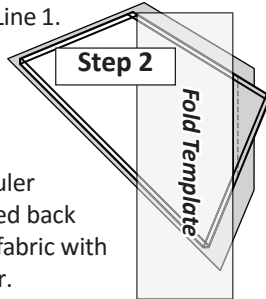
► **Border Unit D1:**

Step 1: Position the first piece of fabric for Sec. 1 *wrong-side-up* on your table. Lift the foundation paper, slide the fabric under Sec. 1. Glue is used to adhere the fabric to the backside of the paper. Repeat Step 1 for each of the foundation units for the borders.



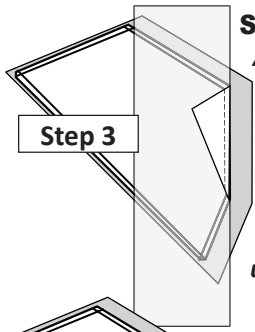
NOTE - Fabric Placement: The *wrong-side* of the fabric is against the backside of the paper.

Step 2: Place the fold template over the top of Sec. 1. Line the edge up with the solid black line marked Line 1.

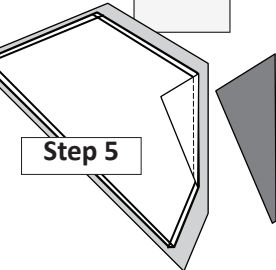
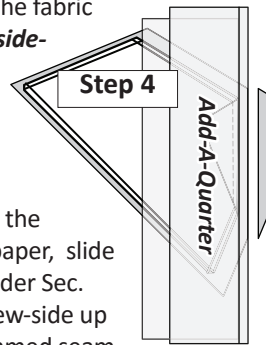


Step 3: Fold the paper back over the top of the fold template.

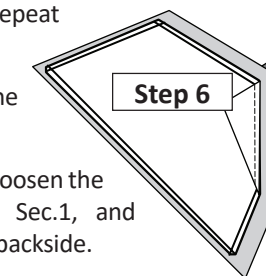
Step 4: Place the **Add-A-Quarter** ruler next to the folded back paper, trim the fabric with the rotary cutter.



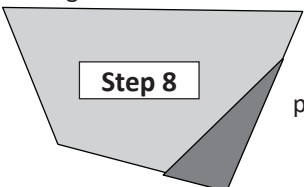
Step 5: Place the fabric for Sec. 2, *right-side-up* next to the folded back paper as shown.



Step 6: Lift the foundation paper, slide the fabric under Sec. 2. Line the sew-side up with the trimmed seam allowance. Repeat the process on each foundation paper.

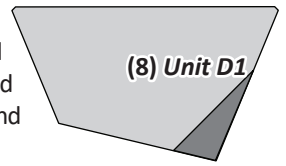


Step 7: Sew on Line 1 to complete the sewing on each unit.

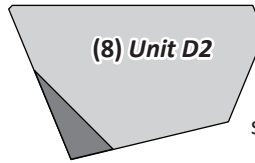


Step 8: Loosen the glue under Sec.1, and press on the backside.

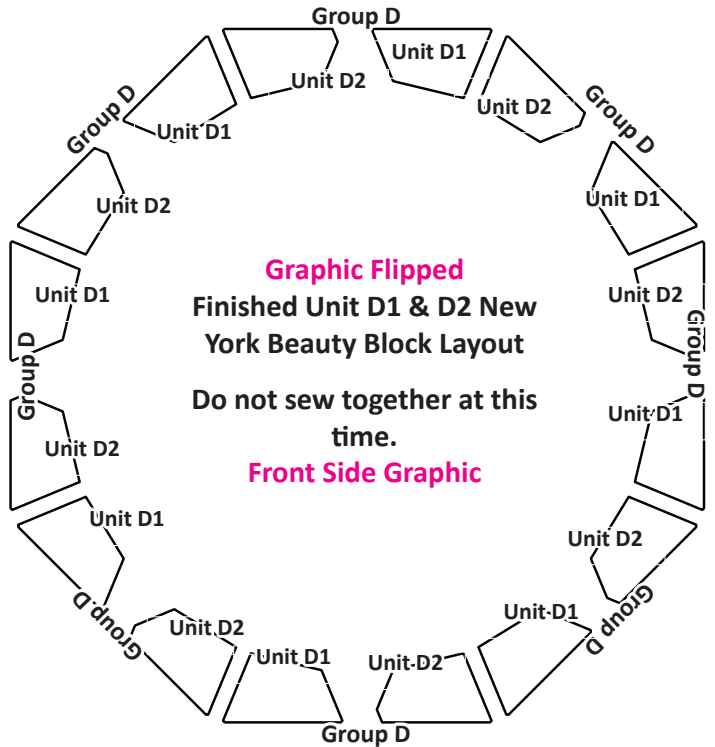
Step 9: When the paper piecing is complete, trim off the excess paper and fabric around the perimeter of the printed paper (don't forget the smart corners!) and proceed with the next unit.



► **Border Unit D2:**



The piecing process is the same for Unit D2 as it is for Unit D1, except that the pieces are rotated. The graphic to the left shows the finished block.



COMPLETING THE QUILT:

At this point, you should have completed the cutting and paper piecing for all of the units included in your Snowfall Tree Skirt pattern. The following instructions guide you through the final step of completing your project, which is assembly of the quilt top. Since this pattern includes units that are identically sized to two other published tree skirts (the collection includes Celestial Snowfall, Lakeshore Snowfall, and Emerald City), and also may be part of a customized layout that has been published by either your favorite quilt shop or by Quiltworx.com or one you created your own via Quiltster, the following instructions apply to any Snowfall Tree Skirt you might choose to complete.

The steps outlined on the following pages include:

- Removing the Foundation Papers
- Assembly of the Groups (A, B, C, and D)
- Optional: Turning your quilt into a Tree Skirt
- Quilting your Tree Skirt
- Binding your Tree Skirt

REMOVING THE FOUNDATION PAPER

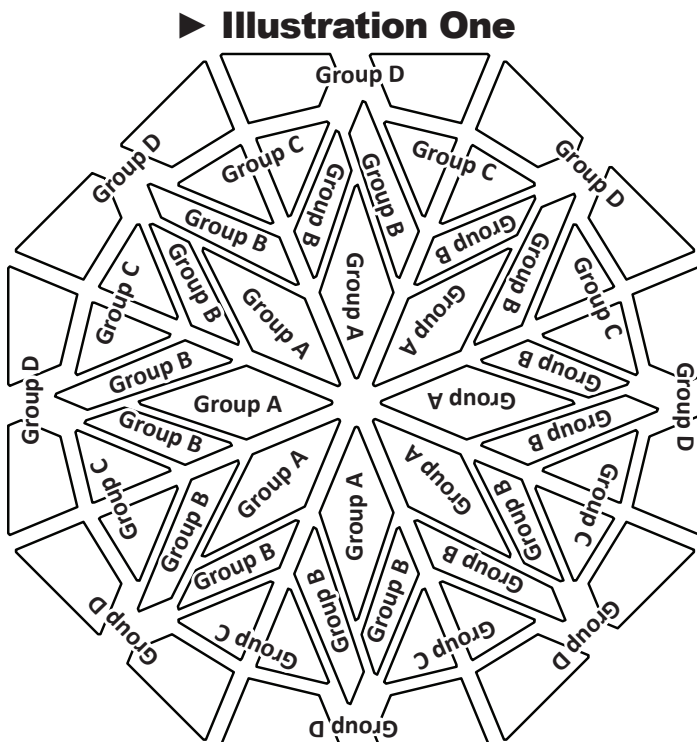
If you haven't all ready done so it is now time to remove the foundation paper. This pattern sews together easier without the foundation papers than it does with the foundation papers. All the pieces were designed with Smart Corners. Everything fits together with precision as long as you trimmed your papers correctly. If you find some of your pieces need to be eased in just a bit to fit along a bias edge, try the following tip.

NOTE - * TIP: Match the ends on both fabric pieces with right-sides-together. Secure the ends with a perfect match using a couple Flower Head pins. Place the pieces together at your Iron and steam the fabric along the raw edges until the fabric lies flat against your ironing board. The edges are then sewn together.

Removing the Foundation Paper: Always start with the last piece sewn onto the foundation paper, remove the paper in descending order, finishing with the first piece glued to the paper. To remove the paper, carefully tear the paper along the stitch line. You will need to place your finger at the end of each seam along the edge of the paper. Pinching the fabric, seam, and paper, with your finger before you tear the paper, is a good way to prevent the stitches from tearing out at the end of each seam.

NOTE - Too Much Glue: If you use too much glue when attaching the first piece to the paper, it may be difficult to remove the paper from the fabric. Do the best you can, leaving only what you cannot remove. The paper and glue that is stuck to the fabric will not hurt the fabric. When you wash the quilt, the glue will dissolve and the paper will become part of the filler. If you don't want to wash the quilt and the paper leaves a shadow under the fabric, then spray a dab of water on the small pieces of remaining paper and continue removing what is left.

ALL ASSEMBLY GRAPHICS SHOW THE FRONT-SIDE OF THE TREE SKIRT



ASSEMBLING THE QUILT BLOCKS: GROUPS A, B, C, AND D

NOTE - Reference the Sewing Illustrations on the next page, which are shown from the front side of the quilt.

Illustration One: The first Illustration shows the Block Layout for each Assembly Group. These groups are also broken down further into Left and Right blocks. Group A does not have a left and right. The Left and Right signification is shown in Illustration 2. This is important for knowing which assembly seams to complete in the following directions.

Pressing: As you join the units, press the seams to the direction the arrows are pointing.

► Assembly Instructions:

The unit blocks are joined in the following sequence.

Illustration Two: Complete the following Assembly Seams:

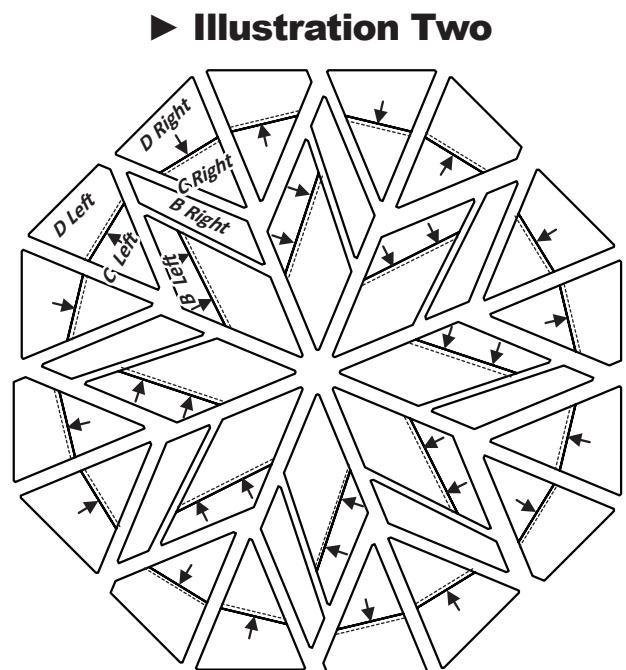
- Group B Left is sewn to Group A. Press seams towards Group A.
- Group D (right and left units) are sewn to Group C (right and left units). Make sure you are sewing the proper left and right units together per the Illustration 2 Graphic.

Illustration Three: Complete the following assembly seams:

- The right-side Group B is sewn to the right side of Group A/B. The seams are pressed towards Group B Right.
- The A/B blocks (Group A and Group B) are now sewn to the Left Group C/D. The seams are pressed towards Group C/D.

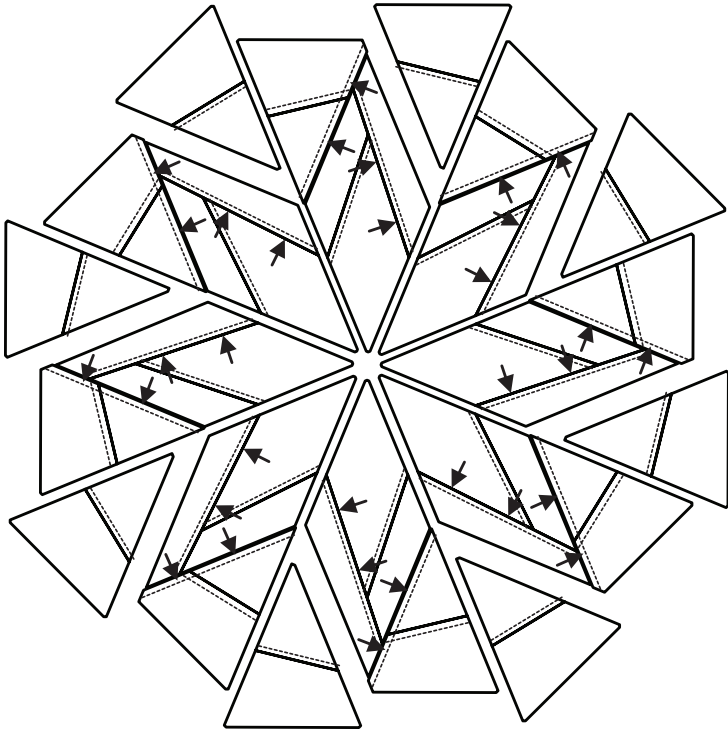
Illustration Four: Complete the following assembly seams:

- Group D/C Right is sewn to the right side of Group A/B. Seams are pressed towards Group A/B.

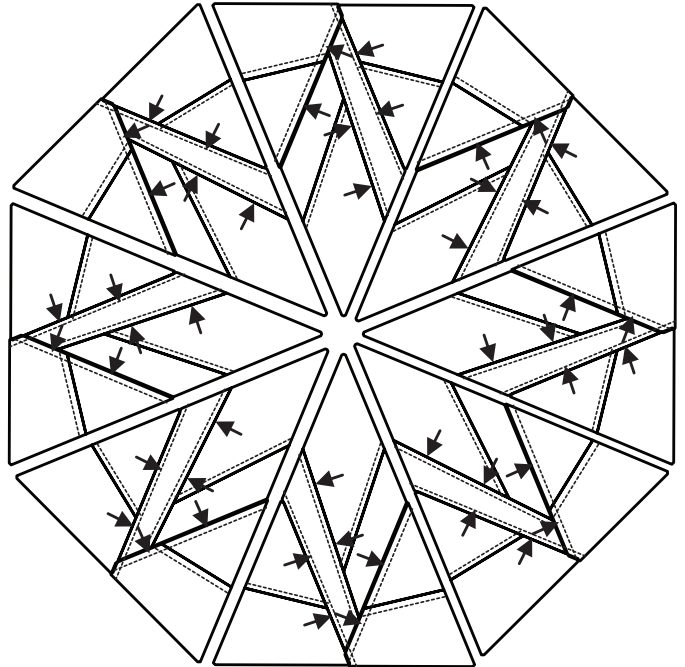


ILLUSTRATIONS 1 TO 7 WERE UPDATED TO FLIP
GROUP D FROM THE ORIGINAL PATTERN. THE
ASSEMBLY GRAPHICS WERE ORIGINALLY BUILT
SHOWING GROUP D FROM THE BACK. THE GRAPHICS
AND INSTRUCTIONS ARE UPDATED BELOW

► **Illustration Three**

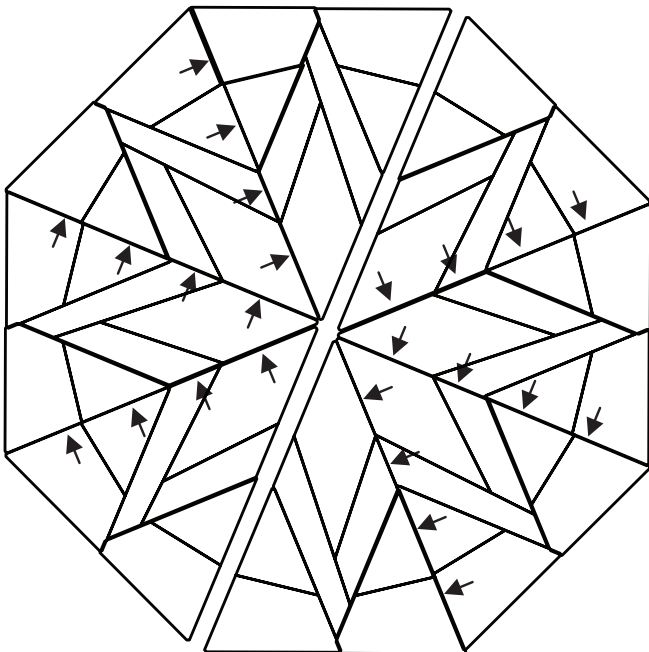


► **Illustration Four**

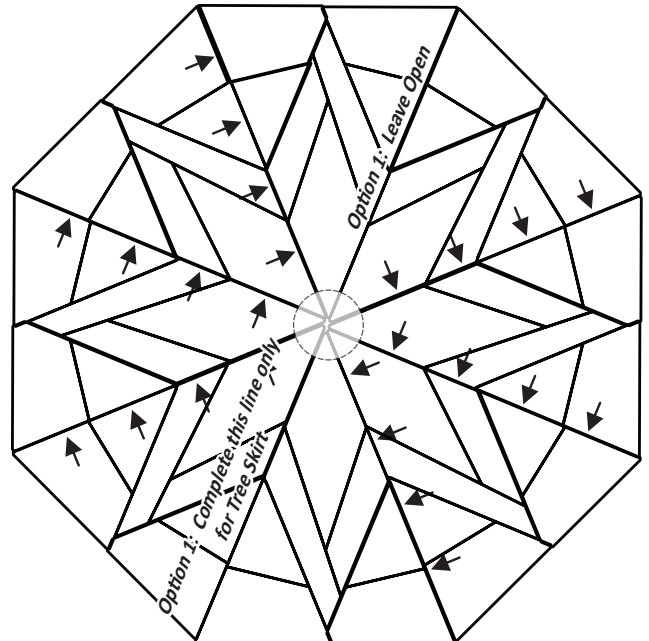


ALL ASSEMBLY GRAPHICS SHOW THE
FRONT-SIDE OF THE TREE SKIRT

► **Illustration Five**



► **Illustration Six**



TREE SKIRT OPTION

At this point, you have three options for sewing together the eight wedges.

Option 1: The first involves completing most of the seams, but leaving the last seam open and cutting out the center of the Tree Skirt to create a traditional Christmas Tree Skirt that wraps around the base of a tree.

Option 2: You can also simply sew all of the pieces together and create a circular top, which we still refer to as a tree skirt. You can simply place a tree on top of the skirt.

Option 3: This option involves sewing the quilt top together as noted in Option 2, then quilting the top. After it is quilted, cut down one seam and cut a hole in the center, then proceed with binding the top as you had planned. This is easiest for a long-arm quilter and also gives you continuity in the quilting design.

► Option 1 Assembly:

Complete the following final assembly seams:

- **Illustration Five:** Sew the two halves of the Tree Skirt together, pressing the seams in a clockwise direction from the front-side (counter-clockwise on the back).
- **Illustration Six:** Complete only one seam on the final Seam Line (see Illustration 6) and press as noted. Leave the other final seam open.

► Option 2 Assembly:

Complete the following final assembly seams:

- **Illustration Five:** Sew the two halves of the Tree Skirt together, pressing the seams in a clockwise direction from the front-side (counter-clockwise on the back).
- **Illustration Seven:** Complete the final Seam Line (see Illustration 7) and press as noted.

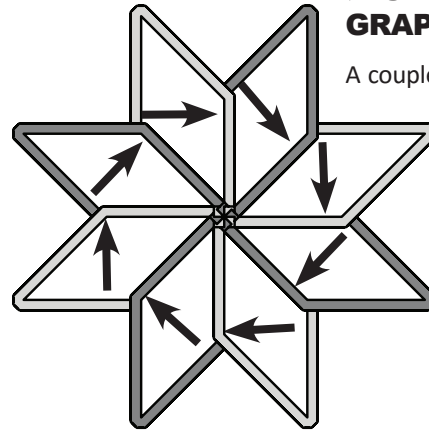
► Option 3 Assembly:

Complete just like Option 2. However, after the Tree Skirt is quilted, cut along one seam line to the center and then cut a 4" to 6" hole in the center. Cut (2) additional binding strips and proceed with the binding instructions below.

DOUBLE FOLDED BINDING INFORMATION

After the quilt top has been quilted, you can add the binding. Quiltworx.com recommends a **2-1/2" Bias Strip**, ironed in 1/2, lengthwise, then sewn to the front of the quilt and hand stitched down to the backside.

► STAR TWEAKING GRAPHIC



A couple stitches are picked out at each intersection. The seams are tweaked in opposing directions and pressed.

QUILTING DESIGNS

Quiltworx.com has completed a quilting design for the Snowfall Tree Skirts Collection. Additionally, the design that Certified Instructor, Tammy Doane has used on the cover quilt, is also available for purchase. This design fits the specific units used for this pattern. To find it, visit the pattern page and check the Related Products. To find it quickly, scan the QR Code for the pattern on the back page. Quiltworx.com recommends Hobbs 80/20 batting or similar to get a nice, thin, but flexible finish to the quilt.

► Illustration Seven

