

Grandma's Wedding Ring

Size: 68" by 80"

Booklet #2

GENERAL INFORMATION

The Grandma's Wedding Ring pattern was created in response to customer requests for learning the techniques required to make a wedding ring using assembly techniques that require construction in horizontal rows, instead of diagonal rows. In addition to an alternative assembly technique, this pattern also includes instructions for assembly of the center block as a 4-Patch instead of a block cut on the diagonal or cut as a solid piece.

To find corrections for this pattern, please visit the website, <http://www.quiltworx.com/patterns/grandmas-wedding-ring>. You can get to this page quickly by scanning the QR Code to the right. Don't forget to check the print date of this publication on the back lower corner of the pattern. Check the corrections page for any corrections prior to that and AFTER February 2016, when this updated version was published!



Make the Following Units to Complete an 68" x 80" Layout of the Grandma's Wedding Ring Design:

- (9) NP 110 Papers make (71) Unit A and (71) Unit B
- (1) TP 104 for cutting the templates

► Bags

You will need (4) Bags for this project:

- Bag #1: Unit A (Chapter 1)
- Bag #2: Unit B (Chapter 1)
- Bag #3: Melons (Chapter 2)
- Bag #4: Centers (Chapter 2)

► Pattern Groups

With the publication of Quiltster, Quiltworx has taken steps to reorganize many of its staple patterns based on Unit Groups. The following instructions will include cutting information, followed by piecing, and then leading to any sub-assembly information necessary to complete each Group across the pattern. For the Grandma's Wedding Ring, the following Groups should be completed:

- Group A: Unit A and B Arcs (Chapter 1)
- Group B: Centers and Melons (Chapter 2)

Instructions are included for Group A in Chapter 1 of this pattern. Instructions for Group B are included in Chapter 2 of this pattern. The assembly instructions are included in Chapter 3. A section of the quilt is shown at the left to help you visualize which parts of the pattern will be completed where.

► Extra Foundation Papers

Extra Foundation papers are available from Quiltworx.com to make this pattern larger. All instructions to increase the size are included in this pattern.

Yardage information and cutting information is included in Charts throughout this pattern. Booklet 1 includes information on extra foundation package names and how many units are included in each package. To increase this specific pattern:

- Up to 7 rings x 8 rings (or 92" x 104"), you need (2) extra package of the Strip Pieced A & B Arcs Package.
- Up to a 9 ring x 9 ring quilt, which is 116" x 116", you will need (2) packages of the Strip Pieced A & B Arcs.
- To make your Quilt Square, purchase (1) Geese Square Up Package, which will get you to any square size you like as noted in Booklet 1.
- If you would like extra TP 104 pages, you can get (3) extra sheets by purchasing (1) Wedding Ring Templates Package.

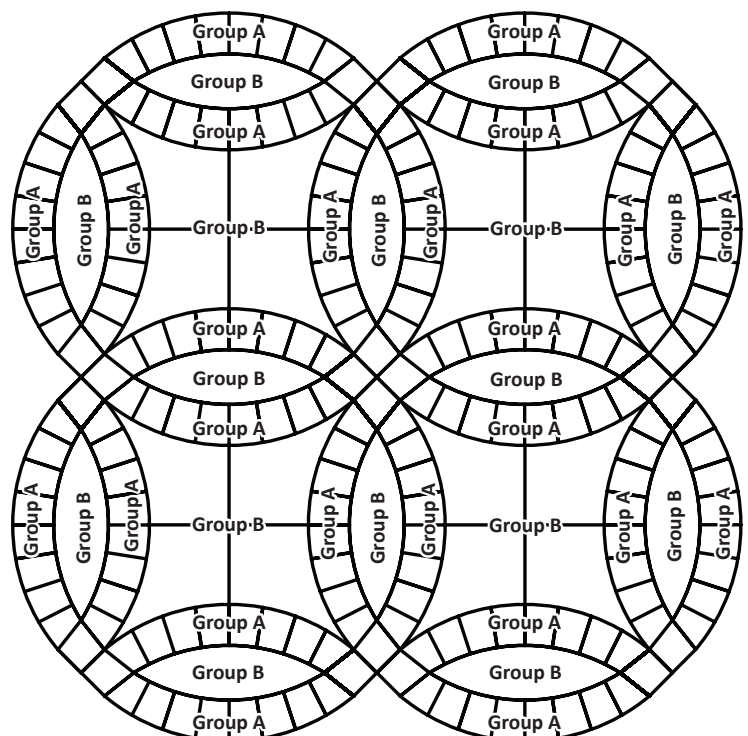
YARDAGE SELECTION

Ring Colors (Fabrics 1 to 8): The (8) fabrics you choose for the rings in Grandma's Wedding Ring can be arranged in any order you choose. The fabrics for our cover quilt were arranged to create a rainbow effect across the arc.

Corner Pieces (Fabrics 9 to 12): (4) colors are chosen for the corners. Preferably (2) medium light and (2) medium dark fabrics for the corners.

Center & Melon Templates 1 & 2 (Fabrics 13 to 17): The (5) fabrics you choose for the background fabrics should blend in color, and value.

Fabrics Selection and Color Layout: In general, Fabrics 1 to 12 should be placed with Chapter 1 and will be used only with Chapter 1. Fabrics 13 to 17 should be placed with Chapter 2 and will be used only with Chapter 2.



WEDDING RING CUTTING CHART 1 (TABLE RUNNERS AND BED RUNNERS)

| | | | | |
|--|-----------|-----------|-----------|------------|
| Number of Rings | 1 by 4 | 1 by 5 | 2 by 6 | 2 by 8 |
| Quilt Size | 18" x 55" | 18" x 68" | 30" x 80" | 30" x 104" |
| Yardage per Background Fabric (5) | 1/2 | 1/2 | 5/8 | 7/8 |
| MELON CUTTING | | | | |
| Number of Melons | 13 | 16 | 32 | 42 |
| CENTER UNITS: 4-PATCH OPTION, ASSUMES 5 BACKGROUNDS | | | | |
| 6" SQUARES (TOTAL) If you change the # of backgrounds, divide this number by the total number of background fabrics. | 16 | 20 | 48 | 64 |
| # of Centers Needed | 4 | 5 | 12 | 16 |

WEDDING RING CUTTING CHART 2 (WALL AND LAP QUILTS)

| | | | | | | | |
|--|-----------|-----------|-----------|-----------|-----------|-----------|-----------|
| Number of Rings | 2 by 2 | 3 by 3 | 3 by 4 | 4 by 4 | 4 by 5 | 5 by 5 | 5 by 6 |
| Quilt Size | 30" x 30" | 42" x 42" | 42" x 55" | 55" x 55" | 55" x 68" | 68" x 68" | 68" x 80" |
| Yardage per Background Fabric (5) | 1/2 | 5/8 | 5/8 | 5/8 | 7/8 | 7/8 | 1-1/8 |
| MELON CUTTING | | | | | | | |
| Number of Melons | 12 | 24 | 31 | 40 | 49 | 60 | 71 |
| CENTER UNITS: 4-PATCH OPTION, ASSUMES 5 BACKGROUNDS | | | | | | | |
| 6" SQUARES (TOTAL) If you change the # of backgrounds, divide this number by the total number of background fabrics. | 16 | 36 | 48 | 64 | 80 | 100 | 120 |
| # of Centers Needed | 4 | 9 | 12 | 16 | 20 | 25 | 30 |

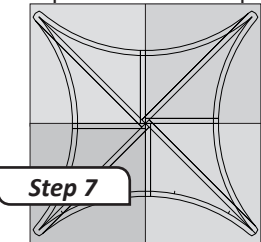
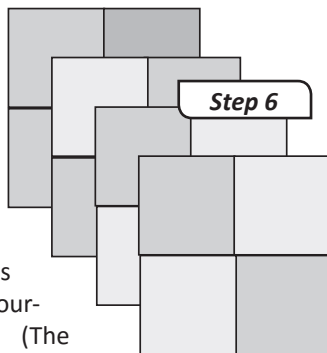
WEDDING RING CUTTING CHART 3 (BED QUILTS)

| | | | | | | | |
|--|-----------|-----------|-----------|------------|-------------|-------------|-------------|
| Number of Rings | 6 by 6 | 6 by 7 | 7 by 7 | 7 by 8 | 8 by 8 | 8 by 9 | 9 by 9 |
| Quilt Size | 80" x 80" | 80" x 92" | 92" x 92" | 92" x 104" | 104" x 104" | 104" x 116" | 116" x 116" |
| Yardage per Background Fabric (5) | 1 1/2 | 1-1/2 | 1-5/8 | 2 | 2-1/4 | 2-3/8 | 2-1/2 |
| MELON CUTTING | | | | | | | |
| Number of Melons | 84 | 97 | 112 | 127 | 144 | 161 | 180 |
| CENTER UNITS: 4-PATCH OPTION, ASSUMES 5 BACKGROUNDS | | | | | | | |
| 6" SQUARES (TOTAL) If you change the # of backgrounds, divide this number by the total number of background fabrics. | 144 | 168 | 196 | 224 | 256 | 288 | 324 |
| # of Centers Needed | 36 | 42 | 49 | 56 | 64 | 72 | 81 |

counter-clockwise in opposing directions. A little 4-Patch is formed at the center of each intersection.

Step 6: The four patch blocks are placed on your table facing right-side-up.

Step 7: The *Center Template 1* is positioned onto the 4-patch. The solid cross-lines on the template are lined up with the

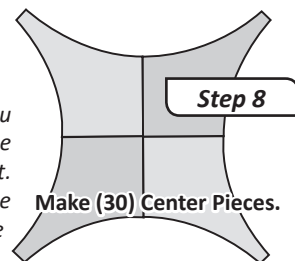


seam lines on the four-patch. (The dashed lines line up with the seam allowance). There are also solid lines that run on the diagonal, which you can line up with the corners to

make sure you have the block perfectly placed.

NOTE - Cut Carefully: Accuracy in cutting is important. These pieces will take you a while to cut with your paper templates. We have provided you with three copies. Use them carefully.

Step 8: Slowly cut around the template edge with your rotary cutter, making sure not to stretch the fabric as you cut. Large paper clips can be used to hold the template in place as you cut around your template.



NOTE - Creative Grids Templates: If you own the Creative Grid Templates, place the fabric pieces onto a turn table cutting mat. Center the Creative Grid Center Template ruler onto your 4-patch and trim away the excess fabric around your rulers.