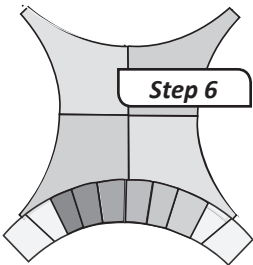


Step 4: Using a glue pen, dab a small amount of glue along the raw edge of Unit-B. Quickly shape, and match the edges of both pieces together.

Step 5: Position the pieces at your machine with the center section on top, next to the presser foot. This leaves Unit-B on the bottom next to the feed dogs.

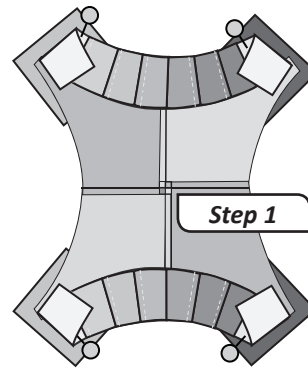
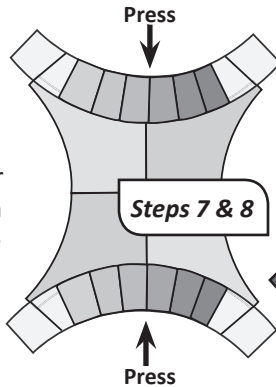
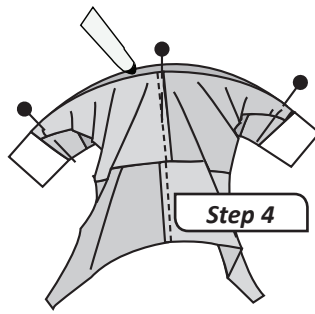


Step 6: The pieces are sewn together.

Step 7: Another Unit-B is sewn on the opposite side of the center section.

Step 8: Press the Unit-B arc toward the center section.

NOTE - Left Overs! You should have (11) single B-Units left over. These are used to finish the scalloped edge pieces.

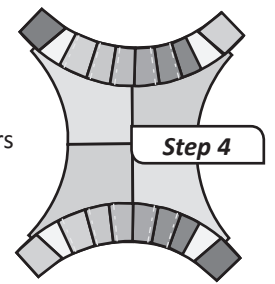
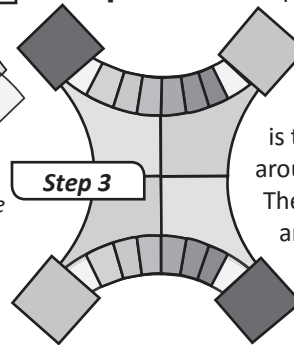
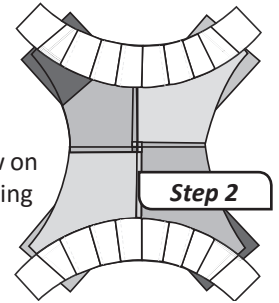


Step 1: The corner pieces from Bag #2 are sewn under Sections 9 and 10. Fold back the foundation papers on Lines 8 and 9. Position the corner pieces under the folded back corner sections on each piece. A pin is used to pin the fabrics in place.

Step 2: Fold open the papers and sew on the lines to complete the paper piecing for the corners.

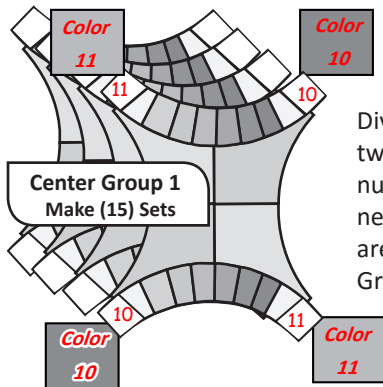
Step 3: The corner pieces are pressed open.

Step 4: Then the excess fabric is trimmed off around each corner. The foundation papers are removed from each B-Unit.

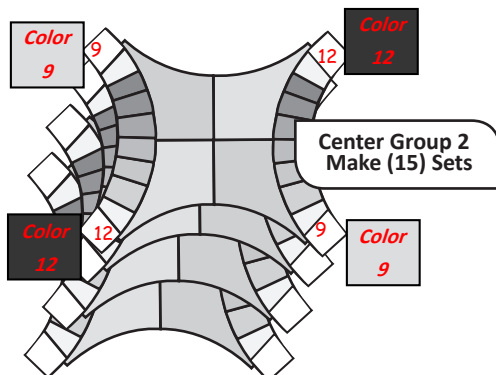


FINISHING THE CORNER SECTIONS (ASSEMBLY OF GROUPS 1 AND 2)

To keep you organized, we have labeled the pieces you assemble into groups, referred to as Groups 1 to 4. This section references the process for constructing Center Group 1 and Center Group 2. Constructing these groups involves adding corner squares to the Center/Unit B pieces. Graphics below show you which for which corner square colors go where, and how many of each Group you should make. The graphics show the front side of the unit.



Divide the Center/B-Units into two groups. Write the color numbers on each of the corner section. The corner colors are different for Group 1 and Group 2.



Step 5: Use these general steps to complete the Group 1 and Group 2 Center/Unit B blocks.

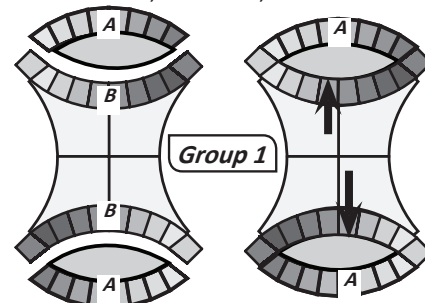
Step 6: When each of the Groups have been completed, it is best to place the Groups onto a design wall as illustrated in Illustration 1 on Page 12. Note that Group 1 is placed so the Unit B pieces run vertical and Group 2 is placed so the Unit B pieces run horizontal.

Step 7: To complete Groups 1 and 2, the Unit A Melon pieces should be sewn to Unit B. The graphics that follow will show what Groups 1 and 2 look like when they are complete. And, use the Illustrations on Page 12 and 13 to place the pieces back on a design wall. It may even be helpful to label these Groups with a small sticky note so they are placed back on the design wall in the proper position. To join the units, reference the Joining the Units graphic at the top right of Page 11.

Group 1, G-1: Vertical Setting, Illustration 1 & 2, Pages 12 & 13

The joining seam is pressed facing towards the Melon/Unit-A.

Corner sections, Color 10, Color 11. Make (15).



► Illustration #1

