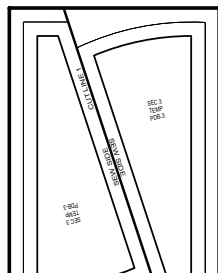


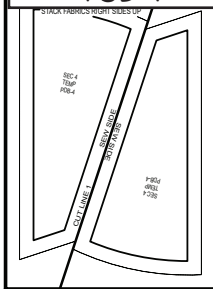
TP 80



Should be labeled  
PDB-3  
Sec-3

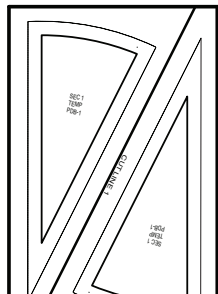
Should be labeled  
PDB-3

Should be labeled  
PDB-4



Should be labeled  
PDB-4  
Sec-4

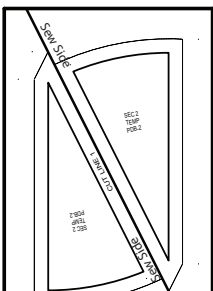
TP 80



Should be labeled  
PDB-1  
Sec-1

Should be labeled  
PDB-1

Remove Sew Side



Should be labeled  
PDB-2  
Sec-2  
Add Sew Side as Shown

Should be labeled  
PDB-2

# Pepperdish 2012

The Template Layout Paper, TP-80 includes Templates that were labeled incorrectly. If you received one of the first 250 patterns, you will have mislabeled Template Layout Sheets for your PDB Units.

To correct these labeling issues, simply cross out the current labels and relabel the papers as shown in this correction. From that point forward, simply following the directions in your pattern and everything will work out as it should!

TP 80

**Quiltworx.com**  
Judy Niemeyer Quilting  
<http://www.quiltworx.com>  
[info@quiltworx.com](mailto:info@quiltworx.com)