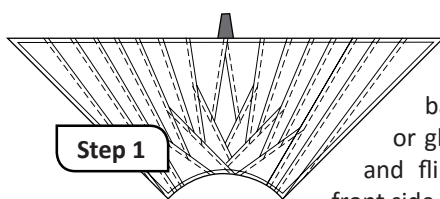
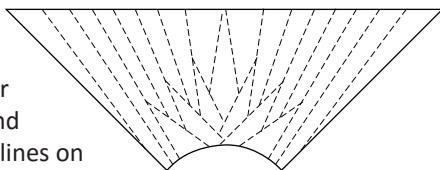


► **Foundation Paper Piecing Bag #2, Unit-P (4):**

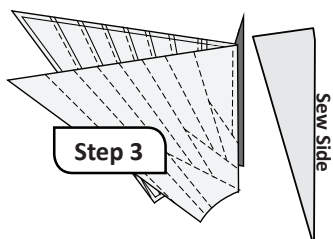
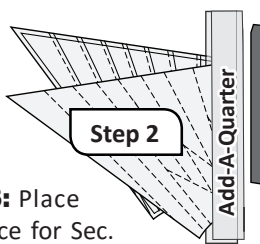
The papers for Unit-P are large and can be challenging to work with. Here are a few tricks that will help you position your fabrics in the right location.

- Place the papers up to a window or on a light table and trace the dashed lines on the backside of the papers.
- Number the sections. This will help you locate where to position each of the fabrics.
- Once you position the fabric under the papers, pin the fabric strips to the paper to keep them from sliding.



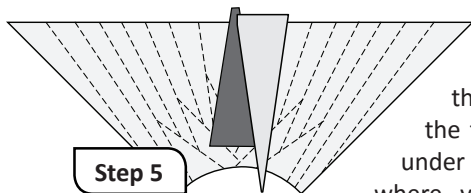
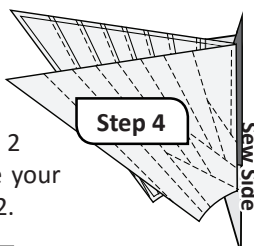
Step 1: Center the first piece of fabric under Section 1 on the backside of the paper. Pin or glue this piece in position and flip over so you see the front side, as shown.

Step 2: Lay the fold template next to Line 1. Fold the paper, back over the fold template on Line 1. Place the **Add-A-Quarter** next to the fold template and trim a 1/4" seam allowance.

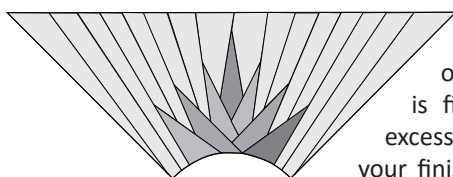


Step 3: Place the piece for Sec. 2 right-sides up on your table, aligning the sew sides for each piece.

Step 4: Lift the foundation paper and slide Fabric #2 right-side up under Sec. 2 with the paper folded back, making sure your fabric covers the underneath side of Sec. 2.



Step 5: Sew your first seam, then carefully release the fabric from the paper under Sec. 1 with your finger where you added the glue. Then press the fabric open.



Continue adding each piece in numerical order until the unit is finished. Trim off the excess paper and fabric. Place your finished units on a design wall or reserve for laying out your quilt later. Do not remove the paper.

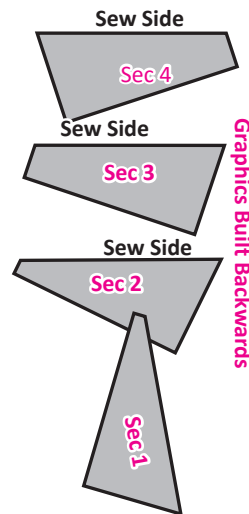
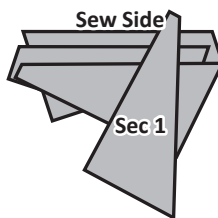
■ **UNIT-PDB, BAG #3 PREPARING AND STACKING THE FABRICS FOR FOUNDATION PAPER PIECING**

You should have enough fabric pieces cut out of the Accent Fabric #10-#13 to make (8) units and enough fabric cut from your background fabrics to make (12) units.

Match the templates and fabric pieces in Bag #3 up with the Sec. #s on the foundation papers. Position your pieces as follows facing *right-side-up*.

► **Stacking**

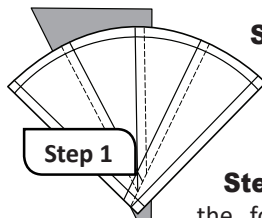
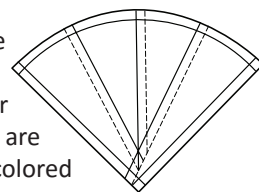
Stack the pieces with the sew-sides aligned at the top, facing right-sides-up. Starting with Sec. 4 on the bottom, stack the pieces in descending order.



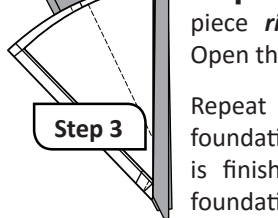
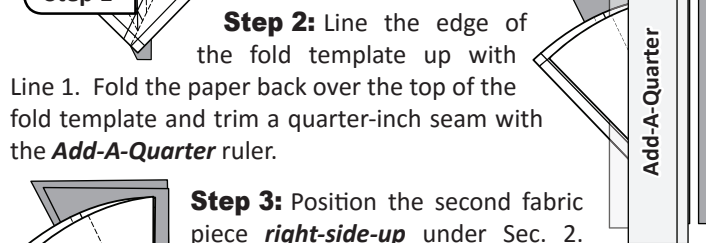
Graphics Built Backwards

► **Foundation Paper Piecing Bag #3: Unit-PDB**

This unit is pieced using two separate color ways. One includes all background pieces, while the other includes a color gradation of your border fabrics. There are (12) background *Unit-PDBs* and (8) colored border *Unit-PDBs*.



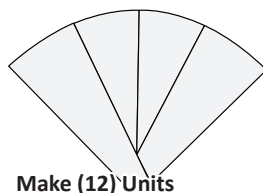
Step 1: Place fabric 1, *wrong-side-up*, under Sec. 1. Glue is used to adhere the Fabric to the paper before trimming the seam allowance



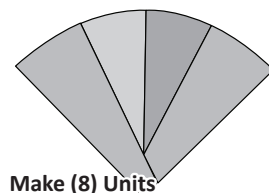
Step 2: Line the edge of the fold template up with Line 1. Fold the paper back over the top of the fold template and trim a quarter-inch seam with the **Add-A-Quarter** ruler.

Step 3: Position the second fabric piece *right-side-up* under Sec. 2. Open the paper and sew on Line 1.

Repeat until the four pieces are sewn to the foundation paper. When the foundation piecing is finished, trim the excess fabric from the foundation papers.



Make (12) Units

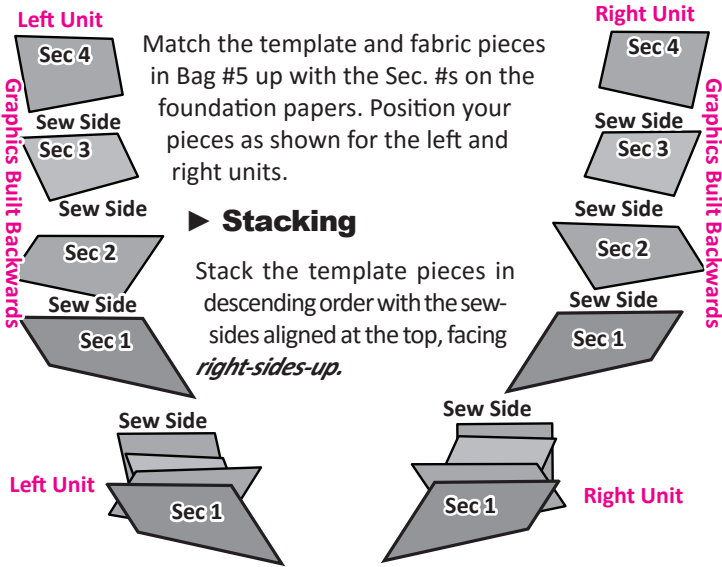


Make (8) Units

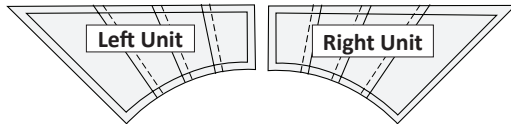
NOTE - Removing the Paper: Do not remove the foundation paper.

UNIT-E, BAG #5 PREPARING AND STACKING THE FABRICS FOR FOUNDATION PAPER PIECING:

You should have enough fabric pieces cut out to complete (12) each of the left and right units for the Accent Fabrics and enough fabric cut from your background fabrics to make (8) left and right units.

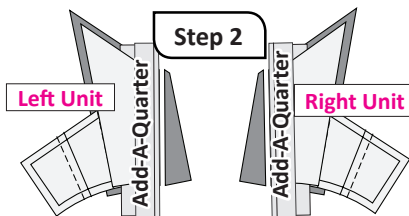
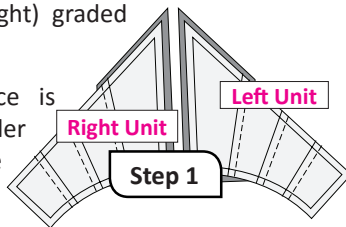


► Foundation Paper Piecing Bag #6, Unit-E: Left and Right Pieces:



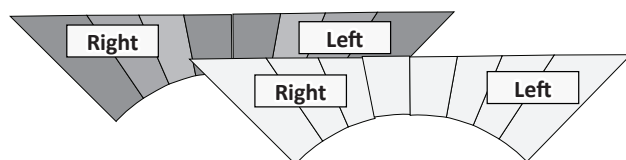
This unit is pieced using two separate color ways. One includes all background pieces, while the other includes a color gradation of your border fabrics. There are (8 left and 8 right) background Unit-Es and (12 left and 12 right) graded border Unit-Es.

Step 1: Your first fabric piece is placed wrong-side-up under Sec. 1. Glue is used to adhere the fabric to the paper before trimming the seam allowance in Step 2.



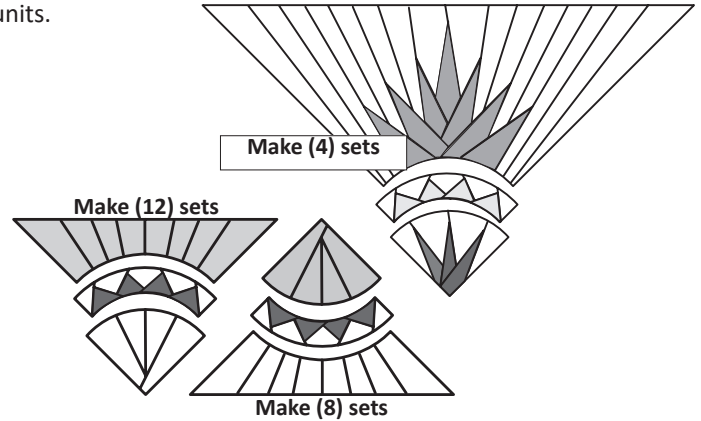
Step 2: The paper is folded back, the fabric is trimmed, and the process is continued to complete the E-Units. When the paper piecing is complete trim off the excess fabric,

from around the edge of the paper. Remove the foundation papers under sections 1-4. The left and right units are joined with a quarter-inch seam, along the edges of section 4.



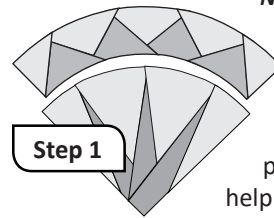
JOINING THE UNITS:

Sew the following units together. Pay special attention to the colors in Unit-PDA, which may be different for the four center units than the 20 border units. It is also recommended that you study Illustration 1 for the position of the dark and light border units.

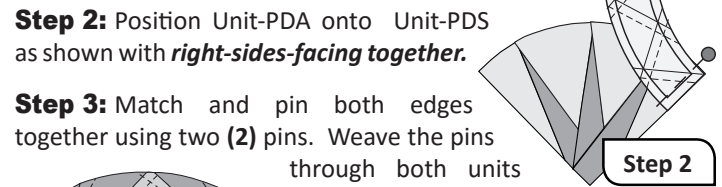


► Curved Piecing Unit-PDS to Unit-PDA

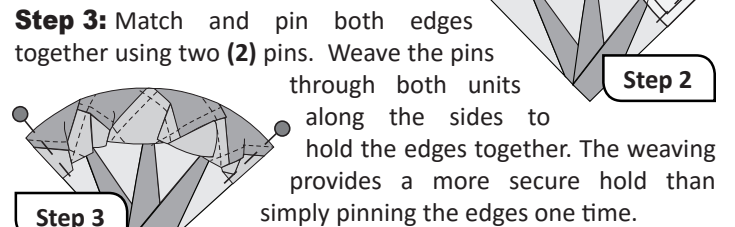
NOTE - Machine Settings: Set your machine to sew a quarter-inch seam allowance before you begin the curved piecing.



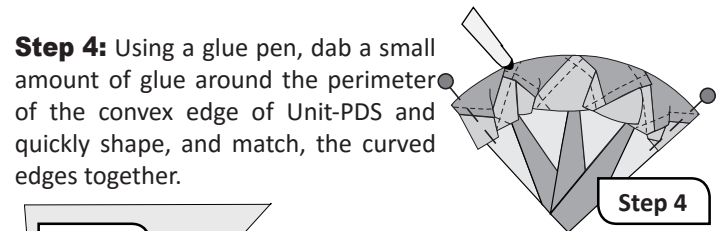
Step 1: The foundation paper is left on Unit-PDS to help stabilize Unit-PDS during the curved piecing process.



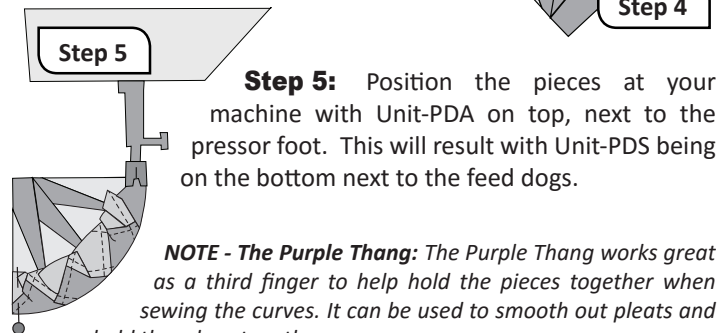
Step 2: Position Unit-PDA onto Unit-PDS as shown with right-sides-facing together.



Step 3: Match and pin both edges together using two (2) pins. Weave the pins through both units along the sides to hold the edges together. The weaving provides a more secure hold than simply pinning the edges one time.



Step 4: Using a glue pen, dab a small amount of glue around the perimeter of the convex edge of Unit-PDS and quickly shape, and match, the curved edges together.



Step 5: Position the pieces at your machine with Unit-PDA on top, next to the pressor foot. This will result with Unit-PDS being on the bottom next to the feed dogs.

NOTE - The Purple Thang: The Purple Thang works great as a third finger to help hold the pieces together when sewing the curves. It can be used to smooth out pleats and hold the edges together.