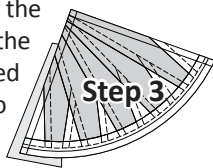
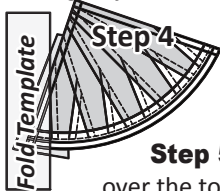


**Step 3:** Position the first piece of fabric for Sec. 1 *wrong-side-up* on your table. Lift the foundation paper, slide the fabric under Sec. 1 and glue the fabric to the backside of the paper. Steps 2 & 3 are repeated for each foundation unit before moving onto Step 4.

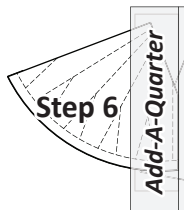
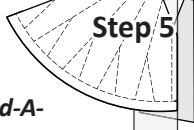


**NOTE - Fabric Placement:** The *wrong-side* of the fabric is against the backside of the paper. The fabric must extend beyond the edges of the dashed lines to cover the underneath side of Sec. 1.



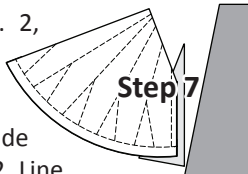
**Step 4:** Place the fold template over the top of Sec. 1. Line the edge up with the solid back line marked Line 1.

**Step 5:** Fold the paper back over the top of the fold template.

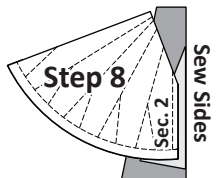


**Step 6:** Place the *Add-A-Quarter* ruler next to the folded back section lip-side down and trim the fabric with your rotary cutter. This leaves you with a quarter-inch seam allowance which, is lined up with the sew side on the next piece of fabric.

**Step 7:** Place the fabric piece for Sec. 2, *right-side-up* next to the folded back paper as shown.



**Step 8:** Lift the foundation paper and slide the fabric under Sec. 2. Line the sew-side up with the trimmed quarter-inch seam allowance. Make sure the fabric extends beyond the boundaries of the dashed lines for Sec. 2. Repeat Steps 4-8 for each foundation paper before moving onto Step 9.

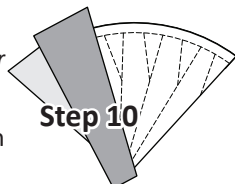


**Step 9:** Sew on Line 1. The stitches should start and stop about 1/8" past the beginning and the end of each stitch line. Complete the sewing on each Unit before moving onto the next step.

**NOTE - Trimming the Threads:** Sewing past the ends of your sew line makes it possible to cut the thread ends off each time you trim with your *Add-A-Quarter* ruler.

**NOTE - Before you Press:** Loosen the glue under Sec. 1. This should be done before you press.

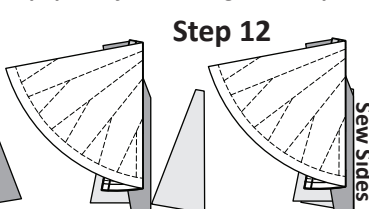
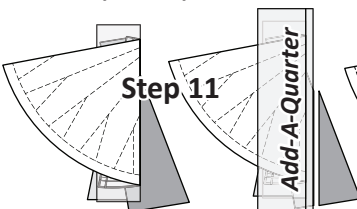
**Step 10:** Press the fabric pieces open on the backside of each paper.



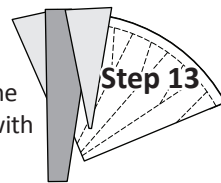
**Step 11:** Position the fold template over the top of Sections 1 and 2, lining the edge up with Line 2, fold back the paper and trim the fabric with the *Add-A-Quarter* ruler.

**Step 12:** Position the third fabric piece next to Sec. 3. Lift the foundation paper and slide the fabric under Sec. 3. Line the sew-side up with the raw edge of the trimmed quarter-inch seams allowance.

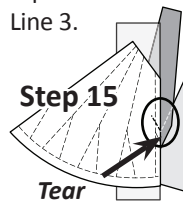
**NOTE - Repeat steps 11 & 12 on each paper before moving onto Step 13.**



**Step 13:** Open the paper, sew on Line 2 and press.



**Step 14:** Position the fold template over the top of Sections 1, 2 & 3, lining the edge up with Line 3.

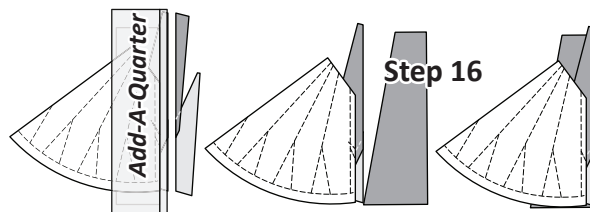


**Step 15:** Fold the paper back and tear the paper along the stitches on Line 2. Stop tearing when you hit the fold template.

*Tear*

**NOTE - Tearing the paper along the stitches allows the fabric to relax making it possible to place the *Add-A-Quarter* ruler along the folded edge.**

**Step 16:** Trim the fabric with the *Add-A-Quarter* ruler, position the third fabric piece *right-side-up* next to the paper. Lift the paper and slide the fabric under Sec. 3 in position.

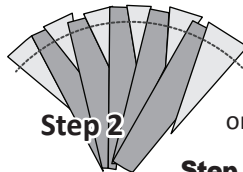
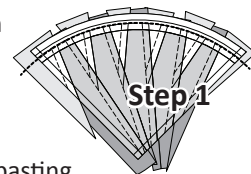


**Step 17:** Open the paper, sew on Line 3 and press.

Repeat the steps for the foundation paper stopping when you reach Sec. 12. The curved piecing is completed as follows.

## CURVED PAPER PIECING TEMP A-3

**Step 1:** After the fabric pieces are sewn onto sections 1-11, a basting stitch is sewn on the curved *dashed line* referenced as *Basting Stitch Line 11*.

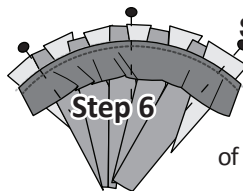
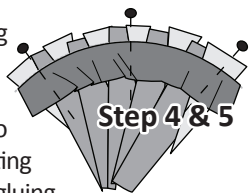


**Step 2:** The basting stitch is sewn the full length of the dashed line. The stitch length for the basting stitch on your machine should be set at about 2.5.

**Step 3:** Place a pin through your paper on the small line referenced 'Center'. Now flip the paper over and position *Unit A*, fabric-side-up and locate the stitches sewn on the Basting Stitch Line.

**Step 4:** Fold the arc, cut with Temp A-3 in half to find the center. With the fabrics facing right-sides-together, match and pin the centers marks on both pieces.

**Step 5:** Glue the raw edge of the arc along the basting stitch. You may need to clip the inside curve in a few places (clips should measure less than 1/8") before gluing to relax the fabric as you glue it onto the basting stitch. Be careful not to stretch the arc when gluing it in place.



**Step 6:** After the edges are secure, the pieces are sewn together. The paper is placed next to the feed dogs and a quarter-inch stitch line is sewn 1/4" in from the edge of the basting stitch.