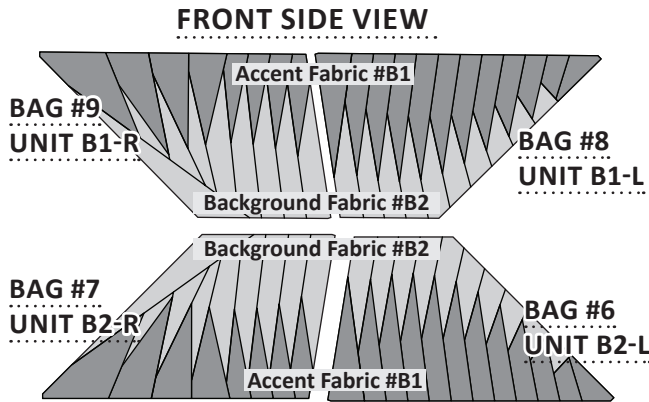
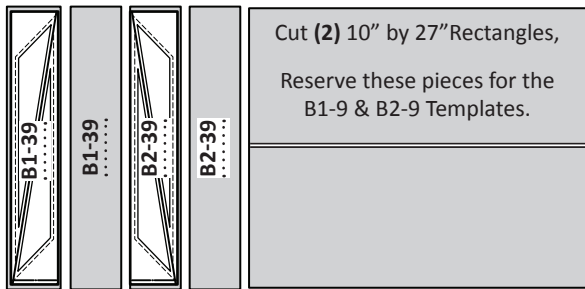


## UNITS B1-L, B2-L, AND B1-R, B2-R: BAG #6 #7, #8, #9, CUTTING INSTRUCTIONS

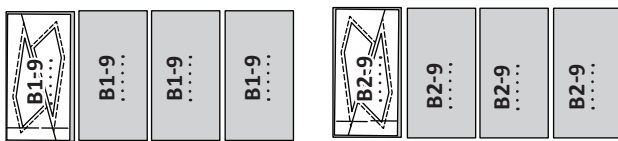


**Background Fabric #B2:** Cut (1) 21" by 42" Strip. This strip is used with the templates outlined in Steps 1 & 2.

**Step 1:** Cut (2) 21" by 3-3/4" rectangles for each **B1-39 & B2-39 Template Layout Sheets**. Stack (2) rectangles *right-side-up* under each template. Cutting on Line 1 yields (4) single pieces for each template. Place the pieces for **B1-39** in Bag #9 with Unit B1-R, place the pieces for **B2-39** in Bag #7 with Unit B2-R.

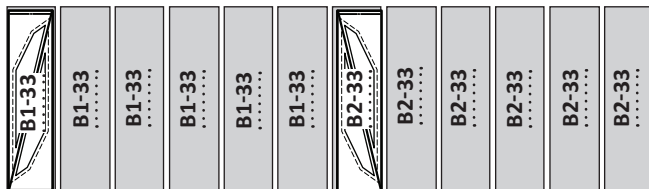


**Step 2:** You should have (2) 10" by 27" rectangles left over from Step 1. From these pieces cut (4) 10" by 5" rectangles for each **B1-9 & B2-9 Template Layout Sheets**. Stack (4) rectangles *right-side-up* under each template. Cutting on Line 1 yields (8) single pieces for each template. Place the pieces for **B1-9** in Bag #8 with Unit B1-L, place the pieces for **B2-9** in Bag #6 with Unit B2-L.



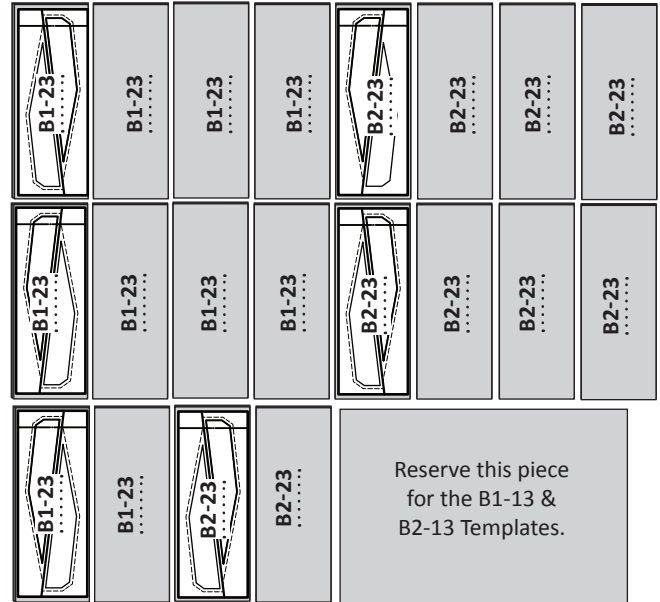
**Background Fabric #B2:** Cut (1) 14-1/4" by 42" Strip. This strip is used with the templates outlined in Step 3.

**Step 3:** Cut (6) 14-1/4" by 3-1/2" rectangles for each **B1-33 & B2-33 Template Layout Sheets**. Stack (6) rectangles *right-side-up* under each template. Cutting on Line 1 yields (12) single pieces for each template. Place the pieces for **B1-33** in Bag #9 with Unit B1-R, and the pieces for **B2-33** in Bag #7 with Unit B2-R.



**Background Fabric #B2:** Cut (3) 14-3/4" by 42" Strips. These strips are used with the templates outlined in Step 4.

**Step 4:** Cut (10) 14-3/4" by 5" rectangles for each **B1-23 & B2-23 Template Layout Sheets**. Stack (10) rectangles *right-side-up* under each template. Cutting on Line 1 yields (20) single pieces for each template. Place the pieces for **B1-23** in Bag #9 with Unit B1-R, and the pieces for **B2-23** in Bag #7 with Unit B2-R. Do not cut more pieces than you need. The left over fabric is used to cut additional pieces for Step 5 on the following page.



**Background Fabric #B2:** Cut (2) 12" by 42" Strips. These strips are used with the templates outlined in Step 5.

**Step 5:** Cut (10) 12" by 4-1/2" rectangles for each **B1-13 & B2-13 Template Layout Sheets**. Each strip yields (9) pieces. The other (2) pieces are cut from the previous leftover fabric in Step 4. Stack (10) rectangles *right-side-up* under each template. Cutting on Line 1 yields (20) single pieces for each template. Place the pieces for **B1-13** in Bag #8 with Unit B1-L, and the pieces for **B2-13** in Bag #6 with Unit B2-L.



**Background Fabric #B2:** Cut (1) 11-1/2" by 42" Strip. This strip is used with the templates outlined in Step 6.

**Step 6:** Cut (12) 11-1/2" by 3-1/4" rectangles. One strip yields (12) pieces. Stack (2) rectangles *right-side-up*, under each of the **B1-7 & B2-7, B1-5 & B2-5, B1-3 & B2-3, Template Layout Sheets**. Trim to fit each size. Cutting on Line 1 yields (4) single pieces for each template.