

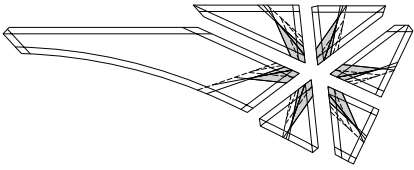
assigned fabric number does not mean you can't use the same fabric over and over. If you plan to repeat fabrics, using them in two or three different units, that fabric should be assigned more than one fabric number.

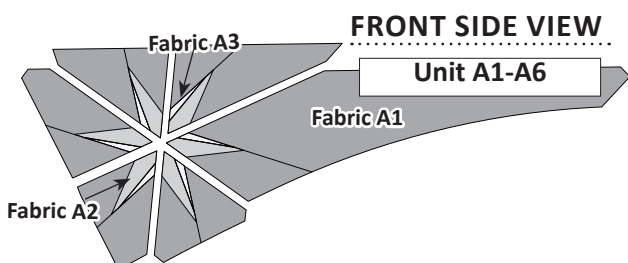
Example: If I wanted to use the same blue fabric for the background sections (unhatched) in Unit A & Unit C, and then again as an accent fabric (hatched) in Unit B, I would assign (3) different Fabric #s to the same blue fabric Color. {Fabric #A-1}{Fabric #C-1} and {Fabric #B-2}.

Selecting your Fabrics: If you are selecting your own fabrics, you will need to choose your fabric and assign a fabric # to each of your colors. Then, cut and paste a small fabric swatch into the designated Fabric Swatch Box provided on each of the fabric charts.

Selecting fabric can be a little challenging but, also a lot of fun. As you select them, remember the contrast between light and dark is only relevant when choosing fabrics for each unit. You will be surprised, with the impact that interchanging the light, medium and dark fabrics will have on your quilt. Spending a little extra time to plan your color layout may result in a new and exciting design element.

UNIT CS: BAG #1 YARDAGE CHART

Units A1-A6 Small Star		
		
FABRIC COLOR	YARDAGE	ASSIGNED COLOR
Background Fabric A1 Unit A1- A6, (TLS)	3/4 yd (27")	JN-C2913 Blue
Accent Fabric A2 Temp. A-2, (P-T)	3/8 yd (13-1/2")	JN-C2915 Taupe
Accent Fabric A3 Temp. A-3, (P-T) Optional!	3/8 yd (13-1/2")	Tonga-B3178 Moss

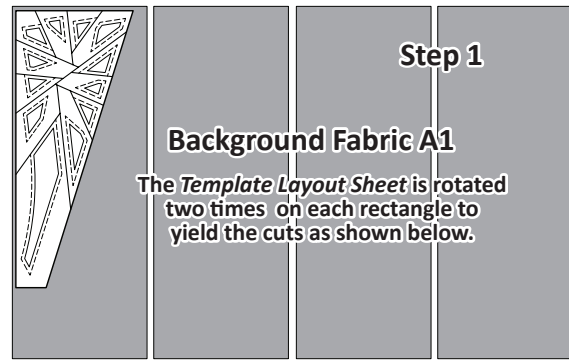


UNIT A: BAG #1 CUTTING INSTRUCTIONS

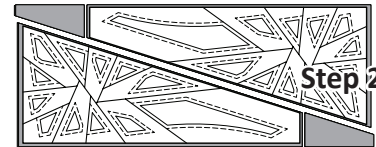
Background Fabric A1: Cut (1) 27" by 42" strip facing *right-side-up*.

Step 1: Subcut into (4) 10-1/2" by 27" rectangles (graphic above).

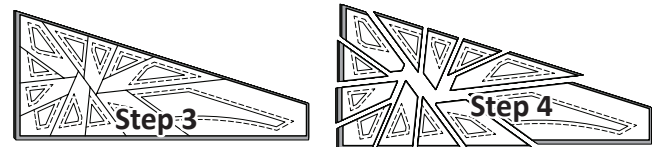
NOTE - Pre-Cutting : When pre-cutting the fabric pieces for the Templates or Template Layout Sheets, the strips you cut will always measure either the same size or just a little larger than the cut-size listed on the Template or Template Layout Sheet.



Step 2: Position the **Unit A Background Template Layout Sheet** in Bag #1, onto the (4) strips and subcut (8) pieces the same size and shape as the layout sheet.



Step 3: Re-stack the eight pieces under the layout sheet. Using your ruler and rotary cutter, slice through the paper and fabric following in numerical order on each Cut Line.



Step 4: When the cutting is completed, there are (8) pieces cut for each template section. Using a large paper clip, clip the templates and fabric pieces together and place the pieces for each Unit A1-A6 into their own small bag.

Accent Fabric #A2: Cut (2) 5" by 42" strips.

Step 5: Cross-cut (48) 1-3/4" by 5" rectangles. Place (8) pieces into each of the small bags with Units A1- A6.



NOTE - Pre-Cutting : Accent Fabric A3 for Sec. 3 is Optional. It's a very small piece and may not show up if the contrast is not strong enough between the two pieces. If you choose not to sew Sec. 3 onto the Foundation Paper, then skip the cutting instructions for Step 6, below.

Accent Fabric #A3: Cut (2) 5" by 42" strips.

Step 6: Cross-cut (48) 1-1/2" x 5" rectangles. Place (8) pieces into each of the small bag with Units A1- A6. Then, place all the small bags together into one gallon-sized storage bag and label it as Bag #1.

