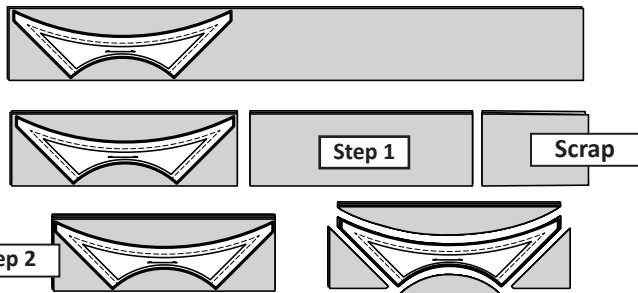
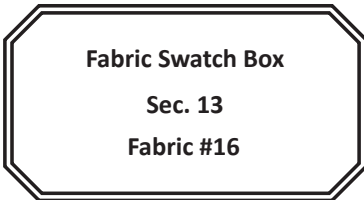


**Bag #7: PB Unit S**

**Fabric #16:** Is used to cut the fabric pieces for *Temp. S-8* which, is found in Bag #7.

**Step 1:** Cut (2) 5" by 42" strips across the width of the fabric. Sub cut the strips into (4) 17" by 5" rectangles.

**Step 2:** Stack the pieces *right-side-up*, use Template S-8 to cut (4) pieces. Place these pieces into Bag #7.



**Step 1:** Cut (1) 4-1/2" by 42" strip across the width of the fabric. Place the *PB Unit-S, Spike Template Layout Sheet* along the left edge of your strip. Use the layout sheet as a guide to cut (4) pieces the same shape of the template layout sheet.

**Step 2:** Restack the (4) pieces facing *right-side-up*. Position the layout sheet onto your stack and slice through the paper and fabric in numerical order to complete the cutting.



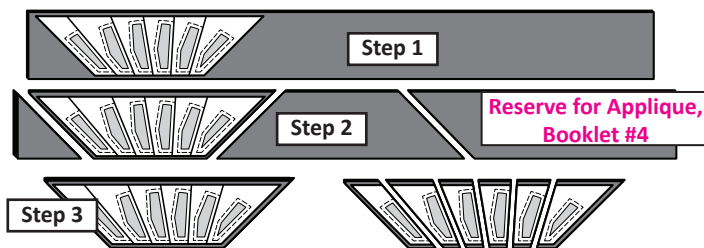
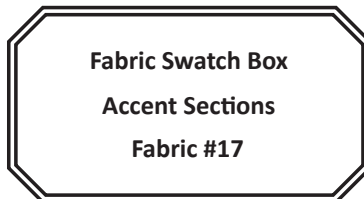
**Step 3:** Clip the templates and fabric pieces together and place into Bag #7. *Reserve leftover for Applique in Booklet #4 if this is the desired base color.*

**Fabric #17:** Is used to cut the fabric pieces for the *PB Unit-S Accent Template Layout Sheet* which, is found in Bag #7.

**Step 1:** Cut (2) 4-1/2" by 42" strips across the width of the fabric. Stack the strips *right-side-up* into one pile. Place the *PB Unit-S, Accent Template Layout Sheet* onto the top of your fabric strips along the left edge as shown.

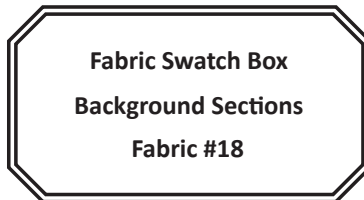
**Step 2:** Use the layout sheet as a guide to cut (4) pieces the same shape of the template layout sheet.

**Step 3:** Restack the (4) pieces facing *right-side-up*. Slice through the paper and fabric in numerical order to complete the cutting.



**Step 4:** Clip the templates and fabric pieces together and place into Bag #7. *Reserve the leftover for the base applique pieces in Booklet #4, if this is the desired base color.*

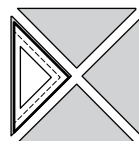
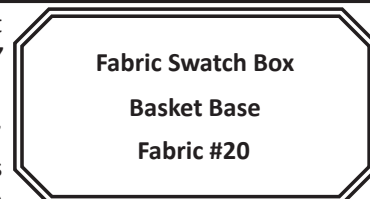
**Fabric #18:** Is used to cut the fabric pieces for the *PB Unit-S Spike Template Layout Sheet* which, is found in Bag #7.



**Fabric #20:** Is used to cut the fabric pieces for *Temp. S-7* which, is found in Bag #7.

**Step 1:** Cut (2) 4-1/2" squares. Stack the pieces *right-side-up*, use Template S-7 and cut (8) pieces. Place these pieces into Bag #7.

**Step 2:** *Reserve leftover for Applique in Booklet #4, if this is the desired base color.*



**Tips Before Sewing**

**Stacking and Chain Piecing Techniques:** Before you start the foundation paper piecing, refer back to Booklet 1 and review the information provided on Page 8 and 10 under General Piecing Instructions for the stacking and chain piecing.

As we continue with the stacking and paper piecing instructions for each of the units in booklet 3 you will find that the instructions become very minimal for each of the units, as we feel at some point you will just get tired of reading. However, you will need to pay attention to the information provided to assemble the units. This information includes tips on removing the paper. Joining the units, and pressing the seams. Each step is crucial to the success of your finished product.

The paper piecing graphics for the Paradise in Blooms flower units were built showing the 2" by 10" rectangles. In your cutting instructions you were given a choice whether to use the strips or to use the templates provided with the instructions. If you used the templates to cut the flower spikes the graphics will appear different. However, the order of the stacking is the same.

**NOTE - Printing Note:** *Flower Accent Templates: The paper templates in the first thousand patterns that we printed included a sew-side on the Flower Accent Templates for the Paradise in Blooms Flower sections. They were also assigned to each of the different units. It is very hard to keep track of the sew-side on these pieces and it's not necessary. The fabric pieces line up and fit under the spike sections along both sides of the template. The two things you need to pay attention to are the sewing order of the colors and making sure the pieces fit under each section #. (In the second printing the sew-side will be removed from these templates to avoid any further confusion).*