

Bag #10 : QB-Units O & P:
Bag #11: QB-Units Q & R:
Cutting Instructions

Fabric #26: Is used to cut the fabric pieces for the **QB-Units-O, P, Q & R Template Layout Sheets** which, are found in Bag #10 & 11.

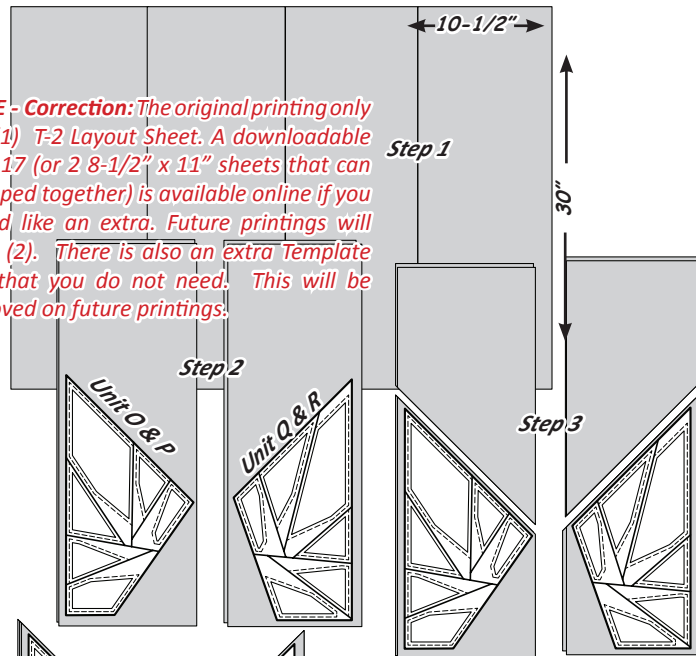


Step 1: Cut (1) 30" by 42" strip across the width of the fabric. Sub cut the strip into (4) 10-1/2" by 30" rectangles.

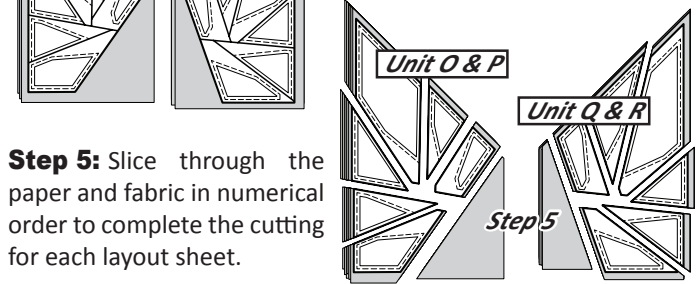
Step 2: Stack the pieces *right-side-up*. Place (2) in each group. Center the **QB-Unit-O & Unit-P Background Template Layout Sheets** on one group of fabric and the **QB-Unit-Q & Unit-R Background Template Layout Sheets** onto the other.

Step 3: The rectangles are cut diagonal along the upper edge of the layout sheet. This will yield (4) pieces.

NOTE - Correction: The original printing only has (1) T-2 Layout Sheet. A downloadable 11 x 17 (or 2 8-1/2" x 11" sheets that can be taped together) is available online if you would like an extra. Future printings will have (2). There is also an extra Template U-2 that you do not need. This will be removed on future printings.



Step 4: Restack the (4) pieces together placing each layout sheet onto the top of each stack of fabric.

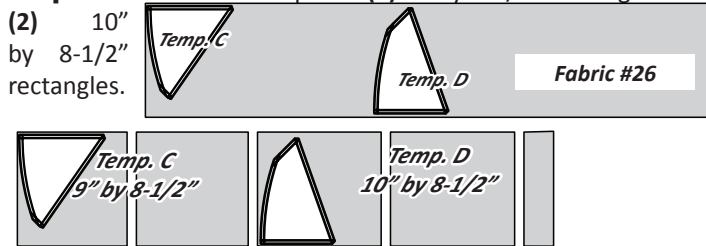


Step 5: Slice through the paper and fabric in numerical order to complete the cutting for each layout sheet.

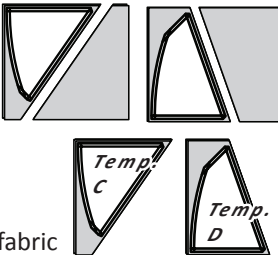
Step 6: Clip the templates and fabric pieces together, separating the template pieces for each Unit O & P, and Q & R. Place the pieces into their own quart size bag. Label the bags and place Units O & P, into Bag #10 and Units Q & R into Bag #11.

Step 7: Cut (1) 8-1/2" by 42" strip across the width of Fabric #26. Position the strip facing *right-sides-up* on your table.

Step 8: Cross cut the strip into (2) 9" by 8-1/2" rectangles and (2) 10" by 8-1/2" rectangles.



Step 9: Place the 9" by 8-1/2" rectangles with Template C. Place the 10" by 8-1/2" rectangles with Template D.



Cut (4) pieces with each template.

Step 10: Clip the templates and fabric