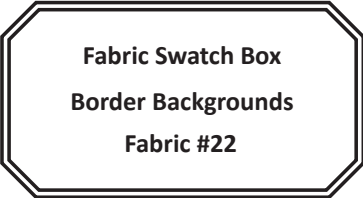
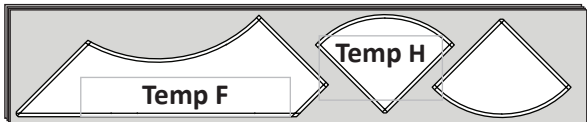


Bag #s 15: QB Templates E, F, G, H, Background Cutting Instructions

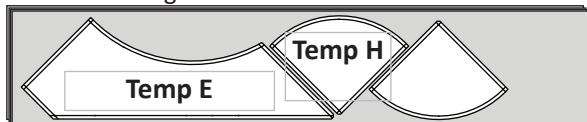
Fabric #22: Is used to cut the fabric pieces for *Border Background Templates E, F, G & H*. You will find these Templates in Bag #15.



Step 1: Cut (4) 8" by 42" strips across the width of the fabric. Stack the strips facing *right-sides-up* into one stack. Cut (4) pieces with *Template F*, cut (8) pieces with *Template H*. Place these pieces back into Bag 15.



Step 2: Cut (4) 8" by 42" strips across the width of the fabric. Stack the strips facing *right-sides-up* into one stack. Cut (4) pieces with *Template E*, cut (8) pieces with *Template H*. Place these pieces back into Bag 15.



Step 3: Cut (2) 3-1/2" by 42" strips across the width of the fabric. Stack the strips facing *right-sides-up* and cut (4) pieces with *Template G*. Place these pieces back into Bag 15.

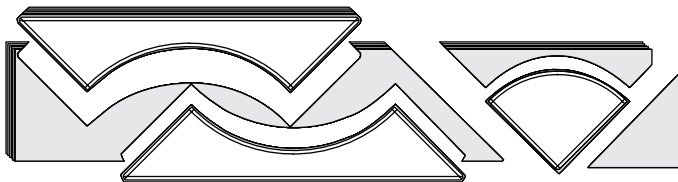
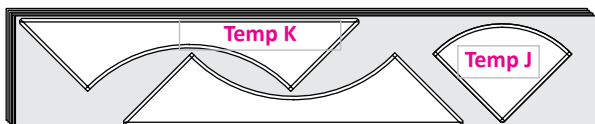


Bag # 15: QB Templates J & K Background Cutting Instructions

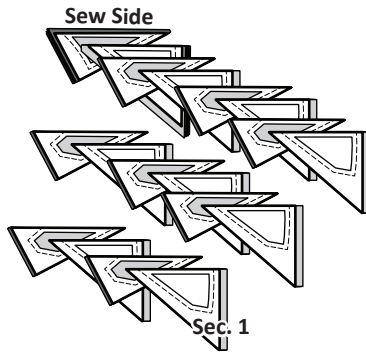
Fabric #25: Is used to cut the fabric pieces for *Border Background Templates J & K*. You will find these Templates in Bag #15.



Step 1: Cut (8) 8" by 42" strips across the width of the fabric. Stack the strips facing *right-sides-up* into one stack. Cut (16) pieces with *Template K*, Cut (8) pieces with *Template J*. Place these pieces back into Bag 15.



Foundation Paper Piecing: Unit T and U

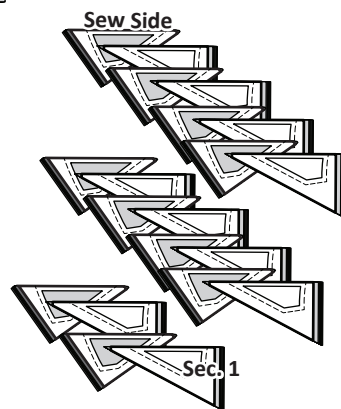


► **Stacking: Unit T, Bag #13**

The stacking begins with Sec. 18 and ends with Sec. 1 on top.

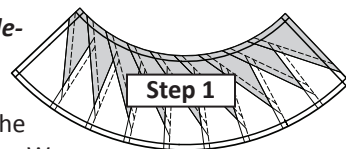
► **Stacking: Unit U, Bag #14**

The stacking begins with Sec. 19 and ends with Sec. 1 on top.

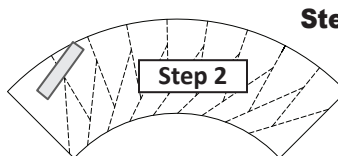


Paper Piecing Unit T

Step 1: Place Unit T *right-side-up* on your table and position as shown. The graphics for the paper piecing were built with the foundation papers for Unit NR. We have only provided a few graphics to get you started with Unit NL.

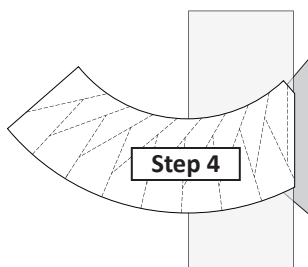
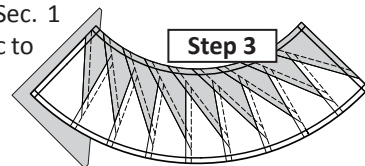


NOTE - Tracing the Dashed Lines: Trace the dashed lines printed on the front of the foundation paper, onto the backside of the paper.



Step 2: Find Sec. 1 on the foundation paper. Place a small amount of fabric glue on the backside of the paper under Sec. 1.

Step 3: Position the first piece of fabric for Sec. 1 *wrong-side-up* on your table. Lift the foundation paper, slide the fabric under Sec. 1 and glue the first piece of fabric to the backside of the paper.



Step 4: Place the fold template over the top of Sec. 1, lining the edge up with Line 1. Fold the paper back over the top of the fold template.