

# FABRIC: REQUIREMENTS, ORGANIZATION, AND GENERAL SUB-CUTTING INFORMATION

**Fabric Width:** The yardage amounts and cutting instructions are based on the use of 42" wide fabrics. If your fabrics are not 42" wide, you may need to recalculate the cutting instructions. This may result in additional yardage.

**Selecting Fabrics:** When selecting your fabrics, keep in mind the contrast in value between your light and dark fabrics used in the different sections. The spikes are very small compared to the main part of the leaf. Your background fabrics may be chosen from any selection of light, medium, or dark fabric and are sewn under the light sections on the foundation units. Your accent fabrics may also be chosen from any variety of light, medium, or dark fabrics and are sewn under the hatched section on the foundation units.

- Fabric #C1,: Unit A and B Leaf Background and Unit B Leaf Binding
- Fabric #C2: Unit A and B Leaf Accent and Unit B Leaf Binding
- Fabric #C3: Unit B Vein (and Binding, if desired)
- Fabric #C4: Light Wall Hanging Background
- Fabric #C5: Dark Wall Hanging Background
- Backing and Binding

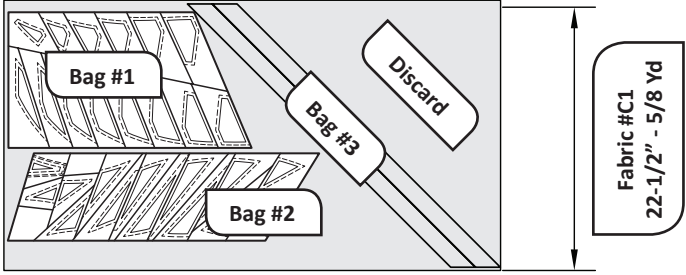
The yardage on the back of the pattern is based on the cover quilt. If you would like use different colors, a chart is included here that you can use to keep your colors organized. You can simply cut a small piece of your fabric off and glue it into the Fabric Swatch space so you remember which color you are cutting as you complete the cutting instructions.

YARDAGE TABLE: BAG PLACEMENT OCCURS DURING CUTTING		
LOCATION:	YDS:	FABRIC SWATCHES:
FABRIC #C1	5/8	PLACE SWATCH HERE (Leaf Background)
FABRIC #C2	3/4	PLACE SWATCH HERE (Leaf Accent)
FABRIC #C3	5/8	PLACE SWATCH HERE (Leaf Vein)
FABRIC #C4	3/8	PLACE SWATCH HERE (Light Background)
FABRIC #C5	3/8	PLACE SWATCH HERE (Dark Background)

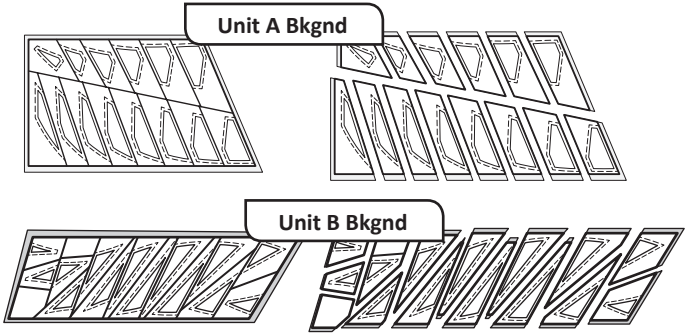
## CUTTING INSTRUCTIONS

**NOTE - Cutting Errors:** If cutting mistakes are made during the cutting steps for each bag, you will probably need to purchase some additional fabrics to complete your project, so follow directions carefully.

**Fabric #C1:** Place the *OL Unit A Background Template Layout Sheet* (Bag #1) and *OL Unit B Background Template Layout Sheet* (Bag #2) onto the fabric as shown in the pre-cutting graphic and cut along each edge of the layout sheet. Do NOT cut strips as you will need to use the left over fabric for the Bias Strips to complete the Leaf Binding. When you have cut out the Template Layout Sheet pieces, cut **(2) 1-1/4" Bias Strips** at a 45 degree angle from the left over fabric.



Center the Template Layout Sheet onto the fabric piece and continue to cut on each of the Cut Lines, moving in numerical order, until you have cut apart all the pieces. Graphics showing the Unit A and B Background Template Layout Sheet Sub-cutting are shown below.



Clip the template for each piece to the fabric beneath with a paper clip. Stack in numerical order, with Sec. 1 on the top. Clip the stack together, then place back into the appropriate bag as follows:

- Bag #1: *OL Unit A Background Templates* and fabric.
- Bag #2: *OL Unit B Background Templates* and fabric.
- Bag #3: Leaf Binding Bias Strips.

**Fabric #C2:** Cut **(1) 9" x 33"** rectangle from Fabric #C2. Place with the *OL Unit B Accent Template Layout Sheet* (Bag #2). Place the *OL Unit A Accent Template Layout Sheet* (Bag #1) onto the fabric as shown and cut on each edge of the layout sheet. Cut **(2) 1-1/4" Bias Strips** at a 45 degree angle, beginning from the bottom right corner.

