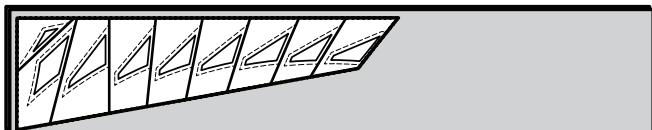


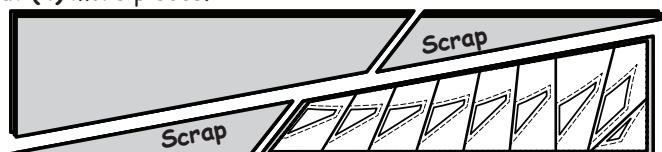
**Cutting Instructions: Bag #3:
Unit FL-3 Template Layout Sheets**

Step 1: Remove the (4) 8" x 42" strips cut from Background Fabric #3 and *Unit FL-3 Background Template Layout Sheet* from Bag #3.

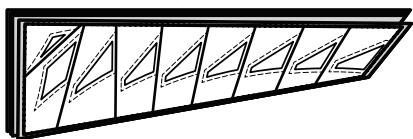
Step 2: Stack the (4) strips right-side-up and position the *Unit FL-3 Background Template Layout Sheet* on to the stack as shown.



Step 3: Sub-cut (4) fabric pieces to match the size and shape of the layout sheet. Rotate the template layout sheet 180 degrees and reposition it onto the other half of the strips. Cut (4) more pieces.



Step 4: Center the (8) fabric pieces you cut under the template layout sheet as shown.



Step 5: Position the paper clips along the edge of each section. Start cutting on **Cut Line 1**, and proceed in order to **Cut Line 7**.



Step 6: Re-stack the background pieces in numerical order and place back into Bag #3.

Step 7: Remove the (4) 8" x 42" strips cut from Accent Fabric #4 and the *Unit FL-3 Accent Template Layout Sheet*. Stack the fabric strips right-side-up. Position the layout sheet as shown and sub-cut (4) fabric pieces. Rotate the layout sheet and cut (4) more.



Step 8: Center the (8) fabric pieces under the layout sheet. Paperclip the sections, cut on **Cut Line 1** and proceed to **Cut Line 8**.



Step 9: Re-stack the accent pieces in numerical order and place back into Bag #3.

**Cutting Instructions: Bag #4:
Unit FL-4 Template Layout Sheets**

Step 1: Remove the (4) 5-1/2" x 42" strips cut from Background Fabric #3 and *Unit FL-4 Background Template Layout Sheet* from Bag #4.

Step 2: Stack the (4) strips right-side-up and position the *Unit FL-4 Background Template Layout Sheet* on to the stack as shown. Sub-cut (4) fabric pieces. Move the template layout sheet to the other half of the strips and cut (4) more pieces.



Step 3: Center the (8) fabric pieces you cut under the template layout sheet. Position the paperclips along the edge of each section. Start cutting on **Cut Line 1**, and proceed, in order to **Cut Line 6**.



Step 4: Re-stack the pieces and place back into Bag #4.

Step 5: Remove the (4) 6-1/2" x 42" strips cut from Accent Fabric #4 and the *Unit FL-4 Accent Template Layout Sheet*. Stack the fabric strips right-side-up. Position the layout sheet as shown and sub-cut (4) fabric pieces. Move the template layout sheet to the other half of the strips and cut (4) more pieces.



Step 6: Center the (8) fabric pieces under the layout sheet. Paper clip the sections, cut on **Cut Line 1** and proceed to **Cut Line 7**.



Step 7: Place the pieces back into Bag #4.

**Cutting Instructions: Bag #5:
Unit FL-5 Template Layout Sheets**

Step 1: Remove the (3) 12" x 42" strips cut from Background Fabric #5 and *Unit FL-5 Background Template Layout Sheet* from Bag #5.

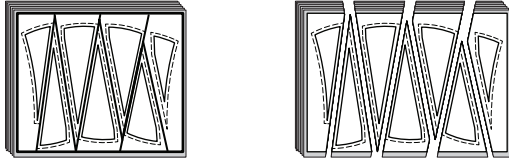
Step 2: Stack the (3) strips right-side-up and position the Unit FL-5 Background Template Layout sheet on to the stack as shown.



Step 3: Sub-cut each strip into (3) 13-1/2" by 12" rectangles. Remove one rectangle and place with your scraps.

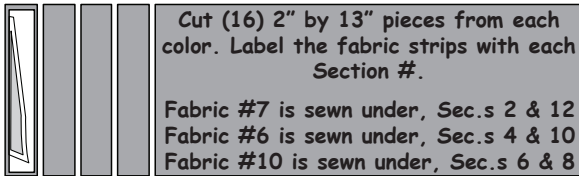


Step 4: Stack the remaining (8) pieces. Position the paperclips along the edge of each section. Start cutting on **Cut Line 1**, and proceed, in order, to **Cut Line 6**.



Step 5: Re-stack the pieces and place back into Bag #4.

Step 6: Remove the (3) 13" x 42" strips cut from the (3) Accent Fabric numbers 6, 7, and 10 along with the FL-5 Spike Template. Stack the fabric strips right-side-up and sub-cut (16) 2" by 13" pieces from each fabric.



Cut (16) 2" by 13" pieces from each color. Label the fabric strips with each Section #.

Fabric #7 is sewn under, Sec.s 2 & 12
Fabric #6 is sewn under, Sec.s 4 & 10
Fabric #10 is sewn under, Sec.s 6 & 8

Step 7: Place the pieces back into Bag #5 with the FL-5 Spike Template.

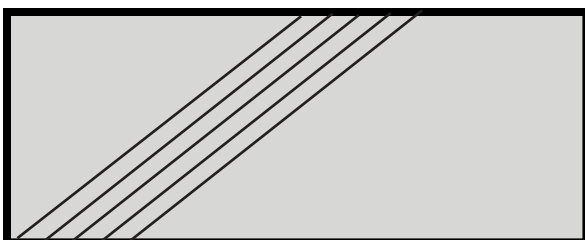
**Cutting Instructions: Bags #6:
Unit FL-6 Strips**

In Bag #6 you should have (6) 2" by 42" strips already cut from each Fabric # 6, 7, 8, & 9. A strip piecing process is used to assemble the FL-6 units, so no additional sub-cutting is necessary at this time.

**Cutting Instructions: Bag #7:
Unit FL-7 Leaf**

In Bag #7, there are (3) fabrics set aside for the Leaf. Fabric #10 was placed with the *Leaf Unit FL-7 Accent* pieces. Fabric #13 was placed with the *Leaf Template FL-8 Background* pieces. You will cut these pieces later in the pattern.

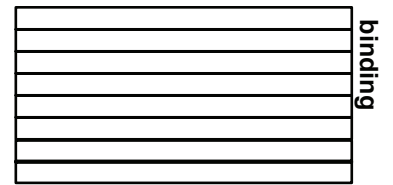
Fabric #11 is used for Sec. 2 which, is the vein on the Leaf Unit FL-7 Accent pieces. You will need to cut (4) bias strips from Fabric #11 at this time. Press the fabric (Fabric #11) open. Fold the fabric at a 45 degree angle along the bias and cut (4) 1-1/2" by 30" bias strips. Place these strips back in Bag #7 with the (4) Leaf Unit FL-7 Accent pieces.



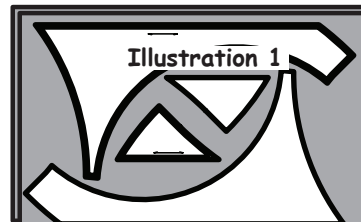
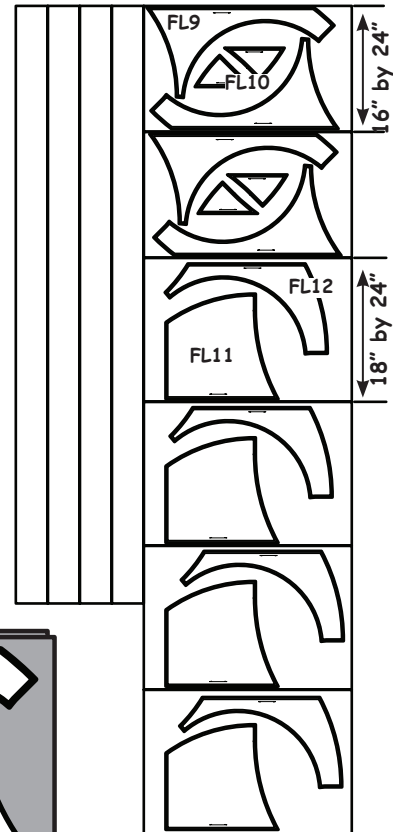
**Cutting Instructions: Bag #8:
Templates FL-9, FL-10, FL-11, FL-12**

Step 1: Fabric #10: Cut (1) 25" x 42" piece across the width of the fabric and set aside for the binding.

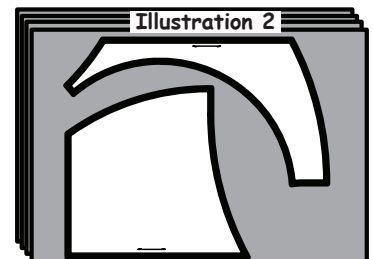
Step 2: Fabric #10: Cut (4) 80" by 4" strips along the selvage length of the fabric and set aside for Border #3.



Step 3: Fabric #10: Cut (2) 16" by 24" pieces across the remaining width of the fabric. Stack the pieces right-side up. Position Template FL-9 and Template FL-10 onto your fabric as shown in Illustration 1, below. Only (1) template was provided with these instructions. Cut the first (2) pieces with each template and then rotate the templates to cut the remaining pieces. You will need (4) of each piece for the quilt. Place the pieces back into Bag #8. Flower pins should be used to hold the paper templates in place as you cut around the pieces.



Step 4: Fabric #10: Cut (4) 18" by 24" pieces across the remaining width. Stack the (4) pieces right-side-up. Position Template FL-11 and Template FL-12 onto your fabric as shown in Illustration 2. Cut (4) pieces using each Template. Place these pieces with Template FL-11 and Template FL-12. Place the pieces back into Bag #8.



PART 3: General Piecing Instructions

Tension, Stitch Length, and Needle Size: The tension and stitch length on your machine should be adjusted according to the weight of the paper on which you are sewing. Sew a couple practice seams through a few scraps of paper and fabric. Check the tension for even, tight stitches. If the paper is hard to pull away from the fabric, tighten the stitch a bit. If the