

Binding Information:

Double Folded Straight Edge Binding: The width of your binding is up to you. I normally cut my strips 2-3/4" wide. I like the look of a wider binding. A wider binding is also easier to sew onto the quilt and fold over the edges. But as I said, the choice of the width is up to you. You will need to cut enough 42" strips to go around the outer edge of your quilt. In this case, (7) 2-3/4" by 42" strips will likely be enough. There are many different ways to approach sewing on a binding. The best resource for information about binding is found through an internet search.

Miscellaneous Pattern Information:

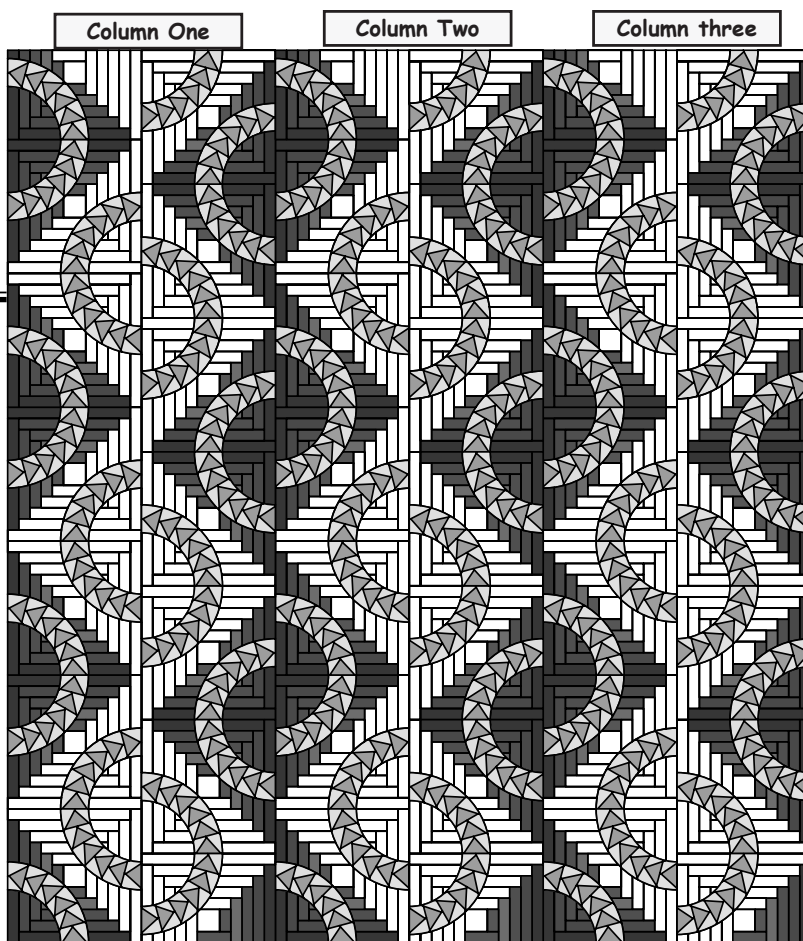
Log Cabin Cutouts: A companion quilt, named the Log Cabin Cutouts has been designed to use the cutouts from the Log Cabin block. If this pattern is not available at your local quilt shop you can purchase the pattern by visiting our website at <http://www.quiltworx.com>, click on Browse Patterns, and search for Log Cabin Cutouts. You can scan the code on the back of the pattern and it is listed at a Related Product on the pattern page.

Quilting Designs: The coversheet was quilted by Vicki Ibson and upon publication (August 2013), the design has not been digitized. However, please visit the website and watch our newsletters and facebook page for an announcement of the availability of a quilting design as it is our intention to have one in the future.

Line Drawings: Line drawings are available below and online to allow you to color this design and play with color. You may photocopy the page in the pattern with this information on it or print the electronic copies. You may also use the electronic copies in digital photography editing software to play with color if you are familiar with the software functionality.

Fabric Cards: Fabric cards are available online for the coversheet quilt and may also be updated occasionally out of new fabric lines. Please reference this information by scanning the code on the lower left of the pattern and finding the Official Samples Gallery on the pattern page. If you don't have a handheld device, go to the Pattern Page for Osprey's Nest at <http://www.quiltworx.com>. Yardage information will be presented as shown in the Fabric lists provided below.

Illustration 3



Log Cabin Fabrics

Light Fabric #1 7/8 Yard Log Cabin	Dark Fabric #1 7/8 Yard Log Cabin
Light Fabric #2 7/8 Yard Log Cabin	Dark Fabric #2 7/8 Yard Log Cabin
Light Fabric #3 7/8 Yard Log Cabin	Dark Fabric #3 7/8 Yard Log Cabin
Light Fabric #4 7/8 Yard Log Cabin	Dark Fabric #4 7/8 Yard Log Cabin
Light Fabric #5 7/8 Yard Log Cabin	Dark Fabric #5 7/8 Yard Log Cabin
Light Fabric #6 7/8 Yard Log Cabin	Dark Fabric #6 7/8 Yard Log Cabin
Light Fabric #7 7/8 Yard Log Cabin	Dark Fabric #7 7/8 Yard Log Cabin
Light Fabric #8 7/8 Yard Log Cabin	Dark Fabric #8 7/8 Yard Log Cabin
Light Fabric #9 7/8 Yard Log Cabin	Dark Fabric #9 7/8 Yard Log Cabin

Osprey's Nest Fabrics

Light Fabric #10 3/4 Yard Background Nest	Dark Fabric #10 3/4 Yard Background Nest		
Light Fabric #11 3/4 Yard Background Nest	Light Fabric #13 7/8 Yard Geese	Dark Fabric #11 3/4 Yard Background Nest	Dark Fabric #13 7/8 Yard Geese
Light Fabric #12 3/4 Yard Background Nest	Light Fabric #14 7/8 Yard Geese	Dark Fabric #12 3/4 Yard Background Nest	Dark Fabric #14 7/8 Yard Geese