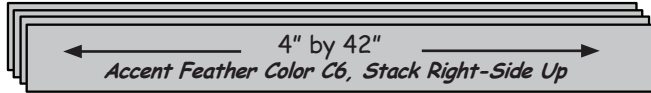
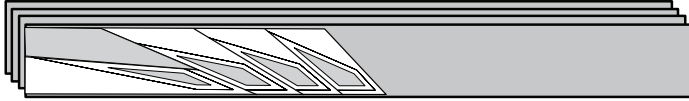


Unit BL: Feather (Spike) Template Layout Sheet: Bag #4

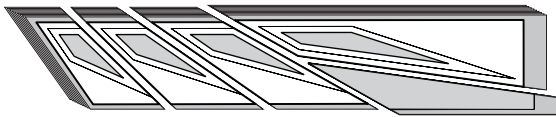
Step 1: Open and stack the (4) remaining 4" by 42" strips cut from Color C6, *right-side-up* into (1) stack.



Step 2: Use the *Unit BL Feather (Spike), Template Layout Sheet* and cut (8) fabric pieces to match the size and shape of the template layout sheet. Repeat the previous steps, rotate and reposition the layout sheet as needed to cut the (8) pieces.



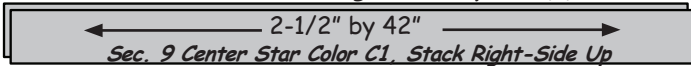
Step 3: Center the (8) pieces under the template layout sheet as shown. Slice through the paper and fabric on Lines 1-4. Clip the templates onto the fabric pieces and place the pieces back into Bag #4 with the foundation papers for Unit BL.



**Accent Center Star Fabric, Color C1
Subcutting Instructions**

**Unit BR & BL: Sec. 9 Center Star,
Template Layout Sheet: Bags #4 & #5**

1. Open and stack the (2) 2-1/2" by 42" strips cut from the Center Star, Accent Color C1, *right-side-up* into (1) stack.



2: Use the *Unit BR & BL Center Star Template Layout Sheets* and cut (4) fabric pieces to match the size and shape of each left and right layout sheet.



3. Slice through the paper and fabric on Line 1. Clip the templates and (8) fabric pieces together for each unit. Place the BL pieces in Bag #4 and the BR pieces into Bag #5.

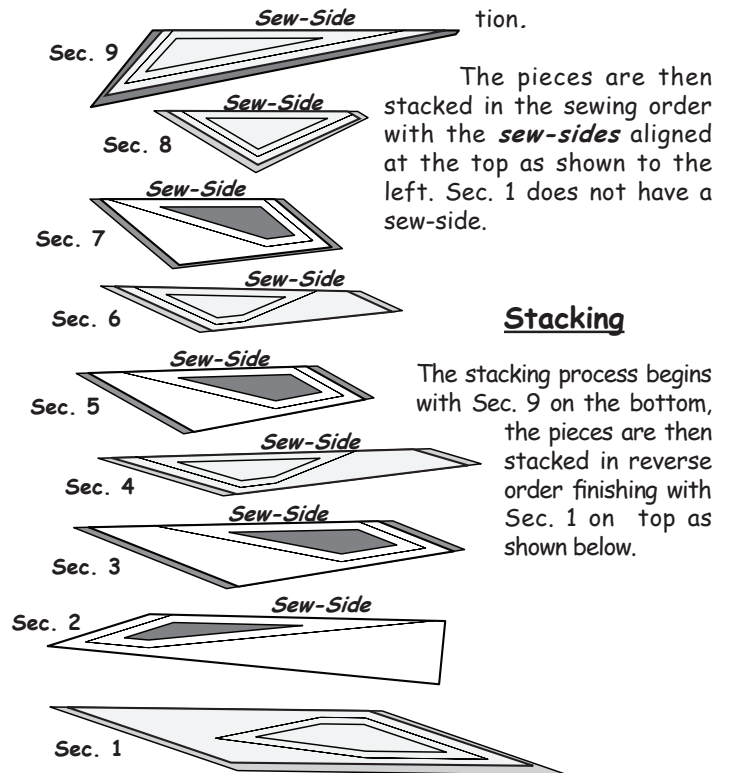


**Preparing and Stacking the Fabric Pieces
for Foundation Paper Piecing
Unit BR, Bag #5**

Before you begin paper piecing match the template and fabric pieces in Bag #5 up with the Sec. #s on the foundation papers. Position your pieces as follows facing *right-side-up*.

Sorting

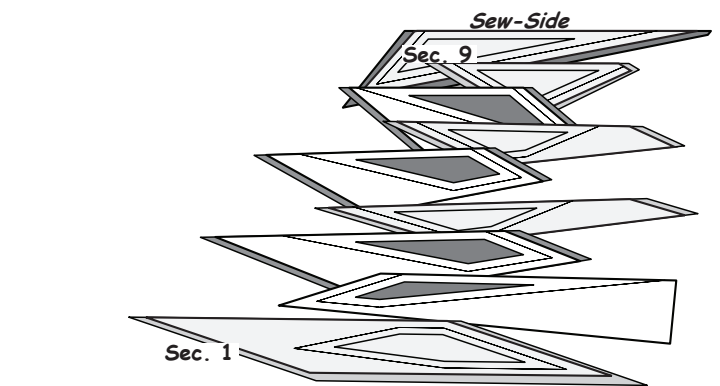
Sort the pieces in chronological order on your table with the templates and fabric pieces facing *right-side-up* for each sec-



tion.
The pieces are then stacked in the sewing order with the *sew-sides* aligned at the top as shown to the left. Sec. 1 does not have a sew-side.

Stacking

The stacking process begins with Sec. 9 on the bottom, the pieces are then stacked in reverse order finishing with Sec. 1 on top as shown below.



**Foundation Paper Piecing
Unit BR, Bag #5**



Note: Place the foundation paper onto a light table. Flip the foundation paper over and trace the dashed lines printed on the front side of the foundation paper, onto the backside of the paper.

