

Pepperdich 2012

Corrections December 2013

Note: NP-189 was renumbered
NP-221 in all future patterns

Corrections for Page 5

angles from Color #12 with one stack of Background Color #2 and the other (4) with a second stack of Background Color #2.

Step 8: Remove the *PDB-1, PDB-2, PDB-3,* and *PDB-4* Template Layout Sheets from Bag #3 and place them on the following stack of 6" x 4" rectangles:

PDB-1 and PDB-2: With Color #11 and Background Color #2.

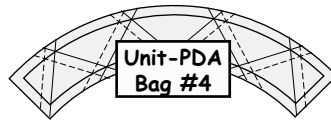
PDB-3 and PDB-4: With Color #12 and Background Color #2

Step 9: Cut each stack on Cut Line 1 and clip the paper templates to the pile of fabric. Place each set back into **Bag #3**.

Unit-PDA: Cutting Instructions: Bag #4 Background Color #3

Step 1: Remove the two *Unit-PDA Background Template Layout Sheets* from Bag #4. Cut (6) 2-1/2" x 42" strips.

Step 2: Stack the strips right-

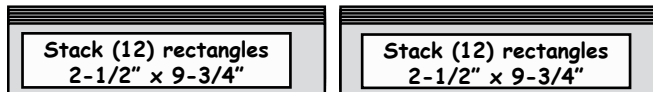


side-up and sub-cut into (4) stacks of (6) 2-1/2" x 9-3/4" rectangles.

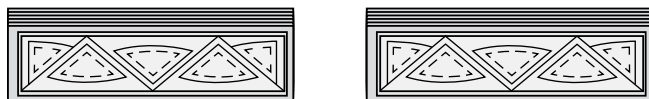
Step 3: Restack the pieces into (2) stacks of (12) rectangles.



Step 4: Place one of the *Unit-PDA Background Template Layout*



Sheets onto each stack.



Step 5: Slice through the Template Layout Sheet and Fabric on Cut Lines 1-4. Clip the section templates to each stack and place back into Bag #4.



Accent Colors #4 & #5

Step 6: Remove the two *Unit-PDA Spike Template Layout Sheets* from Bag #4. Sub cut (1) 2-1/2" x 42" strip from Color #4 and (5) 2-1/2" x 42" strips from Color #5.

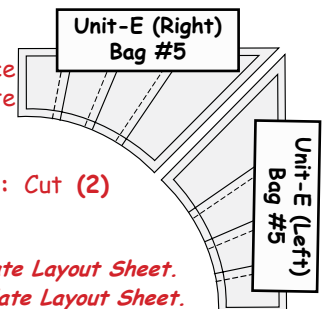
UNIT-E: Border Units: Cutting Instructions for Bag #5:

Background Color #2

Cut the following strips and place with each left and right Template E-1, E2, E3, & E4:

Step 1: Background Color #2: Cut (2) 4-1/2" x 42" strips.

Clip (1) strip to the E1-Left Template Layout Sheet.
Clip (1) strip to the E1-Right Template Layout Sheet.



Step 2: Background Color #2: Cut (2) 3-3/4" x 42" strips. Subcut each strip into two pieces measuring 3-3/4 x 22" and 3-3/4" x 20".

Cut (2) Strips, Background Color #2

Sub-cut (2) 3-3/4" x 22"

Clip (1) 22" strip to each of the E2-Left and E2-Right Template Layout Sheets.

Clip (1) 20" strip to each of the E3-Left and E3-Right Template Layout Sheets.

Sub-cut (2) 3-1/4" x 20"

Step 3: Background Color #2: Cut (1) 3" x 42" strips. Sub-cut the strip into (2) 3" x 21" pieces. Clip (1) 20" strip to each of the E4-Left and E4-Right Template Layout Sheets.

(1) Strip, Background Color #2
Sub-cut (1) 3" by 21" Sub-cut (1) 3" by 21"

Accent Colors #10, #11, #12, #13.

Cut the following strips and place one strip with each of the Left & Right E-Template Layout Sheets:

Step 4: Cut (2) 4-1/2" x 42" strips from Color #10. Clip (1) 42" strip to each of the E1-Left and E1-Right Template Layout Sheets

4-1/2" x 42" Strips, Color, #10

Step 5: Cut (2) 3-3/4" x 32" strips from Color #11. Clip (1) 32" strip to each of the E2-Left and E2-Right Template Layout Sheets.

3-3/4" x 32" Strips, Color #11

Step 6: Cut (2) 3-1/4" x 28" strips from Color #12. Clip (1) 28" strip to each of the E3-Left and E3-Right Template Layout Sheets.

3-1/4" x 28" Strips, Color #12

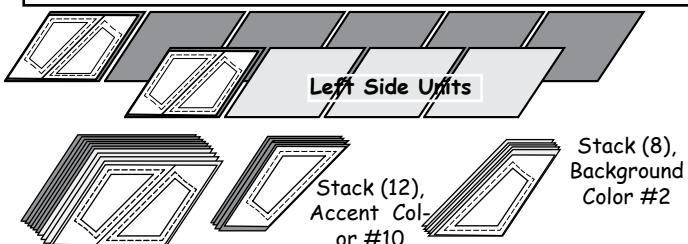
Step 7: Cut (2) 3" x 24" strips from Color #13. Clip (1) 24" strip to each of the E4-Left and E4-Right Template Layout Sheets.

3" x 24" Strips, Color #13

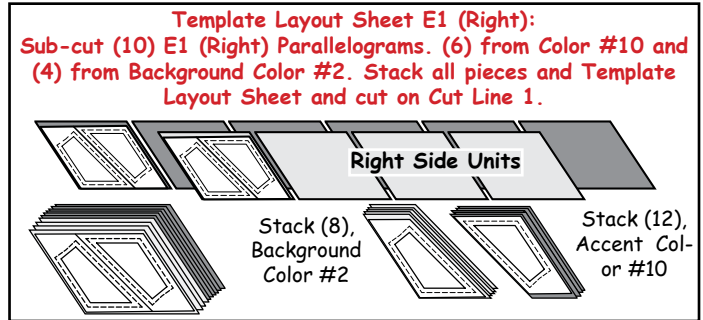
Place the remaining fabric from Colors #10 to Color #13 into Bag #6 and reserve them for your applique.

Sub-cutting the Unit E Template Layout Sheet: Position the layout sheets onto each strip then cut the following pieces listed for each box. [After completing the cutting, the Background Fabrics are placed under one paper template and the Accent Fabrics are placed under the other paper template. Place each stack back into Bag #5.]

Template Layout Sheet E1 (Left):
Sub-cut (10) E1 (Left) Parallelograms. (6) from Color #10 and (4) from Background Color #2. Stack all pieces under the Template Layout Sheet and cut on Cut Line 1.

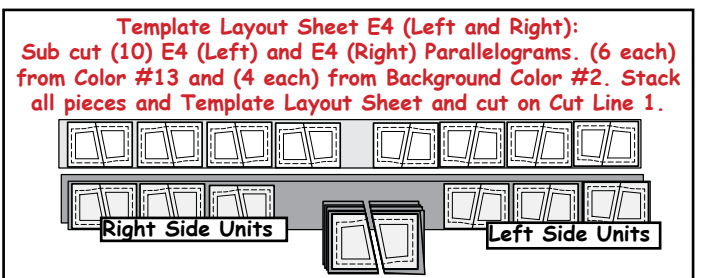
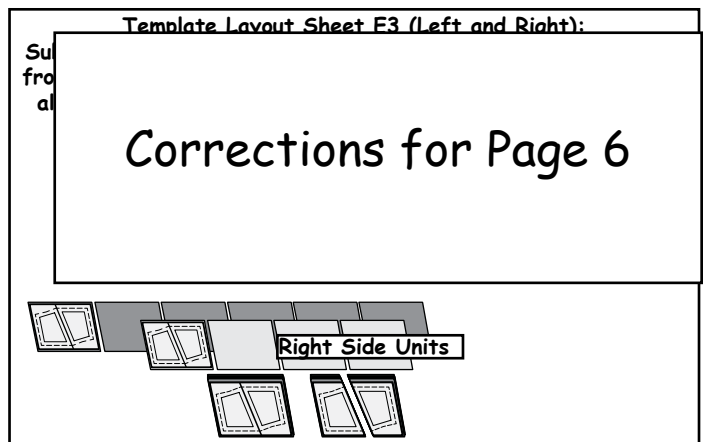
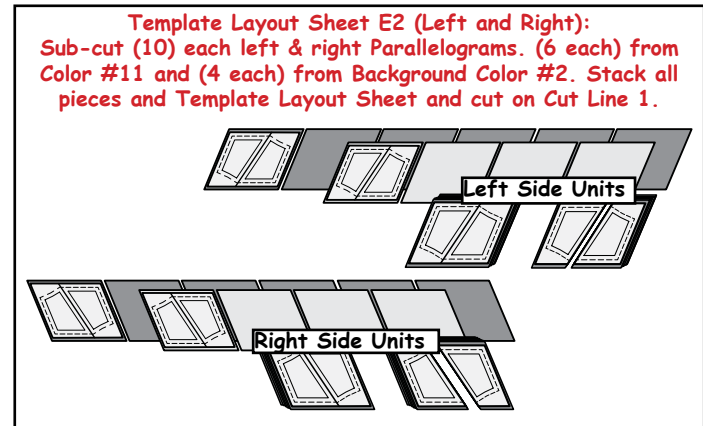


Step 5: Template Layout Sheet E1 (Right) Using **Template Layout Sheet E1 (Right)** cut the following pieces listed in the box below. [After you complete your cutting clip the Background Fabrics under one paper template and the Accent Fabrics under the other paper template. Place each stack back into Bag #5.]



Step 6: Repeat this process with **Template Layout Sheets (E2 Left and Right)** through **E4 (Left and Right)**. Clip the fabric to the paper templates and place each stack back into Bag #5.

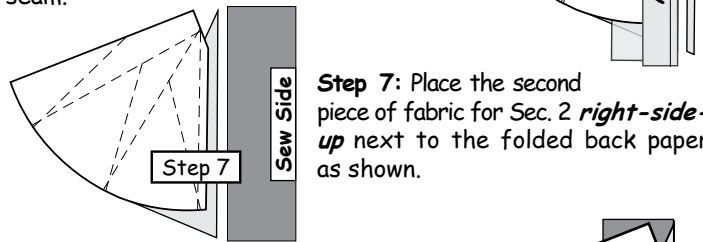
Note: There are less pieces cut from Background Color #2 for the E-Units than there are from the Accent Colors. As a result, some of your clipped stacks of fabric pieces will only have colored fabrics in them.



Step 4: Place the fold template over

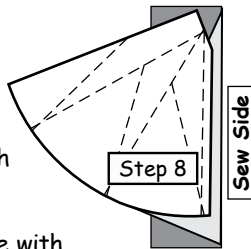


Step 6: Place the **Add-A-Quarter** ruler next to the folded edge on the paper, lip-side down, and trim a quarter-inch seam.

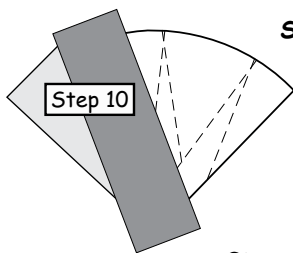


Step 7: Place the second piece of fabric for **Sec. 2** **right-side-up** next to the folded back paper as shown.

Step 8: Lift the foundation paper and slide the second fabric piece under **Sec. 2**. Line the edge of the second fabric up with the trimmed quarter-inch seam.

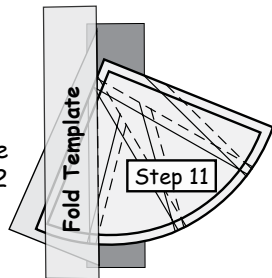


Step 9: Lift both pieces to your machine with the paper. Open the paper and sew on **Line 1**. Start at the top of **Line 1** and sew to the bottom of **Line 1** just off the paper.

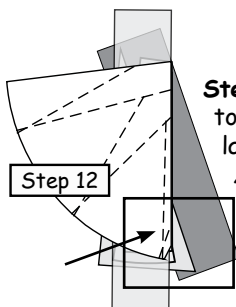


Step 10: Loosen the glue under **Sec. 1**, then flip the paper over and press the fabric pieces to the open position.

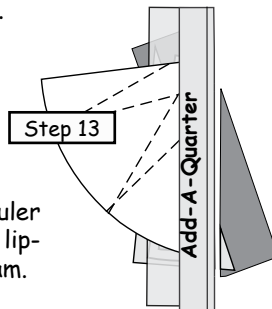
Step 11: Place the fold template over the top of **Sec. 1**, & 2 lining up the edge on **Line 2**.



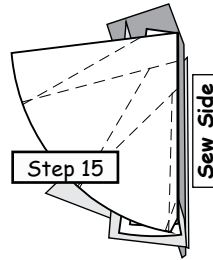
Step 12: Tear the paper on the stitch line, back to the fold template. This allows the fabric to lay flat, making it easier to trim with the **Add-A-Quarter** ruler.



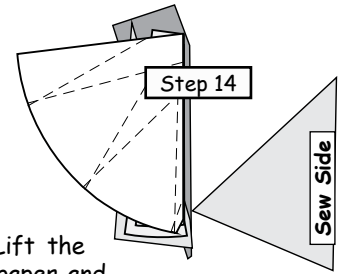
Step 13: Place the **Add-A-Quarter** ruler next to the folded edge on the paper, lip-side down, and trim a quarter-inch seam.



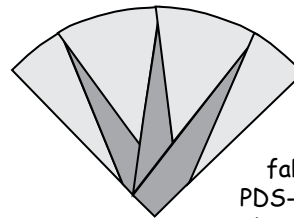
Step 14: Place the third piece **right-side-up** next to the folded back paper as shown.



Step 15: Lift the foundation paper and slide the fabric under **Sec. 3**. Line the sew side up with the trimmed quarter inch seam allowance.



Step 16: Open the paper and sew on **Line 2**. When you are finished sewing, press the fabric open.

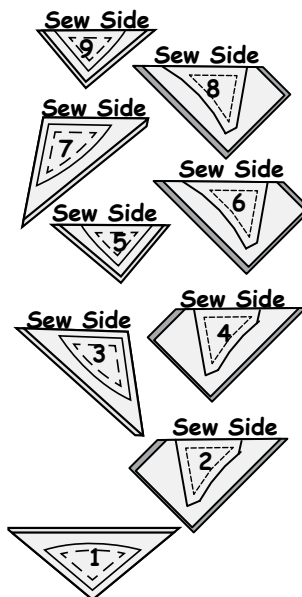


Continue adding the pieces for each section. When the foundation piecing is finished, trim off the excess fabric and foundation paper. Place the PDS-Units back into **Bag #2** with out removing the foundation paper.

*Note: Once you catch onto the steps with foundation paper piecing try setting up your work space for speed piecing. Speed piecing can be accomplished while foundation paper piecing by preparing multiple papers and sewing all of **Sec. 2** to **Sec. 1** before moving to **Sec. 3**, and so forth. This will make your sewing process much faster.*

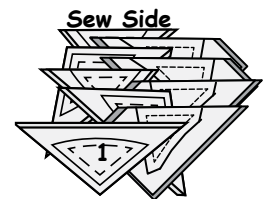
Unit-PDA, Bag #4 Preparing and Stacking the Fabrics For Foundation Paper Piecing

Before you begin paper piecing, match the template and fabric pieces in **Bag #4** up with the **Sec. #s** on the foundation papers. Position your pieces as follows facing **right-side-up**.



Stacking

Stack the template pieces with the sew-sides aligned at the top, facing **right-sides-up**. Starting with **Sec. 9** on the bottom, stack the pieces in descending order finishing with **Sec. 1** on top.

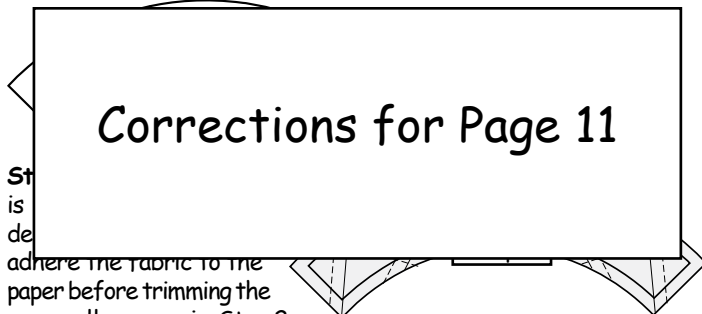
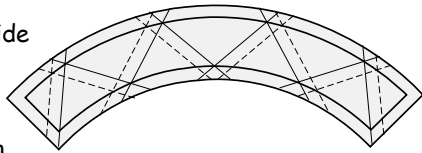


At this point, it might be a good idea to double check that your spike colors are in the correct place in the stack so that all of your spikes are the same color in every unit you are sewing. This will help prevent any mistakes when speed piecing these units.

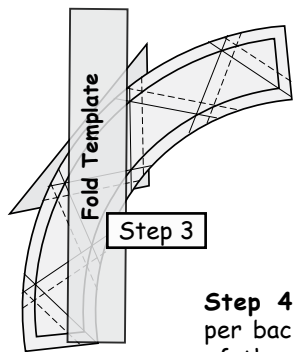
Foundation Paper Piecing, Unit-PDA (24)

Bag #4: Unit-A:

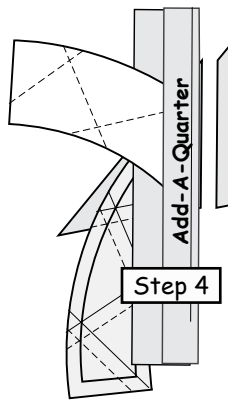
Step 1: Trace the backside of your arcs. This will make it much easier to position the fabric pieces under each section.



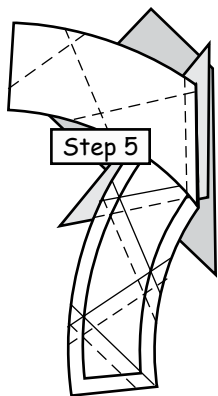
Step 2: Adhere the fabric to the paper before trimming the seam allowance in Step 2.



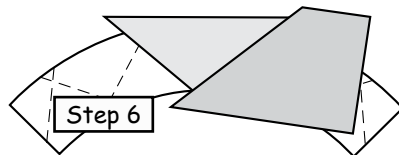
Step 3: Line the edge of the fold template up with Line 1.



Step 4: Fold the paper back over the top of the *fold template* and trim a quarter-inch seam with the *Add-A-Quarter* ruler.



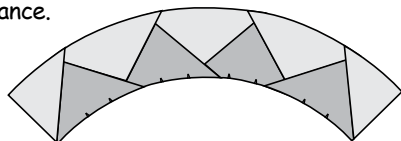
Step 5: Position the second fabric piece *right-side-up* under Sec. 2. Open the paper and sew on Line 1.



Step 6: After sewing your first seam, carefully release the fabric from the paper under Sec. 1 with your finger where you added the glue. Press the fabric as shown and continue adding each piece until the unit is finished.

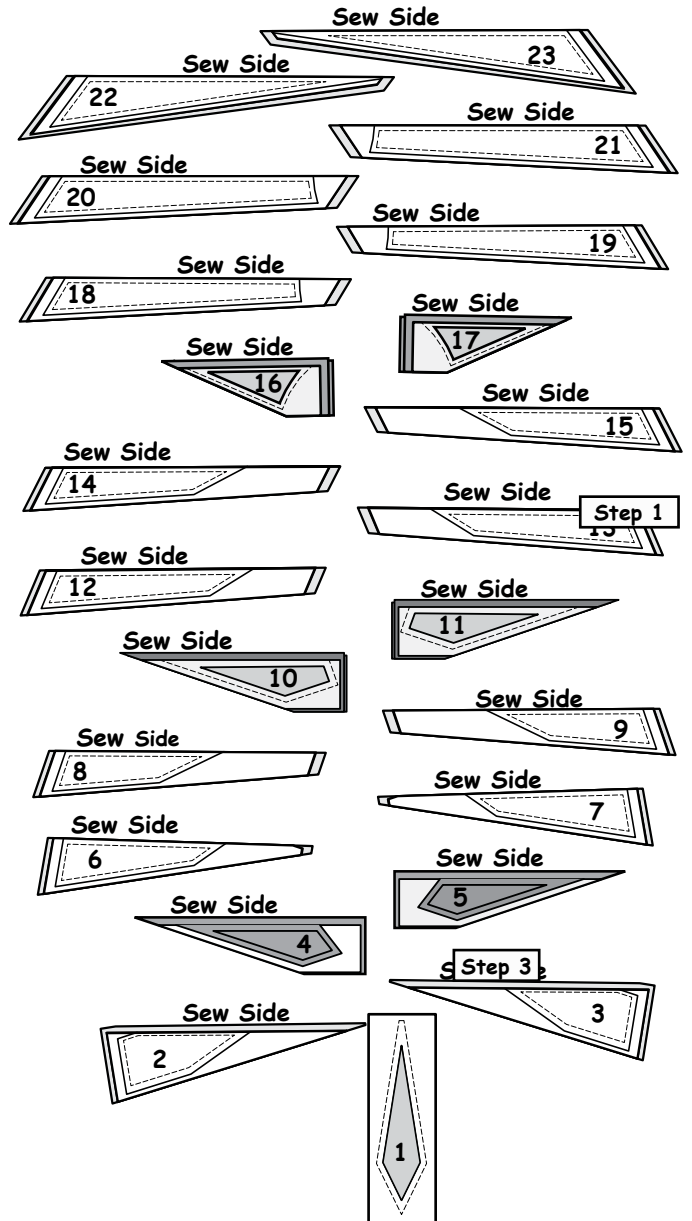
Trim off the excess fabric, from around the edge of the paper. Clip the inside curve (2) times inside each arc. Do not clip more than 1/8" into the seam allowance.

After the pieces are clipped remove the foundation paper. Place the finished units back into Bag #4.



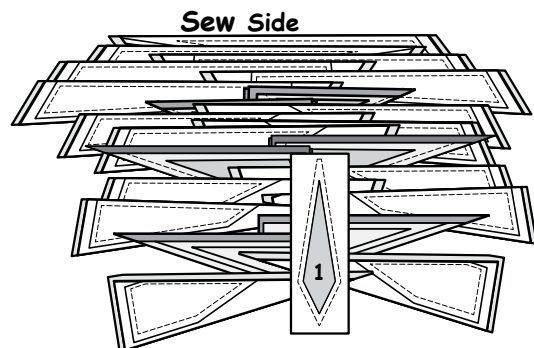
Unit-P, Bag #1 Preparing and Stacking Fabrics For Foundation Paper Piecing

Before you begin paper piecing, match the template and fabric pieces in Bag #1 up with the Sec. #s on the foundation papers. Position your pieces as follows facing *right-side-up*.

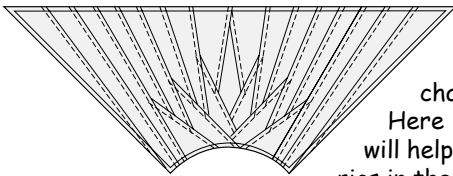


Stacking

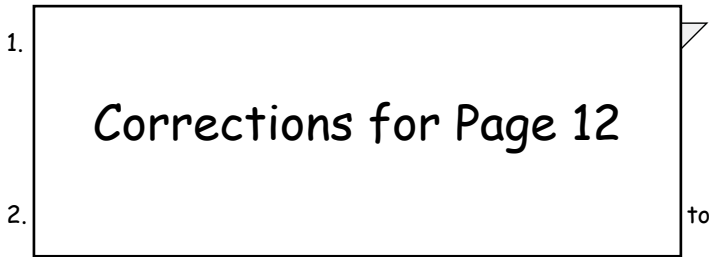
Stack the template pieces with the sew-sides aligned at the top, facing *right-sides-up*. Starting with Sec. 23 on the bottom, stack the pieces in descending order finishing with Sec. 1 on top.



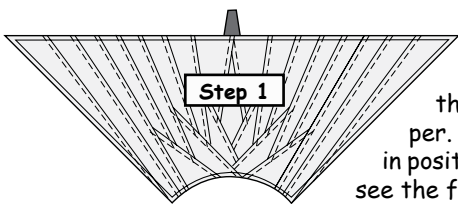
Foundation Paper Piecing Bag #2, Unit-P (4):



The papers for Unit-P are large and can be challenging to work with. Here are a few tricks that will help you position your fabrics in the right location.

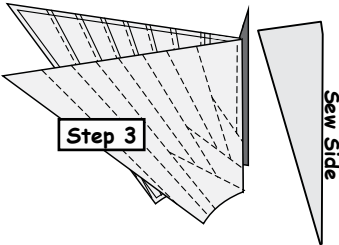
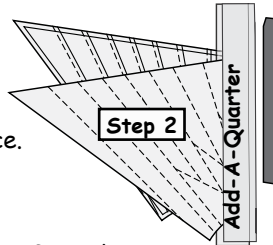


- Once you position the fabric under the papers, pin the fabric strips to the paper to keep them from sliding.



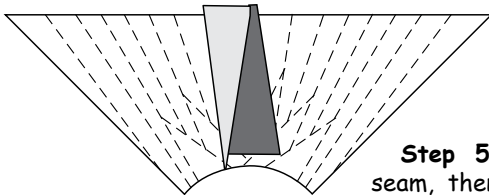
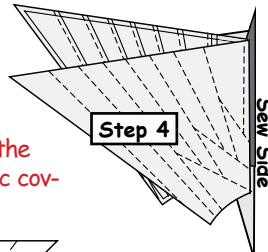
Step 1: Center the first piece of fabric under Section 1 on the backside of the paper. Pin or glue this piece in position and flip over so you see the front side, as shown.

Step 2: Lay the fold template next to Line 1. Fold the paper, back over the fold template on Line 1. Place the **Add-A-Quarter** next to the fold template and trim a 1/4" seam allowance.

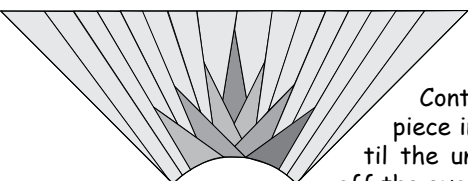


Step 3: Place the piece for Sec. 2 right-sides up on your table, aligning the sew sides for each piece.

Step 4: Lift the foundation paper and slide Fabric #2 right-side up under Sec. 2 with the paper folded back, making sure your fabric covers the underneath side of Sec. 2.



Step 5: Sew your first seam, then carefully release the fabric from the paper under Sec. 1 with your finger where you added the glue. Then press the fabric open.



Continue adding each piece in numerical order until the unit is finished. Trim off the excess paper and fabric.

Place your finished units on a design wall or reserve for laying out your quilt later.

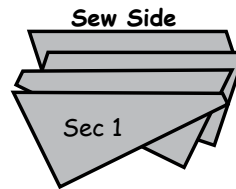
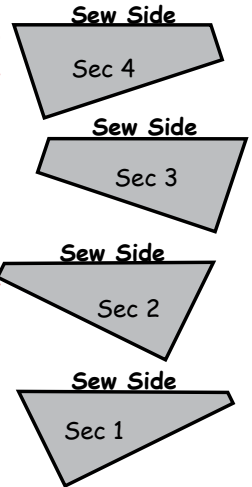
Unit-PDB, Bag #3 Preparing and Stacking the Fabrics For Foundation Paper Piecing

You should have enough fabric pieces cut out of the Accent Fabric #10-#13 to make (8) units and enough fabric cut from your background fabrics to make (12) units.

Match the templates and fabric pieces in Bag #3 up with the Sec. #'s on the foundation papers. Position your pieces as follows facing **right-side-up**.

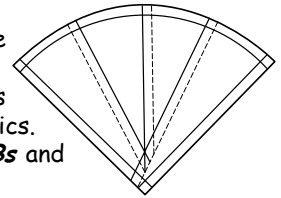
Stacking

Stack the pieces with the sew-sides aligned at the top, facing **right-sides-up**. Starting with Sec. 4 on the bottom, stack the pieces in descending order.



Foundation Paper Piecing Bag #3: Unit-PDB:

This unit is pieced using two separate color ways. One includes all background pieces, while the other includes a color gradation of your border fabrics. There are (12) background **Unit-PDBs** and (8) graded border **Unit-PDBs**.

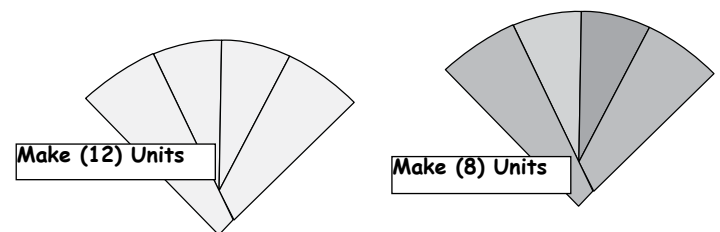


Step 1: Place fabric 1, wrong-side-up, under Sec. 1. Glue is used to adhere the Fabric to the paper before trimming the seam allowance.

Step 2: Line the edge of the fold template up with Line 1. Fold the paper back over the top of the fold template and trim a quarter-inch seam with the **Add-A-Quarter** ruler.

Step 3: Position the second fabric piece right-side-up under Sec. 2. Open the paper and sew on Line 1.

Repeat until the four pieces are sewn to the foundation paper. When the foundation piecing is finished, trim the excess fabric from the foundation papers.



Note: Do not remove the foundation paper.

Unit-E, Bag #5 Preparing and Stacking the Fabrics For Foundation Paper Piecing:

You should have enough fabric pieces cut out to complete (12) each of the left and right units for the Accent Fabrics and enough fabric cut from your background fabrics to make (8) left and right units.

Left Unit



Sec 4

Sew Side



Sec 3

Sew Side



Sec 2

Sew Side



Sec 1

Match the template and fabric pieces in Bag #5 up with the Sec. #s on the foundation papers. Position your pieces as shown for the left and right units.

Right Unit



Sec 4

Sew Side



Sec 3

Sew Side



Sec 2

Sew Side

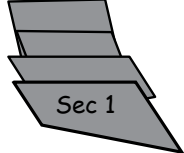


Sec 1

Stacking

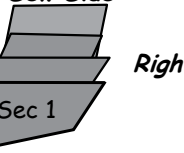
Stack the template pieces in descending order with the sew-sides aligned at the top, facing right-sides-up.

Sew Side



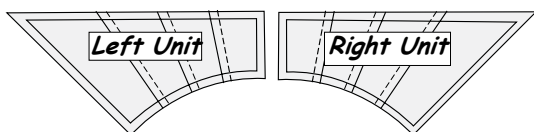
Left Unit

Sew Side



Right Unit

Foundation Paper Piecing Bag #6, Unit-E: Left and Right Pieces:

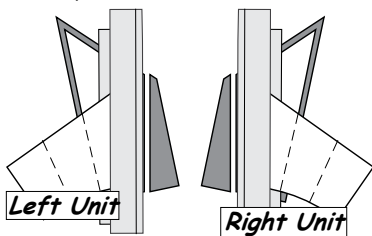


Left Unit

Right Unit

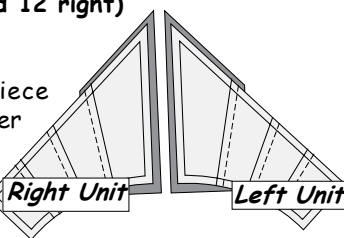
This unit is pieced using two separate color ways. One includes all background pieces, while the other includes a color gradation of your border fabrics. There are (8 left and 8 right) background Unit-Es and (12 left and 12 right) graded border Unit-Es.

Step 1: Your first fabric piece is placed *wrong-side-up* under Sec. 1. Glue is used to adhere the fabric to the paper before trimming the seam allowance in Step 2.



Left Unit

Right Unit

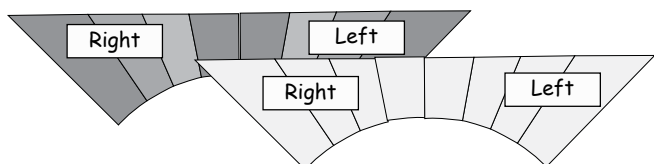


Right Unit

Left Unit

Step 2: The paper is folded back, the fabric is trimmed, and the process is continued to complete the E-Units. When the paper piecing is complete trim off the excess fabric, from around the edge of the paper. Remove the foundation papers under sections 1-4. The

left and right units are joined with a quarter-inch seam, along the edges of section 4.



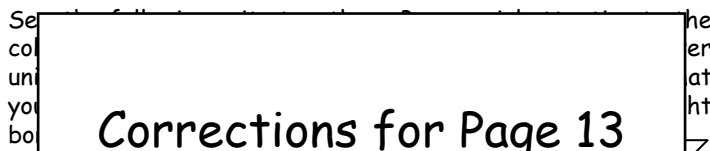
Right

Left

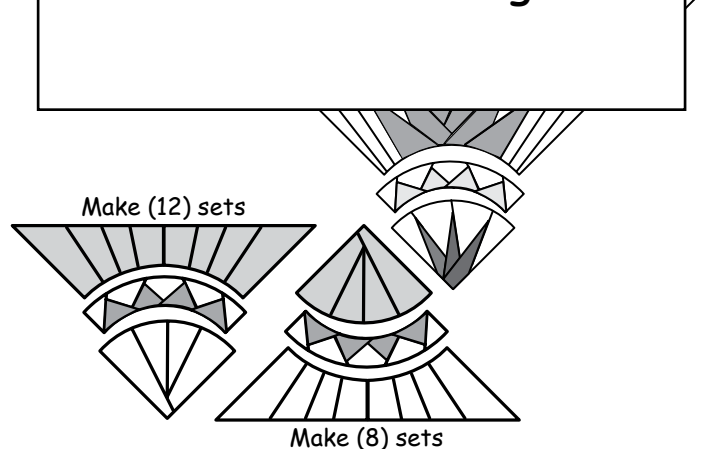
Right

Left

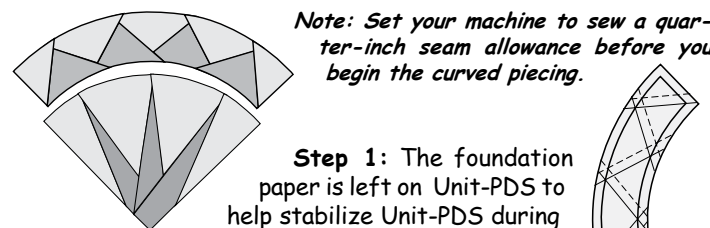
Joining the Units:



Corrections for Page 13

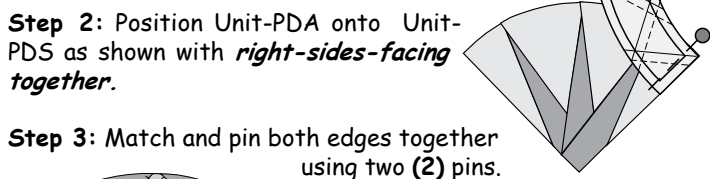


Curved Piecing Unit-PDS to Unit-PDA



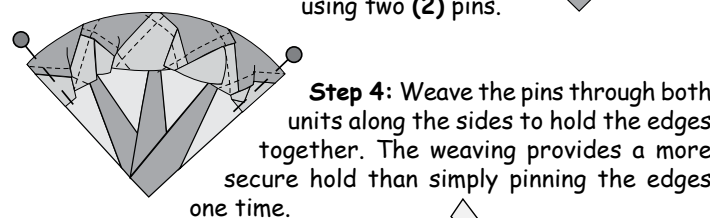
Note: Set your machine to sew a quarter-inch seam allowance before you begin the curved piecing.

Step 1: The foundation paper is left on Unit-PDS to help stabilize Unit-PDS during the curved piecing process.



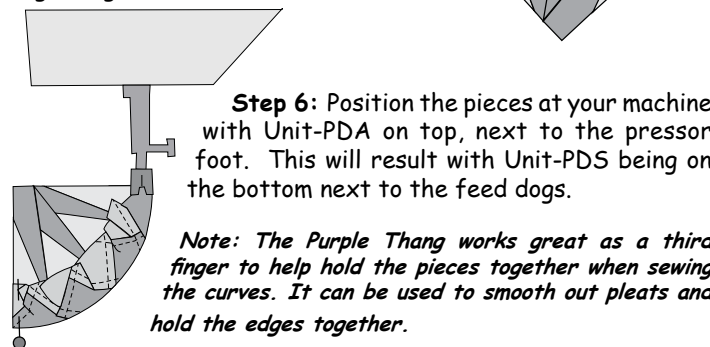
Step 2: Position Unit-PDA onto Unit-PDS as shown with *right-sides-facing together*.

Step 3: Match and pin both edges together using two (2) pins.



Step 4: Weave the pins through both units along the sides to hold the edges together. The weaving provides a more secure hold than simply pinning the edges one time.

Step 5: Using a glue pen, dab a small amount of glue around the perimeter of the convex edge of Unit-PDS and quickly shape, and match, the curved edges together.



Step 6: Position the pieces at your machine with Unit-PDA on top, next to the pressor foot. This will result with Unit-PDS being on the bottom next to the feed dogs.

Note: The Purple Thang works great as a third finger to help hold the pieces together when sewing the curves. It can be used to smooth out pleats and hold the edges together.