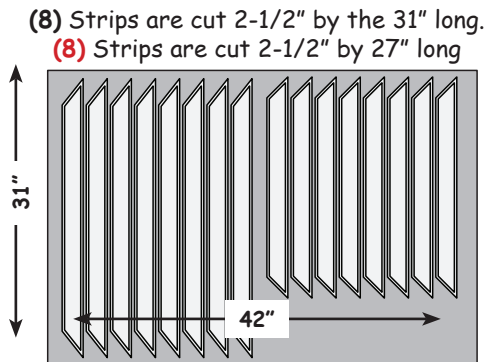


## Accent Borders

In *Chapter 6* we spoke extensively about the *Accent Borders*. Whether you add the borders or you don't add the borders is up to you. If you study the samples on the cover pages you will find that most of the *69" by 69"* quilts were finished without adding the *Accent Border* and all the *98" by 98"* quilts were finished with the border. If you choose to add the borders then you will need to complete the following steps below. *[If you don't plan to add the borders then jump to the top of Page 6].*

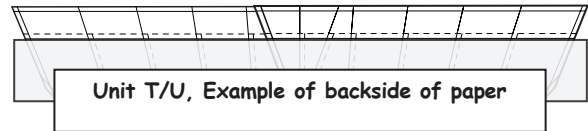
**Cutting the Accent Strips:** The strips are cut down the selvage edge of your fabric.



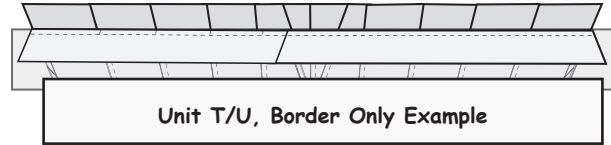
Additional yardage is needed for accent strips to make queen layout. Please refer to Chapter 8, and queen yardage chart.

*Note: Pay attention to the way you cut your strips. If you cut the strips across the selvage from edge to edge you will run out of fabric.*

1: Flip your units *paper-side-up*, place a fold template along the perpendicular lines (*Lines 7/5*) that runs lengthwise through *Units-T/U* shown below.



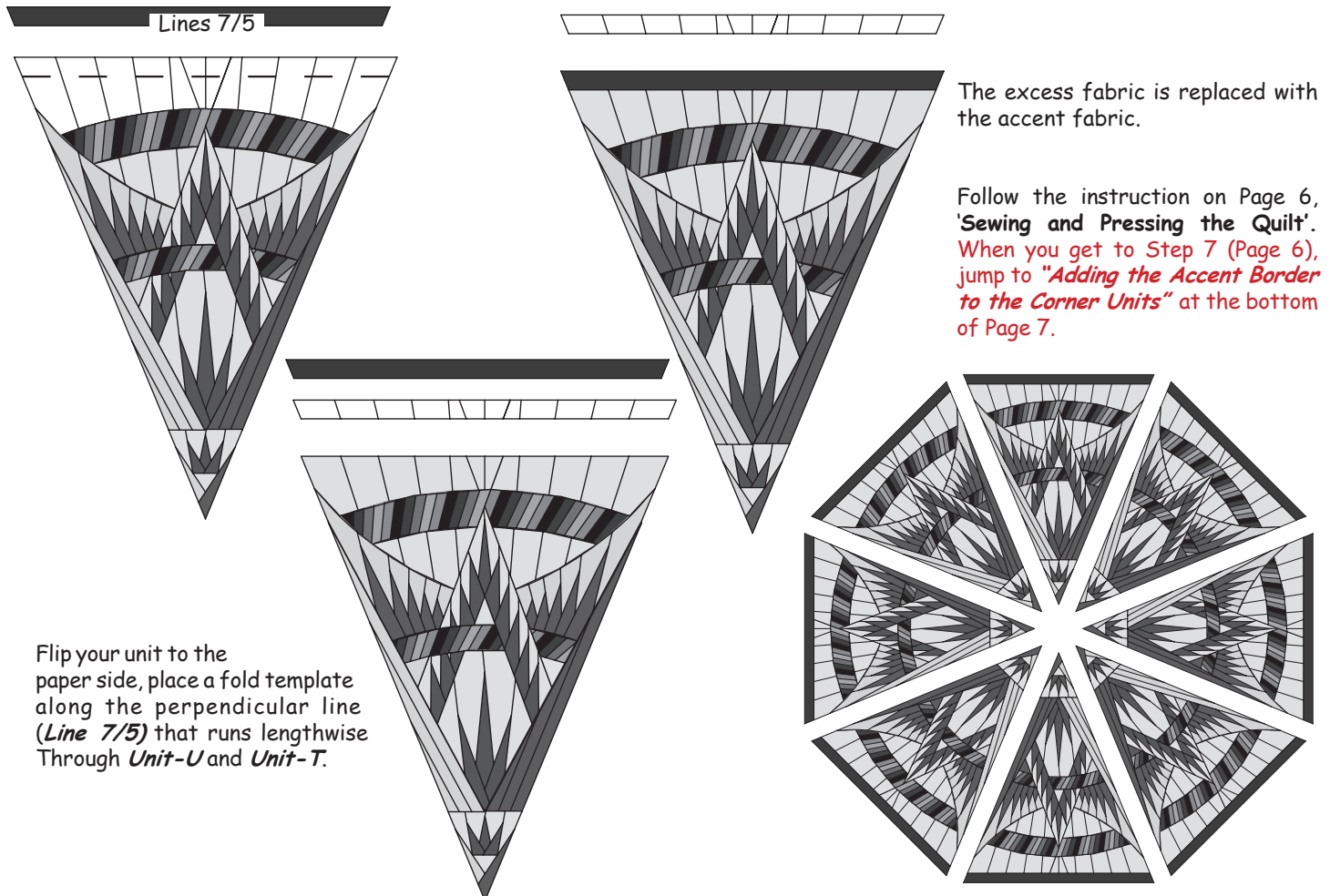
2: Fold the paper over your fold template, tearing the paper gently away from the seams until the paper is free to fold back along the entire length of the line. Place the *Add-A-Quarter* ruler next to the folded back paper and trim a quarter-inch seam.



3: Place the *Accent Inner Border* strips *right-side-up* next to the folded back paper and lift the foundation unit, slide the border under the paper. Line up the edges, pin the strips in place and sew on the line.

4: Flip the fabric over to the backside of the paper again. Fold back what paper is left and trim the *Accent Borders* to the exact size of the paper.

The foundation paper can now be removed from the backside of the paper under *Unit-T/U*.



Flip your unit to the paper side, place a fold template along the perpendicular line (*Line 7/5*) that runs lengthwise through *Unit-U* and *Unit-T*.