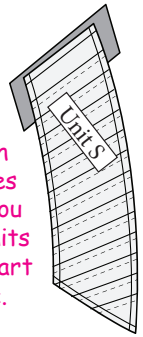


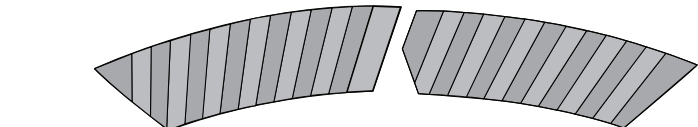
**Foundation Paper Piecing Units-S and R**  
**Bag #11**

The process for *Units-R & S* is the same as the process previously used to complete *Unit-H*. I have included two graphics to get you started with the first two pieces. **Glue a small swatch on each unit before you start sewing to make sure the pieces**



**are located where you want them to be. Units R and S do not start with the same fabric.**

Press and trim the pieces to complete your units. Place the pieces into Bag #10. Do not remove the foundation paper.



**Optional!!! Adding an Accent Strip to the Rope**

*Piecing Option 2, with Flange:* The sample made by Linda Crouch at Tennessee Quilts on the cover page of Booklet 2 was pieced a little different than the technique used for these instructions. A folded flange was inserted in between the fabric for each section.

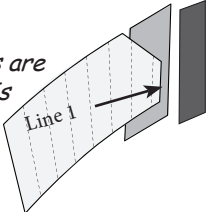
The strips used to make the flange were cut 1" wide. Random lengths of strips were used then subcut into 3-1/2" length. Each strip was pressed in half lengthwise bringing the raw edges together.

*Adding the Flange:* Follow the foundation paper piecing steps for Unit-H. The flange is added to your foundation paper between Steps 4 and 5. The raw edges of the flange are lined up to the trimmed edge of the fabric for Sec. 1. Glue is used to hold the pieces in place. Return to Step 5 and continue adding the fabric for Sec. 2.



*Piecing Option 3, Sewing on the Dash Lines:* The sample made by Ginny Radloff on the cover page of Booklet 3 was pieced by sewing an accent strip in between each fabric. This was made possible by using the dashed lines as a second sew line. The sew line used for the accent strip is the Solid Line (Line 1). The sew line for the section fabric is the Dashed Line that offset the sew line by a quarter inch.

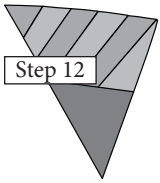
*Adding the Accent Strips:* The accent strips are cut 1-1/4" by 3-1/2". The foundation piecing is completed up to Step 4 for Unit-H. The accent fabric is sewn to the paper on Line 1.



The paper is flipped over and fabric is pressed. The fold template is lined up to the dashed line next to Line 1. The paper is folded back and the accent fabric is trimmed with the Add-A-Quarter ruler.

The fabric pieces for Sec. 2 are now added to the paper by sewing on the Dashed Line. This process is repeated for each line.

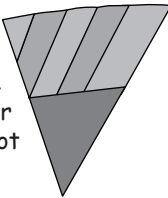
Note. In some cases additional accent strips may need to be added to the beginning of each strip before you join the units.



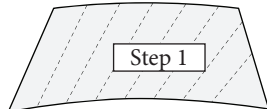
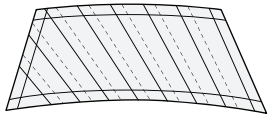
**Step 12:** Press and trim the pieces to complete your units. Place the pieces into Bag #10. Do not remove the foundation paper.

**Foundation Paper Piecing Unit-I, Bag #10**

The papers for *Unit-I* are a mirror image of *Unit-G*. Repeat all the steps outlined in the previous section. The finished unit is shown here for reference. Trim the pieces to complete your units and place the pieces into Bag #10. Do not remove the foundation paper.

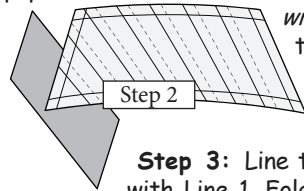


**Foundation Paper Piecing Unit-H, Bag #10**

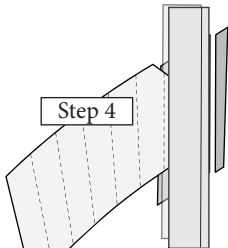
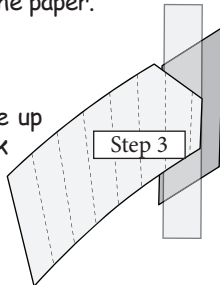


**Step 1:** Place the foundation paper onto a light table and trace the dashed lines onto the backside of your first piece.

**Step 2:** Place a small amount of fabric glue on the backside of the paper under Sec. 1. Position the first piece of fabric under Sec. 1 wrong-side-up and glue the fabric onto the backside of the paper.

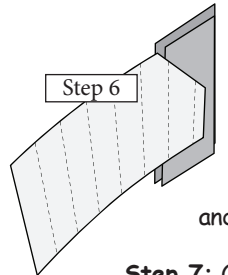
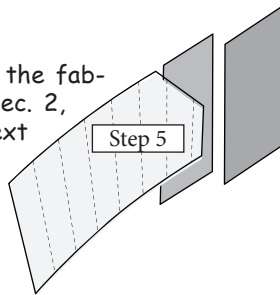


**Step 3:** Line the fold template up with Line 1. Fold the paper back over the top of the fold template.



**Step 4:** Place the Add-A-Quarter ruler next to the folded back paper and trim a quarter-inch seam allowance.

**Step 5:** Place the fabric piece for Sec. 2, right-side-up next to the folded back paper.



**Step 6:** Lift the foundation paper and slide the fabric under Sec. 2.

**Step 7:** Open the paper, and sew on Line 1.

**Step 8:** Loosen the glue under Sec. 1. Flip the paper over and press the fabric.

Continue adding each piece until the piecing is finished. Press and trim the pieces to complete your units. Place the pieces into Bag #10. Do not remove the foundation paper.

