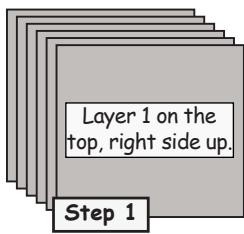
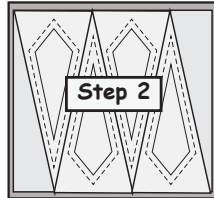


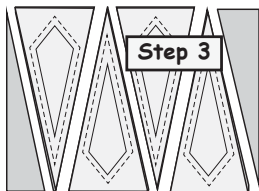
### Accent Unit-CS-1 Bag #1



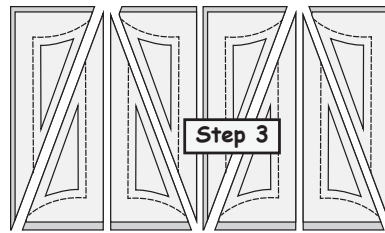
**Step 1:** Re-stack the (6) 7-3/4" by 8-1/2" medium color rectangles from colors #4, #5, and #6, *right-side-up*. Rectangles labeled Layer 1 should be on top with Layer 3 on the bottom.



**Step 2:** Position the *Accent Unit-CS-1 Template Layout Sheet* onto the (6) 7-3/4" by 8-1/2" rectangles.



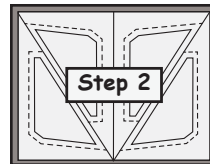
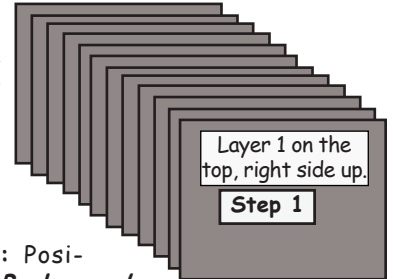
**Step 3:** Slice through the paper and fabric on Lines 1-5, in order. Clip the templates and fabric pieces together for each section and place back into Bag #1 with the foundation papers for Center Spikes.



**Step 3:** Slice through the paper and fabric on Lines 1-7, in order. Clip the templates and fabric pieces together for each section and place back into Bag #1 with the foundation papers for Center Spikes.

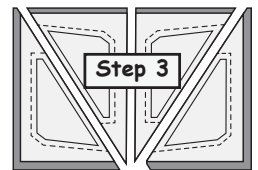
### Background Unit-CS-2 Bag #1

**Step 1:** Re-stack the (12) 7" by 9" rectangles from dark colors #1, #2, and #3, *right-side-up*. Rectangles labeled Layer 1 should be on top with Layer 3 on the bottom.



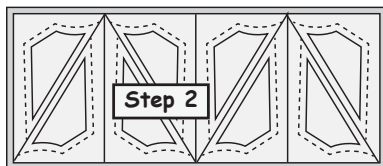
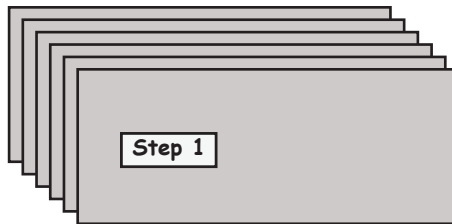
**Step 2:** Position the *Background Unit-CS-2 Template Layout Sheet* onto the (12) 7" by 9" rectangles.

**Step 3:** Slice through the paper and fabric on Lines 1-3, in order. Clip the templates and fabric pieces together for each section and place back into Bag #1 with the foundation papers for Center Spikes.



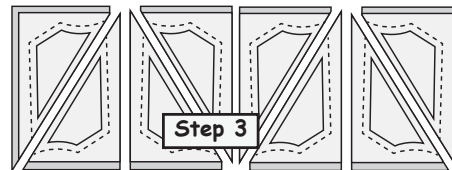
### Accent Unit-CS-3 Bag #1

**Step 1:** Re-stack the (6) 5-3/4" by 13-1/2" light rectangles from color #7, *right-side-up*.

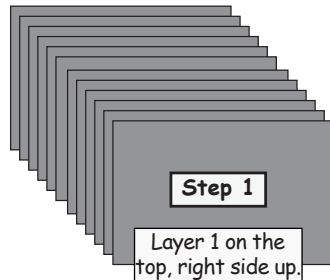


**Step 2:** Position the *Accent Unit-CS-3 Template Layout Sheet* onto (6) 5-3/4" by 13-1/2" rectangles.

**Step 3:** Slice through the paper and fabric on Lines 1-7, in order. Clip the templates and fabric pieces together for each section and place back into Bag #1 with the foundation papers for Center Spikes.

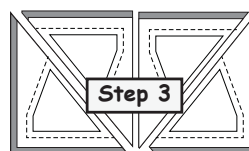
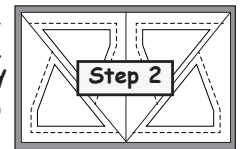


### Background Unit-CS-4 Bag #1



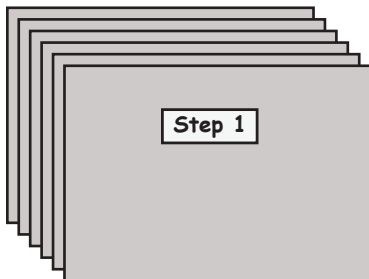
**Step 1:** Re-stack the (12) 8-1/4" by 5-1/4" rectangles from dark colors #1, #2, and #3, *right-side-up*. Rectangles labeled Layer 1 should be on top with Layer 3 on the bottom.

**Step 2:** Position the *Background Unit-CS-4 Template Layout Sheet* onto the (12) 8-1/4" by 5-1/4" rectangles.

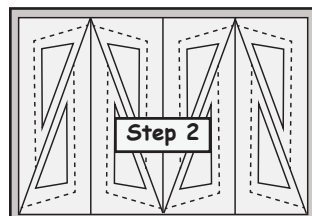


**Step 3:** Slice through the paper and fabric on Lines 1-3, in order. Clip the templates and fabric pieces together for each section and place back into Bag #1 with the foundation papers for Center Spikes.

### Accent Unit-CS-5 Bag #1

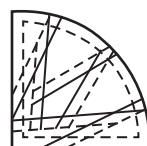


**Step 1:** Re-stack the (6) 6-3/4" by 10" light rectangles from color #8, *right-side-up*.



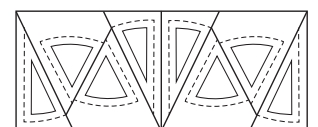
**Step 2:** Position the *Accent Unit-CS-5 Template Layout Sheet* onto (6) 6-3/4" by 10" rectangles.

### Bag #2: Unit-M



Cut out (32) Unit-M Foundation Units.

Background Unit-M



Cut out (2) copies of the Melon Unit-M Template Layout Sheet