

1: Always press on the backside of the paper, the side with no printing. This will keep the ink off the bottom of the iron. Protect your ironing board by placing a strip of muslin over your board while working on foundation paper.

2: Don't stack the foundation papers on top of each other when pressing the seams. If you do, you may press ink marks into the fabric directly under the piece you are pressing. The best way to avoid this is to press one piece, set it to the side, and then press the next piece. Steam may cause the ink to come off easily and may also shrink the paper a little, so don't use too much steam. A little steam is okay. Just be careful! If the paper curls in the pressing process, turn the temperature down on the iron just a bit and adjust the steam.

**Template Pieces:** The fabric strips are wider than the section they were designed to cover on the foundation paper. If you find a strip does not cover the section it was intended to cover, it means you have done something wrong. It could be one of several things.

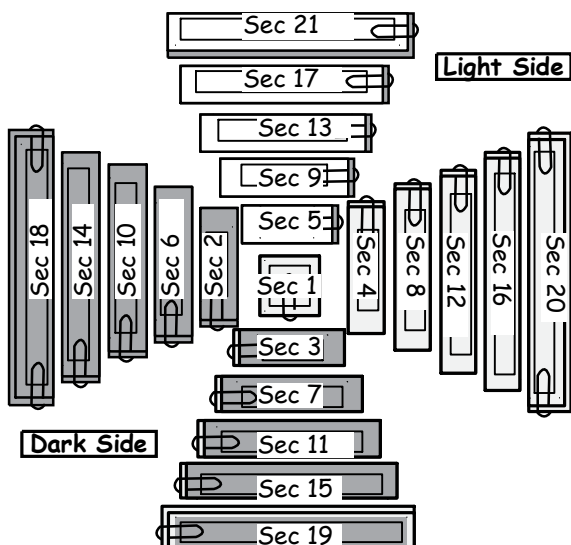
1. The fabric strip may have been positioned incorrectly before sewing it onto the foundation paper.
2. You may have cut the fabric strip incorrectly by cutting it too narrow.
3. You may have forgotten to fold and trim the quarter-inch seam on the fabric pieces, previously sewn onto the foundation papers before adding the strip.

Whatever the reason, remember, mistakes can be corrected.

### Log Cabin Unit LC, Preparing and Stacking the Fabrics For Foundation Paper Piecing

Before you begin paper piecing your Log Cabin Unit LC, you will need to sort your fabric pieces in each bag to go with each foundation paper unit. To accomplish this, simply organize your Sections as shown in the graphic below on a flat surface. Shuffle the Section Template paper on each section to the bottom of each stack. Since you have presorted your fabric, you simply need to take the top piece off of each pile and clip all (21) pieces to one of the foundation units. Repeat this process for each of the (5) units in each of your five bags and place each stack back into the respective bag to prepare for sewing.

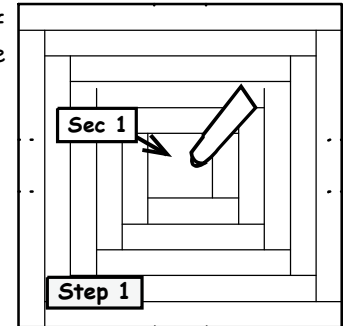
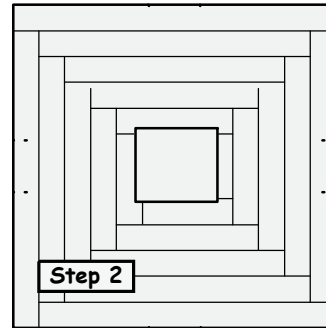
### Graphic Updated with Proper Section #s



### Foundation Paper Piecing, Unit LC (25 Units) Bag #1 to Bag #5

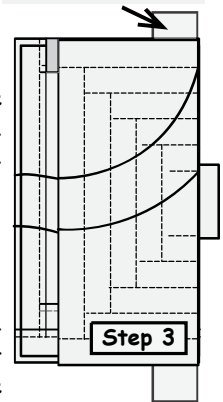
*Note: If you are new to foundation paper piecing, turn the foundation paper over and trace the dashed lines on the backside of your first piece.*

**Step 1:** Place a small amount of fabric glue on the **backside** of the foundation paper under Sec. 1.

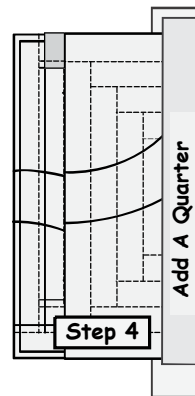


**Step 2:** Glue the **wrong-side** of the first fabric piece to the backside of the paper under section 1.

#### Fold Template

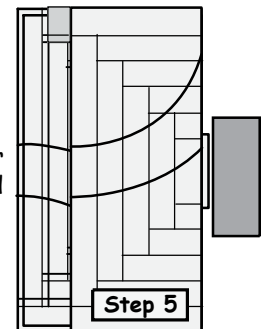
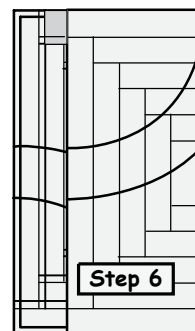


**Step 3:** Place the fold template over the top of Sec. 1, lining the edge up to Line 1. Fold the paper back over the fold template.



**Step 4:** Place the Add-A-Quarter ruler next to the folded edge on the paper, lip-side down, and trim a quarter-inch seam.

**Step 5:** Place the second piece of fabric for Sec. 2 **right-side-up** next to the folded back paper as shown.



**Step 6:** Lift the foundation paper and slide the second fabric piece under Sec. 2. Line the edge of the second fabric up with the trimmed quarter-inch seam.

**Step 7:** Lift both pieces to your machine with the paper. Open the paper and sew on Line 1. Start at the top of Line 1 and sew to the bottom of Line 1 just off the paper.