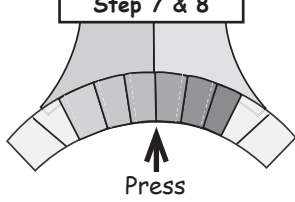
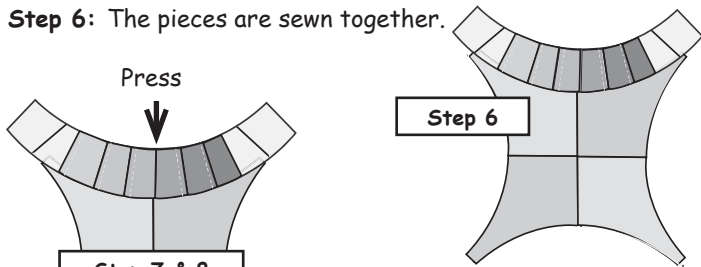


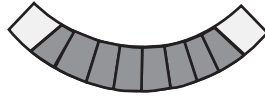
Step 6: The pieces are sewn together.



Step 7: Another Unit-B is sewn on the opposite side of the center section.

Step 8: Press the Unit-B arc toward the center section.

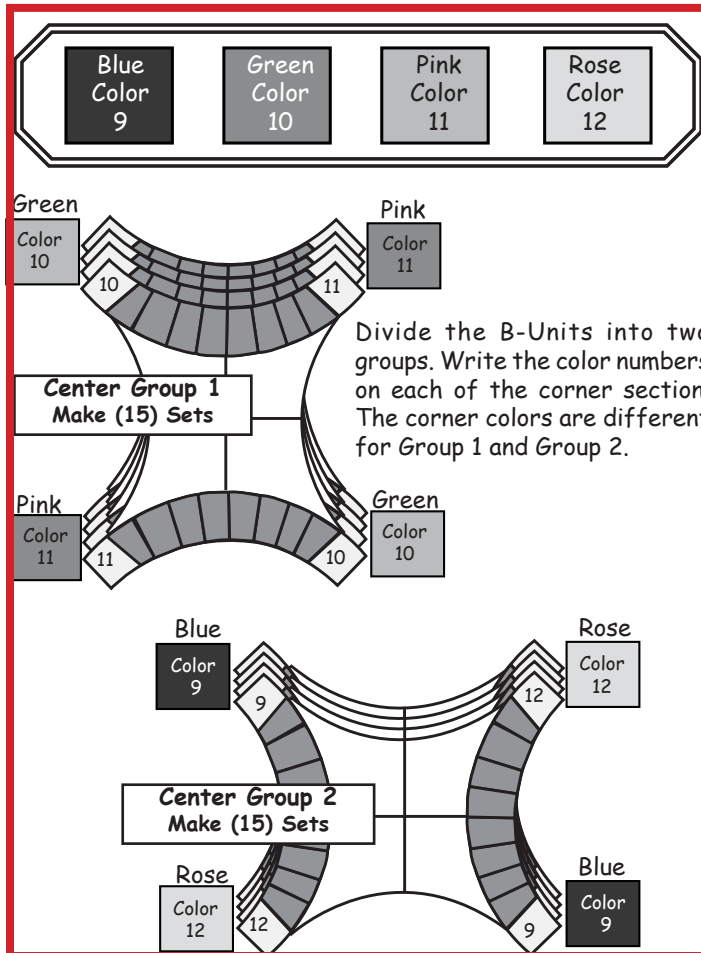
Note: You should have (11) single B-Units left over. These are used to finish the scalloped edge pieces.



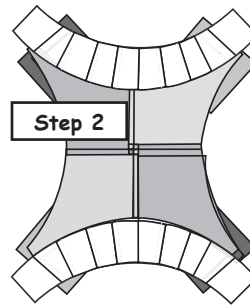
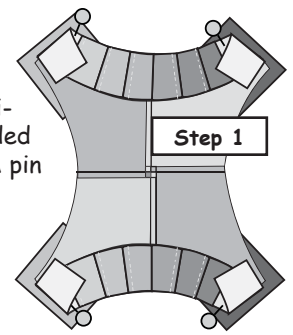
Finishing the Corner Sections

Choosing the Corner Fabrics: A *four-patch* is created at the intersection where the (4) corner section join. I generally use (4) colors, to build the *four-patches*. The corner pieces are cut from the medium and dark accent fabrics listed in the yardage requirements.

Colors 9, 10, 11, & 12: In Bag #5 you should have (3) 2-1/2" by 42" strips cut from each of the (4) corner fabric. Sub-cut the strips into (126) pieces, each measuring 2-1/2" by 3". Forty-two (42) pieces are cut from each of the four colors.

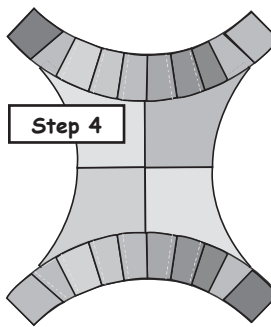
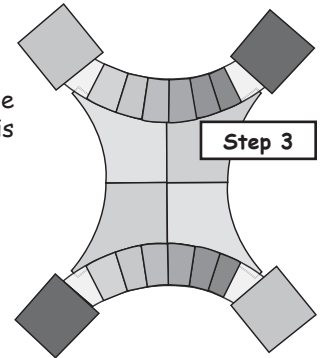


Step 1: The corner pieces are sewn under Sec.'s 9 & 10. Fold back the foundation papers on Lines 8 & 9. Position the corner pieces under the folded back corner sections on each piece. A pin is used to pin the fabrics in place.



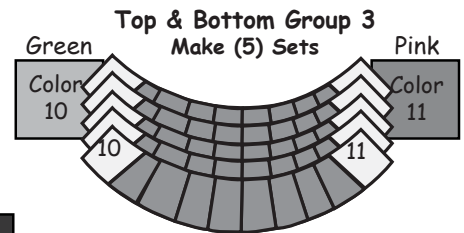
Step 2: Fold open the papers and sew on the lines to complete the paper piecing for the corners.

Step 3: The corner pieces are pressed, then the excess fabric is trimmed off around each corner.

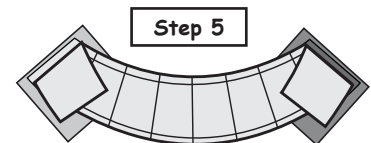
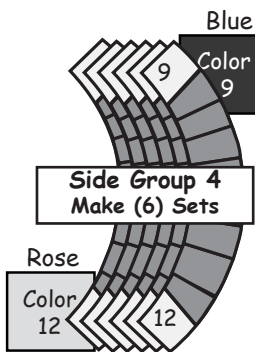


Step 4: The foundation papers are removed from each B-Units in Groups 1 & 2.

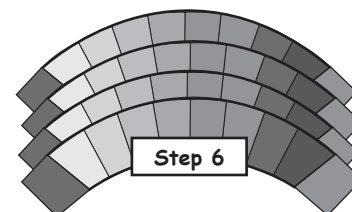
Scalloped Edge Pieces



Step 5: The corner fabrics are sewn under the folded back corner sections to complete the paper piecing on both Groups 1 & 2.



Step 6: The corner pieces are pressed and trimmed around each corner.



Step 7: Remove the foundation papers from the B-Units in Group 3 & 4.