

Bag #4:
Templates D1 and D2:
Unit-D: Foundation Papers

Quilt size: 58" by 58" 4 left and 4 right Units
 Quilt size: 70" by 70" 6 left and 6 right Units
 Quilt size: 96" by 96" 8 left and 8 right Units



Bag #5: Center and Melon Templates.

General Information before Cutting your Fabric

Cutting Fabric: Cutting instructions for the fabric pieces have been written and separated for each foundation unit. After the cutting is complete for each unit, place the fabric pieces with each template into individual small bags. Then place the small bags into the appropriate large bags for each unit.

Templates: Always check the cutting information on each template before cutting your fabric strips. Some templates require left and right pieces. When cutting left and right pieces, fabrics must be placed with wrong sides or right sides together before cutting.

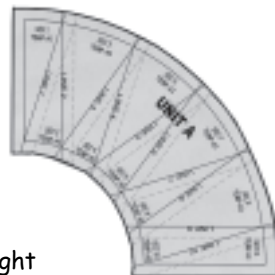
Note: *If you are using batiks you may not recognize a right or wrong side to the fabric. Either side is fine. Just cut out the correct number of pieces required.*

Graphics: I have included graphics for each template in the cutting instructions. These graphics demonstrate how to position the templates on the fabric strips before cutting. Each graphic also tells you how many pieces can be cut from a 42" strip. If you are cutting your pieces from a variety of fabrics as I did on the cover, only cut out the actual number of pieces needed for that template. Cutting shorter strips from several fabrics is the best way to accomplish this. Stack the strips as needed to yield the correct number of pieces for each template. This will reduce your cutting time tremendously.

Note: *Remember the templates were designed for foundation paper piecing which results in sufficient room to allow for minor cutting errors. As a result, accuracy is not a factor when cutting the fabric pieces. Don't be afraid to stack the fabrics and cut several layers at a time.*

Cutting Instruction for Unit-A

Templates A1, A2, and A3 are used to cut the pieces for Unit-A. Place the following fabric pieces into Bag #1. I have included two cutting options for the dark background. Only choose one option.

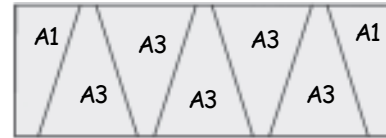


Template A1 and A3:

Dark Background Fabric: If using eight background colors, cut the following 4" by 12" rectangles from four of the eight background fabrics listed at the top of the next column.

Size: 58" by 58" Cut 3 rectangles from four colors each: 12 rect.
Size: 70" by 70" Cut 6 rectangles from four colors each: 24 rect.
Size: 96" by 96" Cut 4 rectangles from four colors each: 16 rect.

These rectangles are used to cut the background pieces for both Templates A1 and A3. The A1 pieces must be opposites. Cutting an extra A3 piece will force the A1 pieces to become opposites without folding the fabric.



Each rectangle yields enough fabric for one unit.

Template A2: Light Fabrics: Cut one 4" by 21" strip from each of the eight light fabrics. Crosscut the strips into the following number of pieces using Template A2.

Size: 58" by 58" Cut 8 pieces from each color: 60 pieces.
Size: 70" by 70" Cut 15 pieces from each color: 120 pieces.
Size: 96" by 96" Cut 10 pieces from each color: 80 pieces.



One 4" by 21" strip yields 15 pieces.

Optional Cutting Instructions if using one Background Fabric instead of eight for Templates A1 and A3:

If you are using one background fabric cut your strips across the grain line. Leave the fabrics strips folded with wrong sides together.

Template A1: Dark Background Fabric: Cut the following 4" strips from your background fabrics. Crosscut the strips as shown below using Template A1.

Size: 58" by 58" Cut 1 strip: Cut 12 left and 12 right pieces.
Size: 70" by 70" Cut 2 strips: Cut 24 left and 24 right pieces.
Size: 96" by 96" Cut 2 strips: Cut 16 left and 16 right pieces.



One 4" strip yields 32 pieces.

Template A3: Dark Background Fabric: Cut the following 4" strips from your background fabrics. Crosscut the strips into the following pieces as shown below using Template A3.

Size: 58" by 58" Cut 3 strip: Cut 48 pieces.
Size: 70" by 70" Cut 5 strip: Cut 96 pieces.
Size: 96" by 96" Cut 3 strip: Cut 64 pieces.

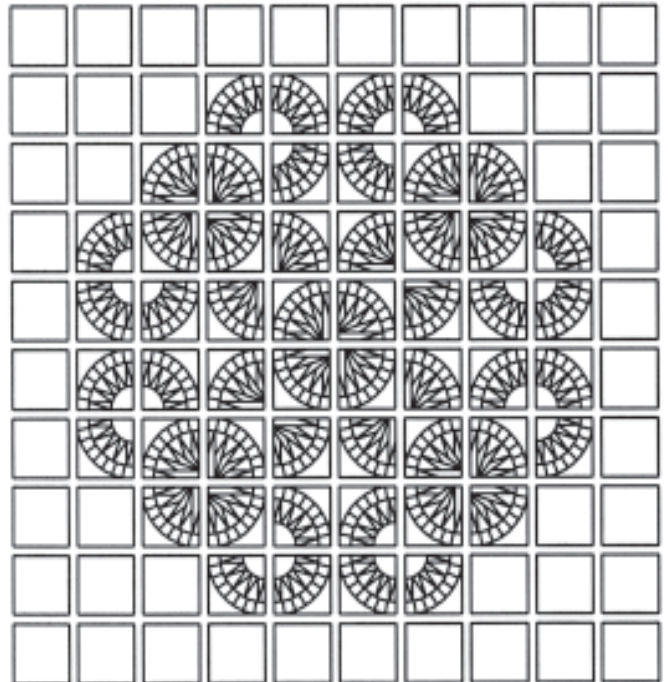


One 4" strip yields 22 pieces.

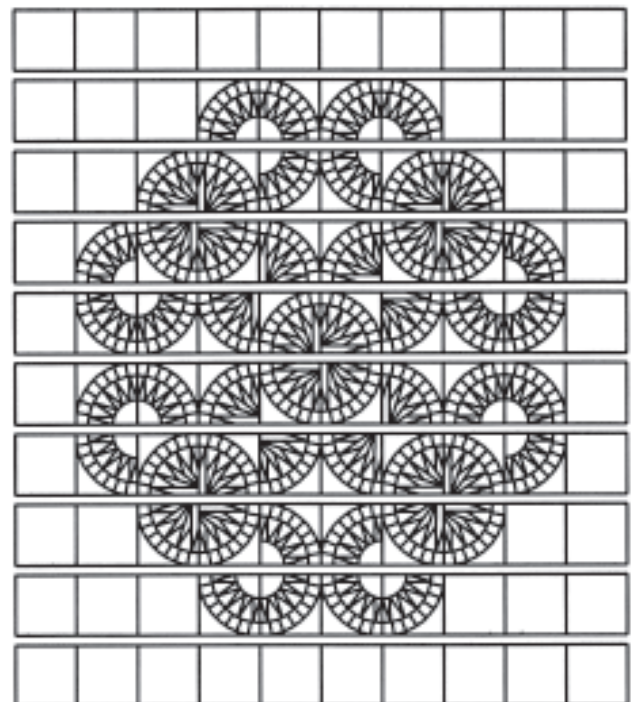
Assemble the Quilt Blocks

The Crown of Thorn blocks and the 6 3/4" background squares found in Bag #5 are used to piece the quilt top together.

Layout the Blocks: Layout the quilt as shown below. Double check the position of all your blocks and seams before you begin sewing. The seams should rest together in opposite directions when you pick the blocks up to sew.



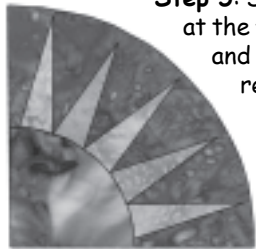
Assemble the Blocks: The blocks are assembled in rows as shown below. After the rows are completed steam press the seams for each row in one direction, alternating every other row so that when the rows are sewn together, the seam will rest side by side.



Step 3: Shape Unit A to match the edge of the melon and place the third pin along the last side, weaving it into the fabric along the edge as if you were sewing a basting stitch.



Step 4: Before you start sewing, position the two pieces at your machine. Place the melon on the bottom next to the feed dogs and Unit A on the top next to the pressor foot.



Step 5: Sew the two pieces together by starting at the first edge where you placed the first pin and sew a few stitches stopping before you reach the pin. Pull the pin out. This allows the fabric along the edge to relax. Continue sewing to the center pin. Pull the center pin out and continue sewing to the other edge. Remove the third pin just before you sew off the edge.

Note: That Purple Thing works great as a third finger to help hold the pieces together when sewing the curves. It can be used to smooth out any pleats you might sew into and is also used to hold the edges together.

Step 6: When you are done sewing, finger press the seams to one side but don't use any steam at this point.

Step 7: Repeat the same curved piecing process when sewing the C-Units onto the A and B Units. Pin the first side together, then find the center, pin, and continue to shape the two pieces together and sew.

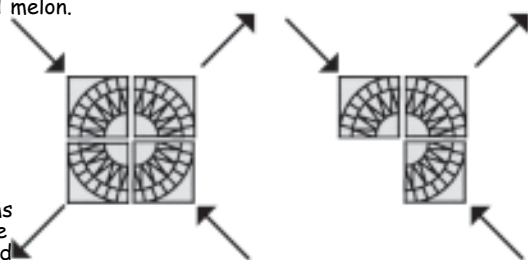


Pressing the Blocks

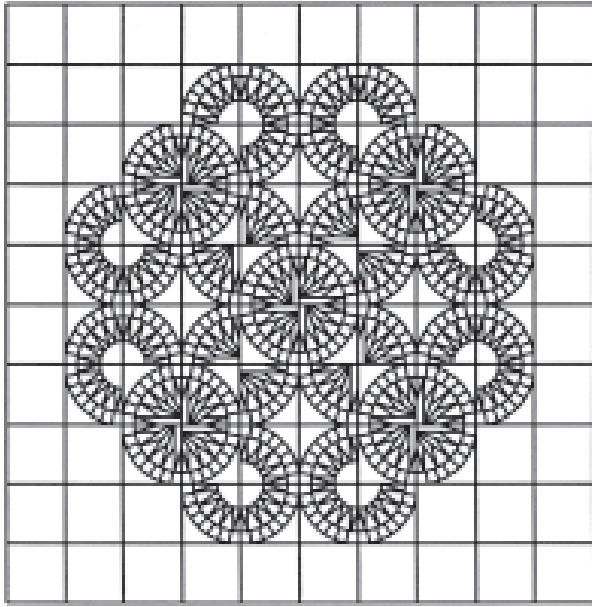
Steam press the curved seams in opposite directions on every other block.

Press seams toward melon.

Press seams toward the background center piece.



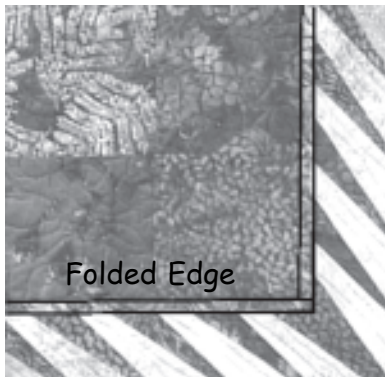
Assemble the Rows: Complete the center of the quilt by sewing the rows together as shown below. Press the seams for each row in one direction.



Border

Inner Folded Border: An inner border lip was sewn onto the center of the quilt before the pieced border was added. The strips for the inner borders were cut 1 1/4" wide. Join the strips together at a 45° angle. Press the long strips in half lengthwise and then cut the strips to fit the length and width of your quilt.

The two side borders are sewn onto the quilt first. The folded edge floats on the top of the quilt facing the center while the double unfinished edge is sewn along the edge of the quilt. Press the folded border flat to the quilt. The top and bottom strips are sewn next. These strips are also pressed so the folded edge faces the center of the quilt. The top and bottom borders overlap the side borders in all four corners.



Paper Piecing the D-Units: Bag #4:



Templates D1 and D2 were used to cut the pieces for Unit D. Separate the left and right units. Then separate the pieces cut for the D-Units into two piles. Stack the fabric pieces wrong

sides up in each pile. To figure out which fabric pieces are used for the left and right units, position the pieces wrong side up on the foundation papers. Match the pieces to the foundation paper with the wrongside of the fabric facing up.

The foundation piecing is done the same as the piecing for Units A and B. Glue the first piece on the backside of the foundation paper under sec. 1. Fold the paper back on Line 1 and trim the fabric with your add-a-quarter ruler. Place fabric #2 right side up under sec. 2 while the paper is still folded back. If you are unsure where to position the fabric for sec. 2 then fold on the dotted line next to Line 2 to find the shape. After the D-Units are completed, sew together the following sets.



Quilt size: 58" by 58" Make 4 set each: 2 left and 2 right.
 Quilt size: 70" by 70" Make 4 set each: 3 left and 3 right.
 Quilt size: 96" by 96" Make 4 set each: 4 left and 4 right.

Strip Piecing the Borders

These strips should be in Bag #4. Cut the strips on the fold at approximately 21". Trim a 45° angle off one end of each 2 1/4" by 21" strip. Eight strips are sewn together to build one strata. Arrange the strips to create a continuous flow from one color to the next. Sew the strips as shown in the graphics.

Size: 58" by 58": Make 4 sets total: Sew 2 each left and right sets.
 Size: 70" by 70": Make 4 sets total: Sew 2 each left and right sets.
 Size: 96" by 96": Make 6 sets total: Sew 3 each left and right side.

Sew with the right side of the fabric facing up



After the strata's are sewn, crosscut two 4 3/4" sections on each strata. The D-Units are also 4 3/4" wide.



Make four sets.



Make four sets.

