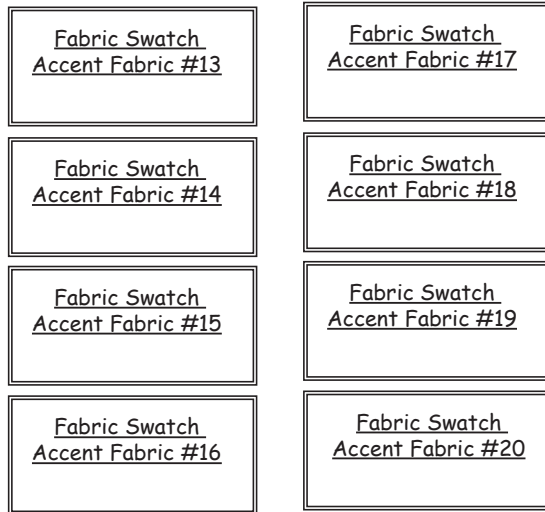


Cutting Information

Accent Fabrics, 13-20,

1: Cut (8) 6" squares from each of the (8) accent fabric. Separate the pieces by color. Place (6) squares from each color into Bag #2 with **Template CG-1**. Place the other (2) squares from each color into Bag #3.

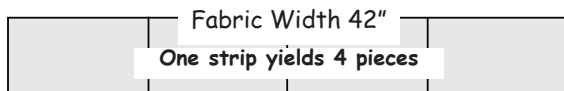


2: Choose (5) accent fabrics. Cut (8) 1-1/2" by 7-1/2" pieces from each of the (5) colors. Separate the pieces by color and place them into Bag #1.

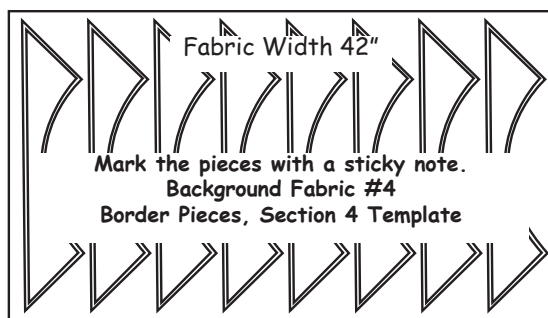


Background Fabric #4:

1: Cut (2) 5-3/4" by 42" strips. Sub-cut the strips into (8) 5-3/4" by 10-1/2" pieces. Place these pieces into Bag #1 with the **Unit-H, Template Layout Sheets**.



2: Cut (1) 24" by 42" strip. Use the **Glacier Star Section 4 Template** and cut (8) pieces. Place these pieces into Bag #4.



Background Fabric #5:

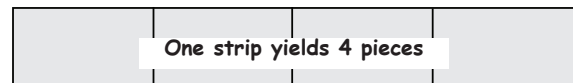
1: Cut (6) 7-1/2" by 42" strips. Sub-cut the strips into (24) 7-1/2" by 8-1/2" pieces. Clip these pieces together and place them into Bag #2 with the **Template CG-2, Layout Sheets**.



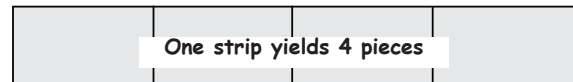
*2: Cut (2) 7-1/2" by 42" strips. Sub-cut the strips into (8) 7-1/2" by 8-1/2" pieces. Clip these pieces together and place them into Bag #3 with the ***Template CG-2, Mirror Layout Sheets**.



3: Cut (6) 7-1/2" by 42" strips. Sub-cut the strips into (24) 7-1/2" by 9-1/2" pieces. Clip these pieces together and place them into Bag #2 with the **Template CG-3, Layout Sheets**.



*4: Cut (2) 7-1/2" by 42" strips. Sub-cut the strips into (8) 7-1/2" by 9-1/2" pieces. Clip these pieces together and place them into Bag #3 with ***Template CG-3, Mirror Layout Sheets**.



Accent Fabric #11:

1: Cut (2) 24" by 42" strips. Use the **Glacier Star Section 4 Template** and cut (8) pieces. Place these pieces into Bag #5.



2: Use the **Glacier Star Section 6 Template** and cut (16) pieces from the remaining fabric. Place these pieces into Bag #4.

